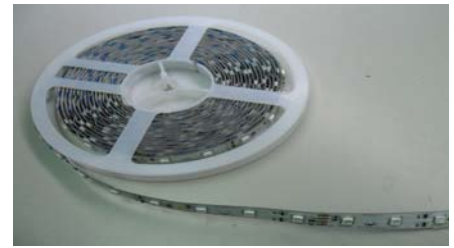


**RGB FLEXSTRIP LIGHT****BVM-SFRGBC05****DESCRIPTION**

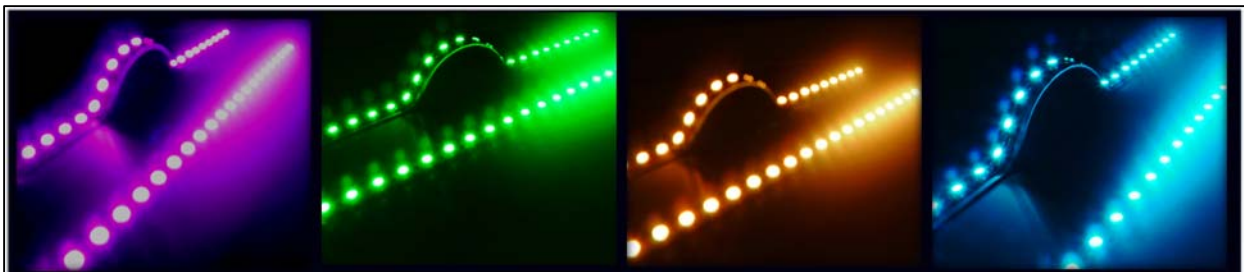
- Strip light is made of high brightness SMD LEDs mounted on rigid printed circuit (PCB). White lights with red, green and blue LED integrated are available for various applications.
- Bright View provides full color spectrum controller, please refer to the specifications of BVM-FSCC .
- Bright View also provides connectors

**FEATURES**

- Number of SMD LEDs : 250 pcs of ultra bright RGB SMD LED
- Product size (LxWXH) : 6300mm x 12.9mm x 2.7mm (with adhesive-tape back)
- Shortest unit is 150mm with 6 LEDs.
- Easy installation with connector
- Continuous length flexible LED light strips
- Low power consumption and high optical intensity
- Runs on DC 24 volt power supply
- Lead (Pb) free, and RoHS compliant

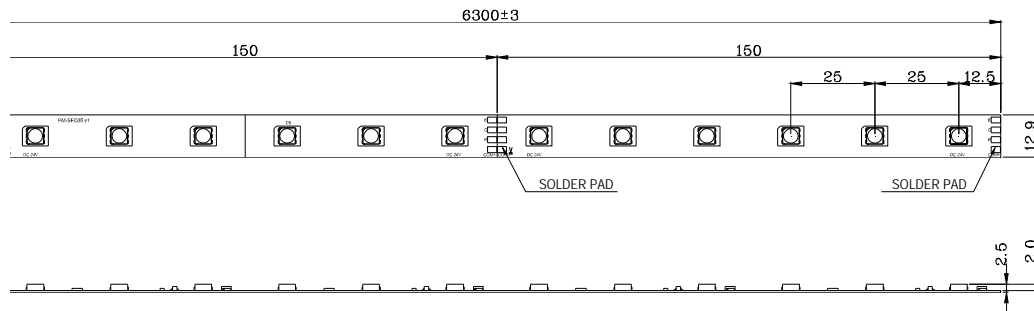
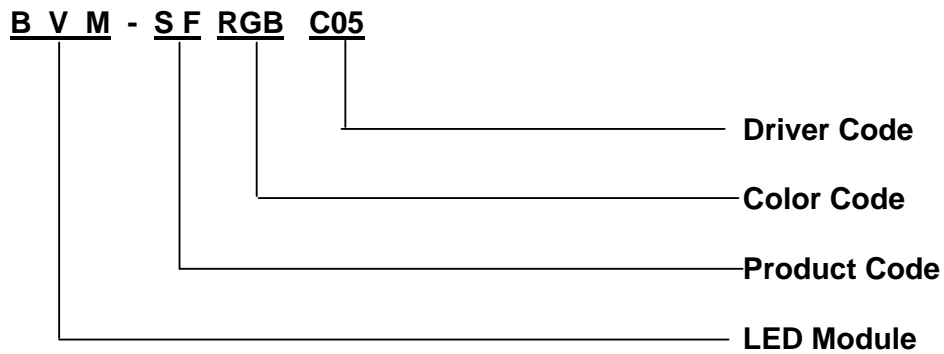
**APPLICATIONS**

- Decorative & Entertainment Lighting
- Tube Light Source & LED Strip Light
- Architectural Lighting
- General Lighting



**■ PRODUCT DIMENSIONS**

Unit : mm

**■ PART NUMBERING SYSTEM**

**■ ABSOLUTE MAXIMUM RATINGS AT Ta = 25 °C**

PARAMETER	Max.	Unit
Max. Operating Voltage	25	V
Electrostatic Discharge (Contact Model)	±2000	V
Power Dissipation/Unit	1.625	W
Power Dissipation/Reel	68.25	W
Operating Temperature Range	-30 ~ +50	°C
Storage Temperature Range	-30 ~ +85	°C

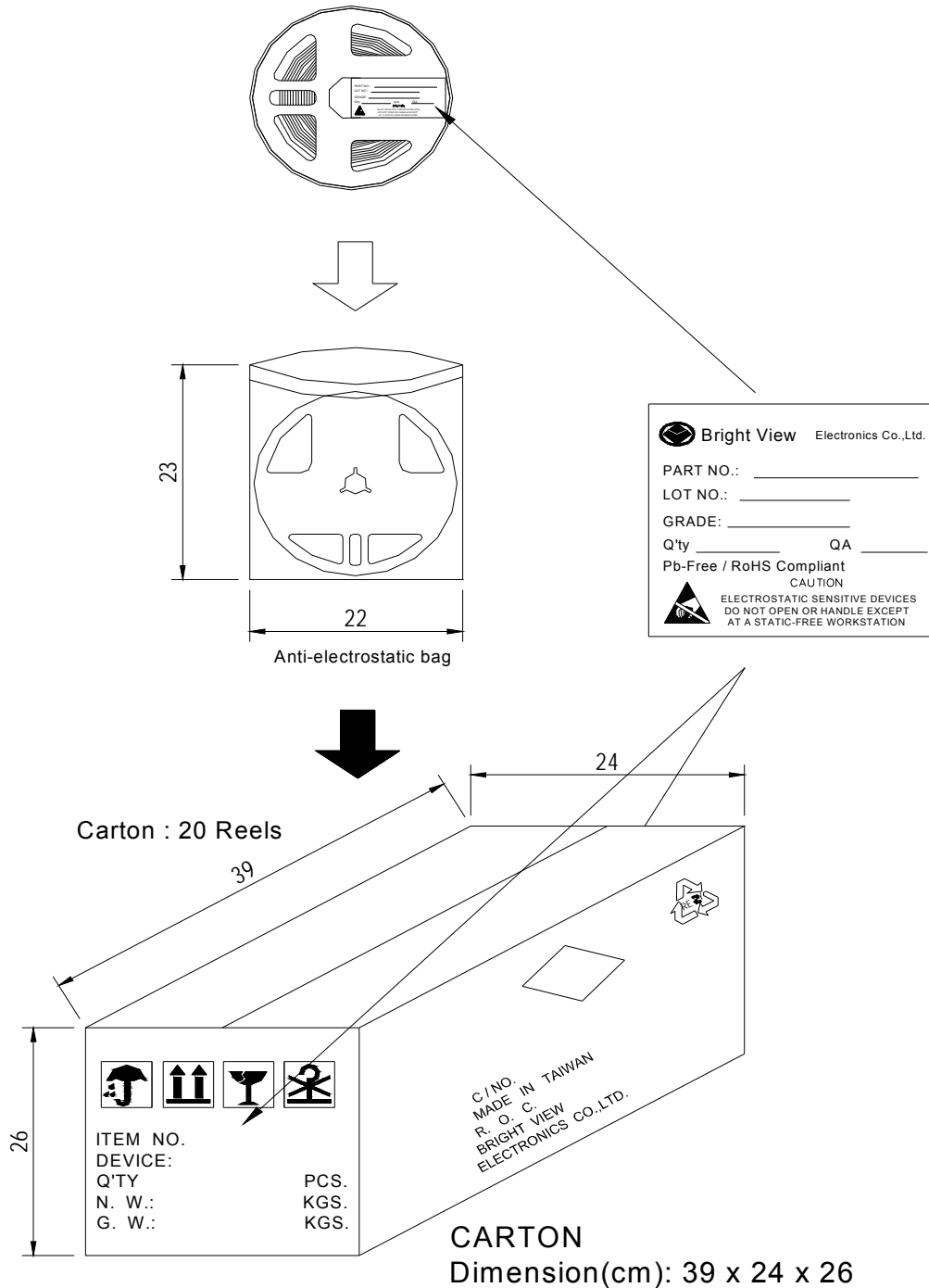
\*The operating temperature measured position is on the back of the FPC.

**■ TYPICAL ELECTRICAL / OPTICAL CHARACTERISTICS AT LED If = 20mA Ta = 25°C**

SYMBOL	PARAMETER	BVM-SF25FC2S			Unit
		Red	Green	Blue	
	Light Color	Red	Green	Blue	
V	Operating Voltage (length<= 3150mm)	24			V
$\lambda_p$	Peak Emission Wavelength	635	518	465	nm
$\lambda_d$	Dominant Wavelength	625	525	470	nm
2 $\theta$ 1/2	LED Viewing Angle	120	120	120	deg.
I	Operating Current/Unit (typ.)	21	21	21	mA
I	Operating Current/Reel	0.91	0.91	0.91	A
$\Phi$	Luminous Flux/Unit	8.0	10.0	6.0	lm
$\Phi$	Luminous Flux/Reel	640	800	480	lm

■ **PACKING**

Unit : cm



**■ CAUTIONS****1. Over voltage**

- A. Drive the product over the specified voltage rating (25VDC) per unit or per strip will damage the product.
- B. The product should not be used in reverse polarity.
- C. It is recommended to use a power supply with overload (over-voltage, short circuit and overheat) protection.

**2. Hand soldering**

- A. It is recommended to use a tip temperature of 280 °C for less than 3 seconds (one times) with a soldering iron capacity of 30W, if hand soldering of the connecting wire is required.
- B. Be careful of the contaminations of hand soldering.

**3. Storage & Handling**

- A. Open the anti-electrostatic bag only a short time before use.
- B. LED is encapsulated with elastic resin and will be damaged with a external force applied on the top surface of the LED.
- C. The product should be storage in an environment with the relative humidity less than 90% RH (@30 degree C or less).
- D. During installation, excess mechanical stress will damage the product. The minimum bending radius of curvature is 5000mm. The maximum twist angle is 1 degree.
- E. The product is not waterproof. Excess moisture may also damage the product.