



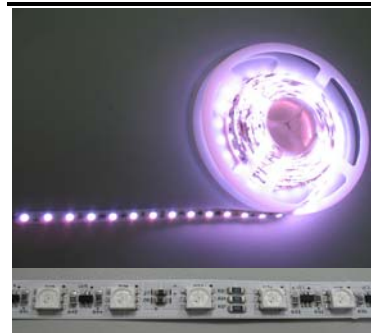
## Bright View Electronics

### RGB LED STRIP LIGHT

### BVM-SFRGB5C01 series

#### ■ DESCRIPTION

- Strip light is made of high brightness SMD LEDs mounted on rigid printed circuit (PCB). White lights with red, green and blue LED integrated are available for various applications.
- Bright View provides full color spectrum controller, please refer to the specifications of BVM-FSCC .
- Bright View also provides connectors



#### ■ FEATURES

- Number of SMD LEDs : 198 pcs of ultra bright RGB SMD LEDs
- Product size (LxWXH) : 3050mm x 9.5mm x 3.2mm (without connector)
- Easy installation with connector
- Drive: 24VDC/18mA
- Shortest unit is 169mm with 11 LEDs.
- Low power consumption and high optical intensity
- Lead (Pb) free, and RoHS compliant

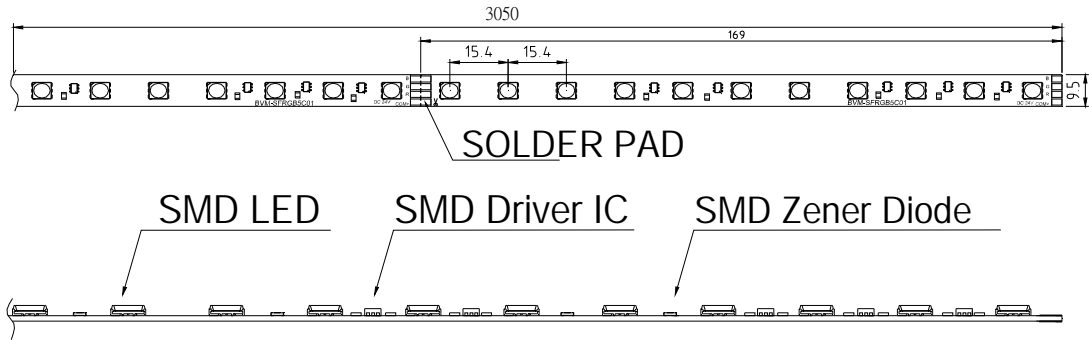
#### ■ APPLICATIONS

- Decorative & Entertainment Lighting
- Tube Light Source & LED Strip Light
- Architectural Lighting
- General Lighting

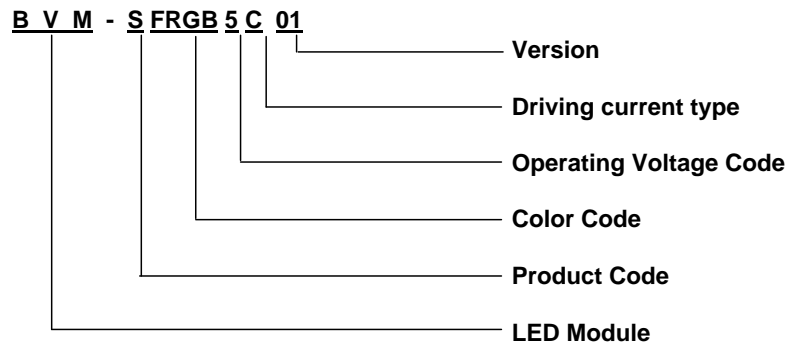


■ **PRODUCT DIMENSIONS**

Unit : mm



■ **PART NUMBERING SYSTEM**



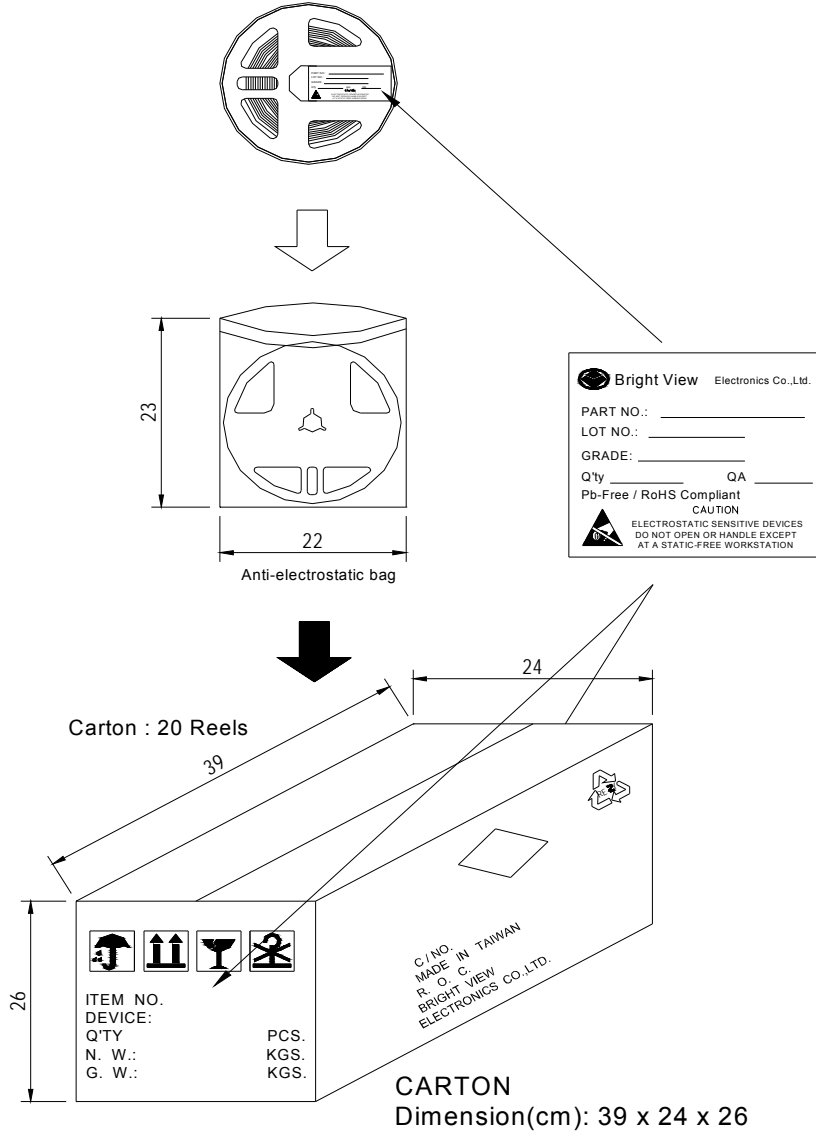
**■ ABSOLUTE MAXIMUM RATINGS AT Ta = 25 °C**

PARAMETER	MAX	UNIT
Power Dissipation	48.8	W
Operating Voltage (maximum)	25	V
Electrostatic Discharge (Contact Mode)	±2000	V
Operating Temperature Range	-30 ~ +50	°C
Storage Temperature Range	-30 ~ +85	°C

**■ TYPICAL ELECTRICAL / OPTICAL CHARACTERISTICS AT Ta = 25 °C**

SYMBOL	PARAMETER	BVM-SFRGB5C01			Unit
		Red	Green	Blue	
	Light Color	Red	Green	Blue	
V	Operating Voltage (length<= 3000mm)	24			V
$\lambda_p$	Peak Emission Wavelength	633	520	462	nm
$\lambda_d$	Dominant Wavelength	625	525	465	nm
2 $\theta$ 1/2	LED Viewing Angle	120	120	120	deg.
I	Operating Current/Unit (typ.)	36	36	36	mA
I	Operating Current/Reel	0.36	0.65	0.65	A
$\Phi$	Illuminance /Unit	45	80	7	lx
$\Phi$	Luminous Flux/Unit	29	35	22	lm

■ **PACKING**      Unit : cm





### ■ CAUTIONS

#### 1. Over voltage

- A. Drive the product over the specified voltage rating (25VDC) per unit or per strip will damage the product.
- B. The product should not be used in reverse polarity.
- C. It is recommended to use a power supply with overload (over-voltage, short circuit and overheat) protection.

#### 2. Hand soldering

- A. It is recommended to use a tip temperature of 280 °C for less than 3 seconds (one times) with a soldering iron capacity of 30W, if hand soldering of the connecting wire is required.
- B. Be careful of the contaminations of hand soldering.

#### 3. Storage & Handling

- A. Open the anti-electrostatic bag only a short time before use.
- B. LED is encapsulated with elastic resin and will be damaged with a external force applied on the top surface of the LED.
- C. The product should be storage in an environment with the relative humidity less than 90% RH (@30 degree C or less).
- D. During installation, excess mechanical stress will damage the product. The minimum bending radius of curvature is 5000mm. The maximum twist angle is 1 degree.
- E. The product is not waterproof. Excess moisture may also damage the product.