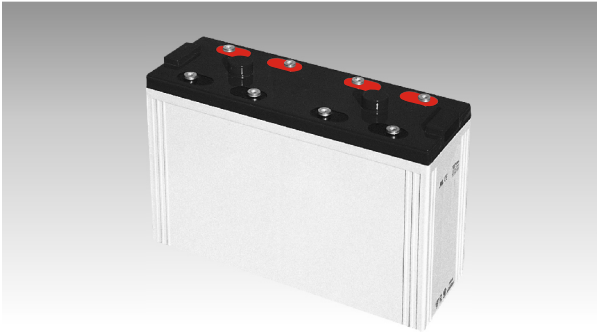
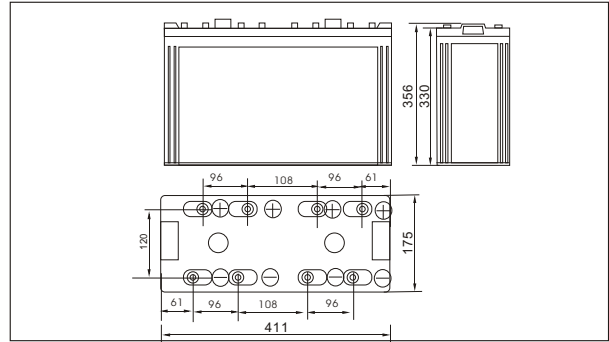




# Sw27000(2V700AH)



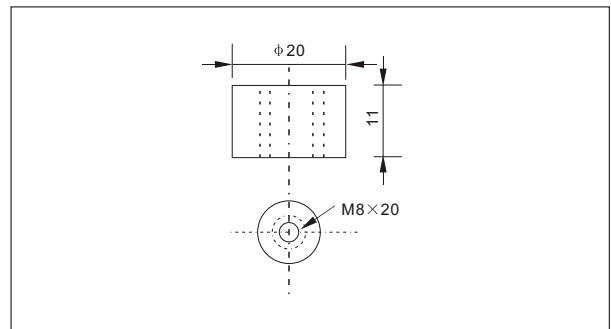
### ● Outer dimensions (mm)



### ● Specifications

Nominal Voltage		2 V
Rated capacity (10 hour rate)		700 Ah
Dimensions	Total Height	356 mm (14.0 inches)
	Height	330 mm (13.0 inches)
	Length	411 mm (16.1 inches)
	Width	175 mm (6.89 inches)
Weight Approx		48.5 Kg (102.3lbs)

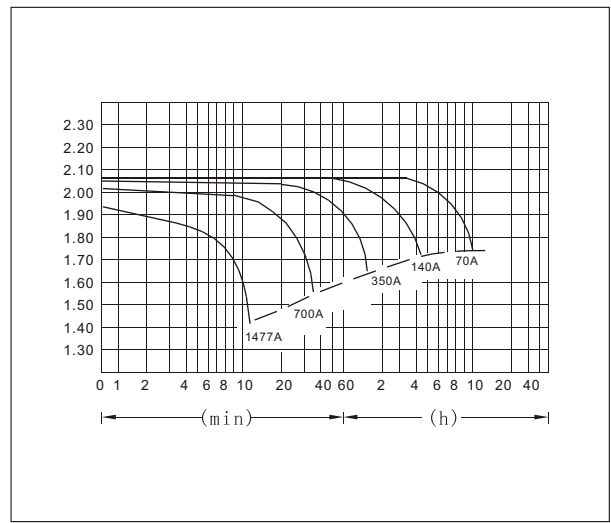
### ● Terminal Type (mm)



### ● Characteristics

Capacity 25°C(77°F)	10 hour rate(70.0 A) 5 hour rate(112A) 1 hour rate(420 A)	700 AH 560 AH 420 AH
Internal Resistance	Full charged Battery at 25°C(77°F)	Approx 0.26 mΩ
Capacity affected by Temperature (10hour rate)	40°C(104°F) 25°C(77°F) 0°C(32°F) -15°C(5°F)	102% 100% 85% 65%
Self-Discharge at 25°C(77°F)	Capacity after 3 month storage Capacity after 6 month storage Capacity after 12 month storage	91% 82% 64%
Terminal	T20	
Charge (constant Voltage)	Cycle	Initial Charging Current less than 280 A Voltage 2.35-2.40V
	Float	Voltage 2.25-2.30V

### ● Discharge Curves 25°C(77°F)



### Constant Current(Amp) and Constant Power(Watt) Discharge Table at 25°C(77°F)

Time		5min	10min	15min	30min	1h	2h	3h	4h	5h	8h	10h	20h
1.60V	A	2242	1477	1191	798	420	245	180	140	116	82	74	40
	W	3856	2629	2128	1430	756	448	334	263	219	156	141	77
1.70V	A	2171	1333	1121	763	395	234	175	137	113	80	72	39
	W	3865	2480	2091	1428	744	449	338	265	220	156	141	75
1.75V	A	2101	1192	981	714	382	228	171	134	112	79	71	39
	W	3823	2260	1865	1369	738	441	332	262	219	155	139	76
1.80V	A	2024	1124	911	658	370	223	167	132	109	77	70	38
	W	3786	2159	1750	1271	717	435	327	260	215	152	139	75
1.85V	A	1957	1053	841	588	357	217	161	129	106	75	67	36
	W	3698	2032	1632	1147	700	427	319	256	212	150	134	72