

Features

- Frequency Range: 20~1000MHz
- Active Bias Design Supply Temperature Compensation
- Standard Hermetic Package
- Operating Temperature Range: -55°C ~ +85°C

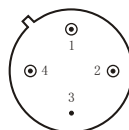
Specifications (50 Ω, V_{CC} = +15V, T_A = -55°C ~ +85°C)

Parameter	Symbol	Unit	Guaranteed	Typical
Frequency Range	f _L ~f _H	MHz	20~1000	20~1000
Gain	G _p	dB	≥12.0	12.5
Gain Flatness	ΔG _p	dB	≤1.0	0.8
Noise Figure	F _n	dB	≤4.5 Δ	3.8
Input VSWR	VSWR _i	—	≤2.0:1	1.8:1
Output VSWR	VSWR _o	—	≤2.0:1	1.8:1
Output Power @ 1dB Compression	P ₋₁	dBm	≥17.0 * Δ	—
DC Current	I _{CC}	mA	—	60

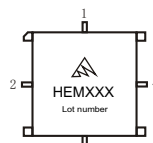
- 1) “*”f = 700MHz; “Δ” T_A = 24 ± 1°C;
- 2) The G_p and P₋₁ will be reduced 0.3dB and 2dB respectively under operating at 12VDC (I_{CC} = 48mA Typ).

Maximum Rating

DC Voltage : +17VDC
RF Input: +10dBm
Storage Temp: +125°C



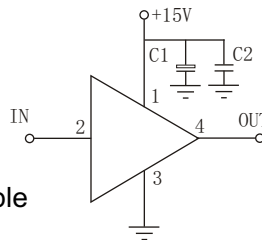
TO-8C



SMO-8C

Application Notes

1. Typical application shown as right, C₁ = 3.3~22 μF; C₂ = 3300~6800pF;
2. See assembly section for mounting information
3. Connectorized package (SMA-1) available
4. Pay attention to heat dispersion.



Typical Curves

