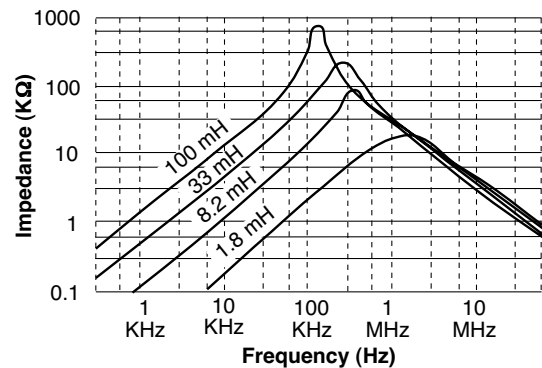


- Used as AC Power Line Filters in CTV, VTR, Audios, PC's, Facsimilies and Power Supply Applications
- UL940-V Recognized Materials
- Temperature Rise : 45°C Max.
- UL1446 Insulating System
- 2000 Vrms Isolation

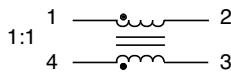
Electrical Parameters @ 25° C

Part Number	Inductance (mH Min.) [Pins 1-2, 4-3]	Current Rating (A rms Max.)
EPZ3047F-102	1.0	2.2
EPZ3047F-122	1.2	2.0
EPZ3047F-152	1.5	1.8
EPZ3047F-202	2.0	1.6
EPZ3047F-252	2.5	1.4
EPZ3047F-352	3.5	1.2
EPZ3047F-502	5.0	1.0
EPZ3047F-602	6.0	0.9
EPZ3047F-802	8.0	0.8
EPZ3047F-103	10	0.7
EPZ3047F-143	14	0.6
EPZ3047F-203	20	0.5
EPZ3047F-303	30	0.4
EPZ3047F-503	50	0.3

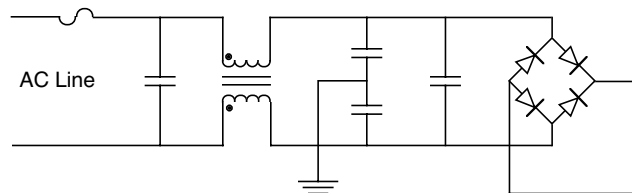
Impedance Characteristics



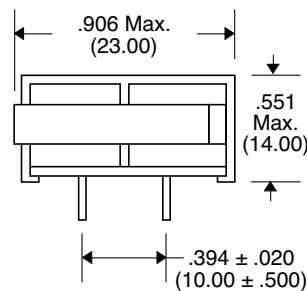
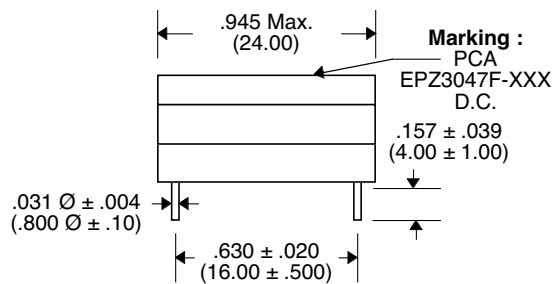
Schematic



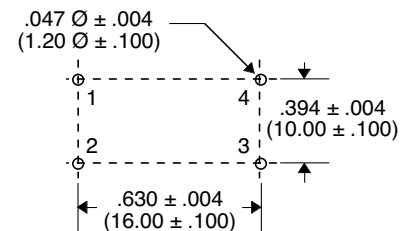
Circuit Sample



Package



Recommended PWB Piercing Plan



Unless Otherwise Specified Dimensions are in Inches /mm ± .010 /.25