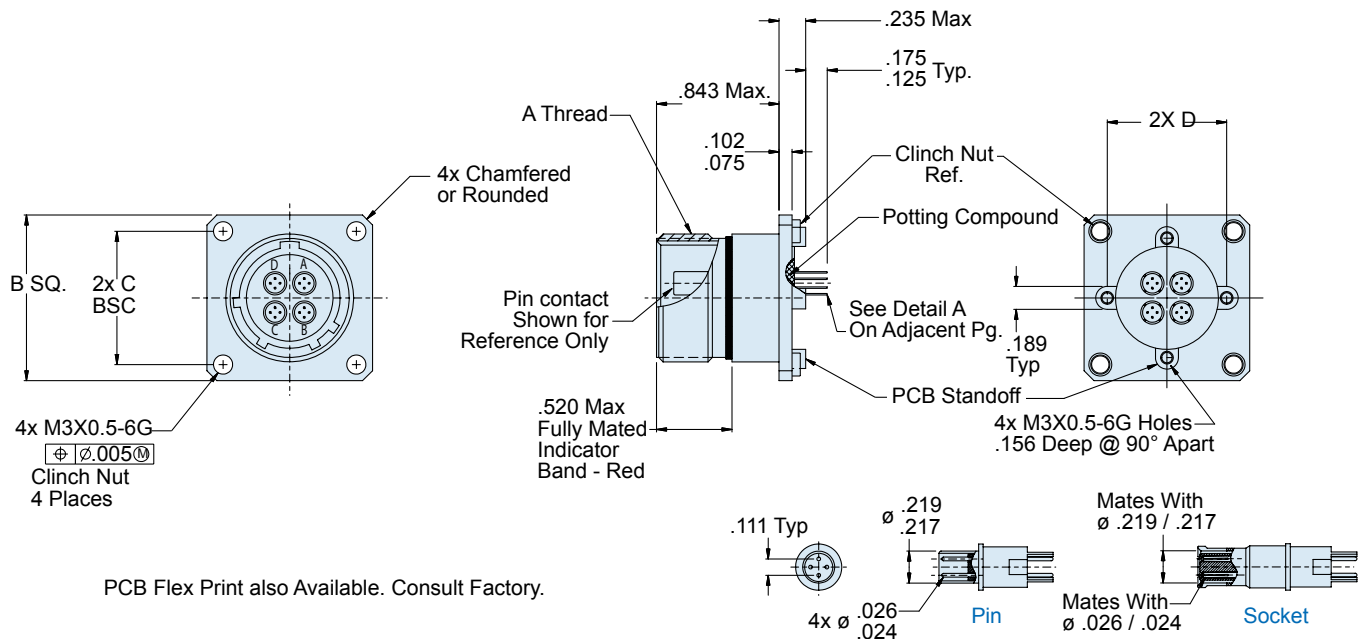
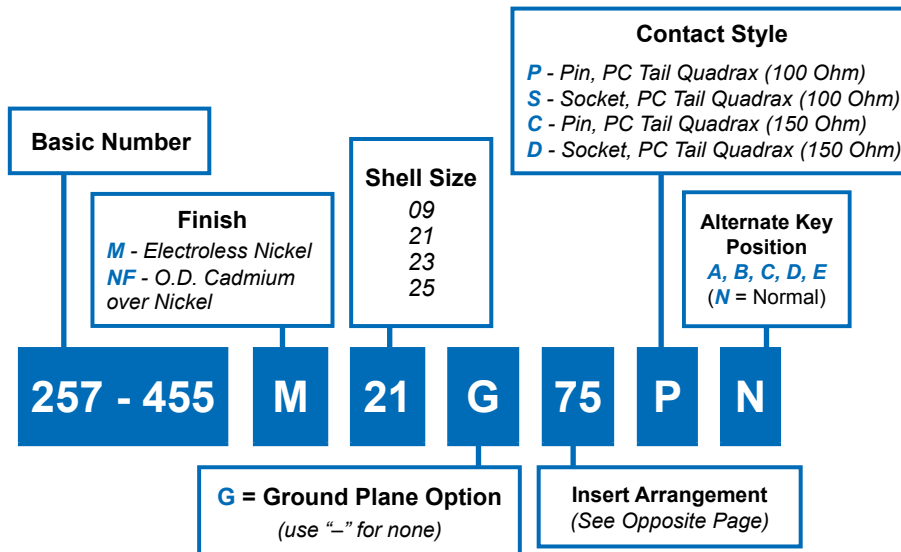




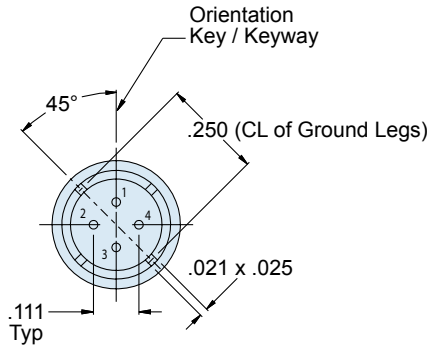
257-455 Box Mount Quadrax Connector With PC Tails • MIL-DTL-38999 Series III Type



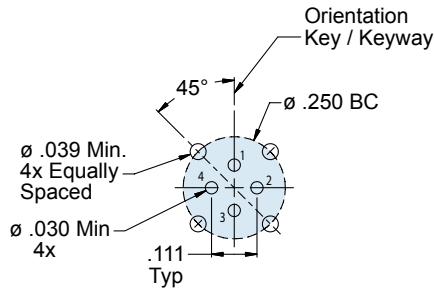
APPLICATION NOTES

- | | |
|---|--|
| <ol style="list-style-type: none"> 1. Assembly identified with Glenair's, part number and date code 2. Insert arrangements IAW MIL-STD-1560 and Figure I 3. Glenair 257-455 receptacle connector is designed to mate with any QPL manufacturers MIL-C-38999 series III plug connector having the same insert arrangement, polarization and the same quadrax interface dimensions shown. 4. PC contacts supplied with connector (installed) and are not sold separately. | <ol style="list-style-type: none"> 5. Material/finish:
Shell assembly, jam nut, lock ring—Al alloy/see Table II
Contacts—copper alloy/gold plate
Bayonet pins—CRES/passivate
O-rings, interfacial & peripheral seals—silicone/N.A.
Insulators—high grade rigid dielectric/ N.A. 6. Metric Dimensions (mm) are indicated in parentheses |
|---|--|

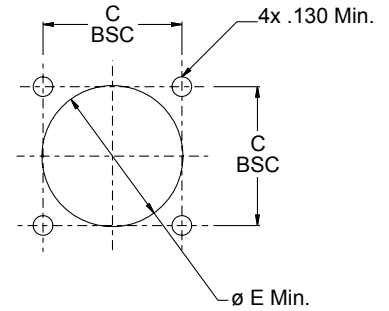
257-455
Box Mount Quadrax Connector
With PC Tails • MIL-DTL-38999 Series III Type



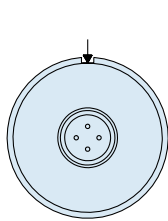
Rear View of Differential Quadrax



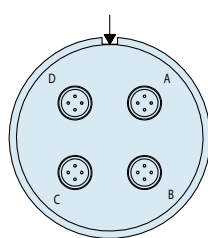
Recommended PCB Layout



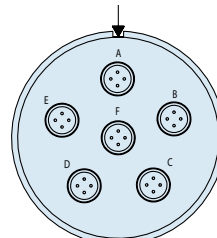
Back Panel Mounting



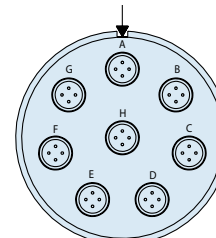
Arrangement 09-5



Arrangement 21-75



Arrangement 23-06



Arrangement 25-08

See Quadrax Contact Information on D-24

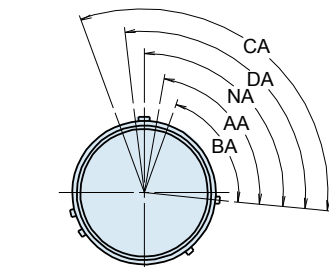


Figure 1
 Master Keyway Position
 Face View Shown
 Insert Arrangement Does
 Not Rotate With Master Keyway

TABLE I					
Shell Size	A Thread	B Sq.	C Bsc.	D Bsc.	ø E Min.
09	.6250-.1P-.3L-TS-2A	1.031 1.007	.719	.594	.656
21	1.3750-.1P-.3L-TS-2A	1.575 1.545	1.250	1.221	1.421
23	1.5000-.1P-.3L-TS-2A	1.701 1.677	1.375	1.360	1.546
25	1.6250-.1P-.3L-TS-2A	1.823 1.799	1.500	1.475	1.672

