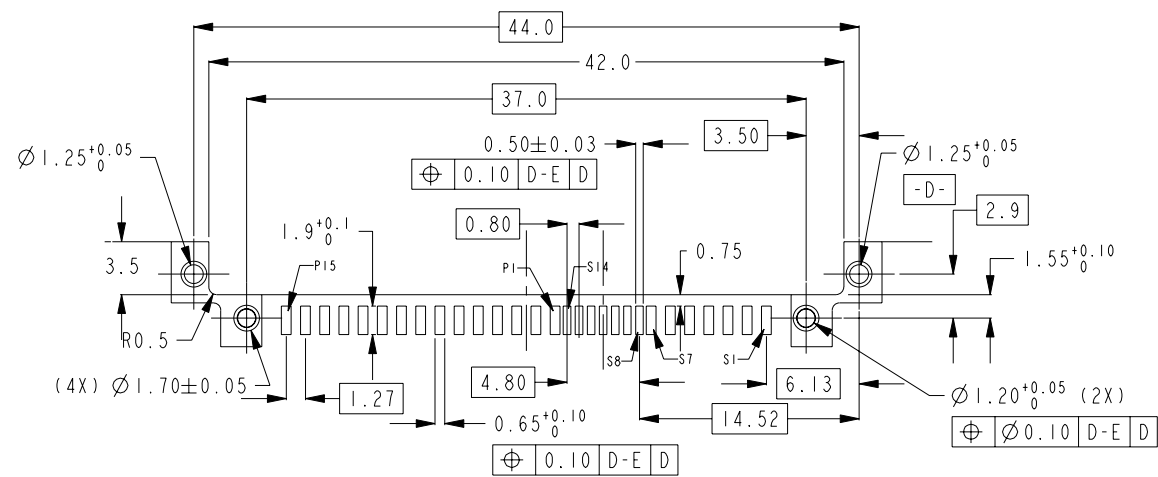
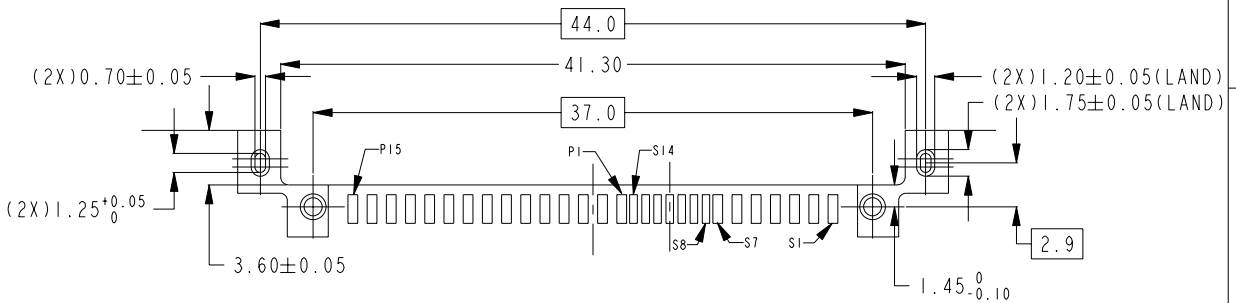


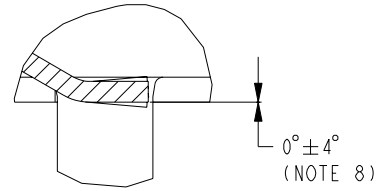
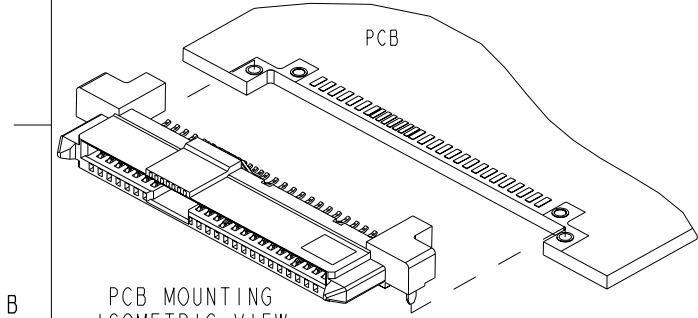
| PRODUCT NO.      | PACKAGING   |
|------------------|-------------|
| 10036587-001LF   | TRAY        |
| 10036587-001TRLF | TAPE & REEL |
| 10036587-002LF   | TRAY        |
| 10036587-002TRLF | TAPE & REEL |
| 10036587-003LF   | TRAY        |



**RECOMMENDED PCB LAYOUT**  
 RECOMMENDED PCB T: 1.6mm  
 TOLERANCE UNLESS OTHERWISE: ±0.1



**ALTERNATIVE PCB LAYOUT**  
 REFER TO ABOVE RECOMMENDED PCB LAYOUT FOR UNSPECIFIED DIMENSIONS  
 RECOMMENDED PCB T: 1.6mm  
 TOLERANCE UNLESS OTHERWISE: ±0.1



**NOTES:-**

- MATERIAL:
  - HOUSING : HIGH TEMP. THERMOPLASTIC, 94V-0, COLOR: BLACK
  - TERMINAL : COPPER ALLOY
  - HOLD DOWN: COPPER ALLOY
- FINISH:
  - TERMINAL : 30u" Au PLATING (CONTACT POINT) OVER 50u" MIN NICKEL
  - SOLDER TAIL: 100u" MIN TIN OVER 50u" MIN NICKEL
  - HOLD DOWN : 100u" MIN TIN OVER 50u" MIN NICKEL
- PACKAGING:
  - 10036587-XXXLF : REFER TO STANDARD PACKAGING IN TRAY
  - 10036587-XXXTRLF: REFER TO TAPE AND REEL PACKAGING
- THE HOUSING WILL WITHSTAND EXPOSURE TO 260 DEGREES CELSIUS PEAK TEMPERATURE FOR 10 SECONDS IN A CONVECTION, INFRE-RED OR VAPOUR PHASE REFLOW OVEN
- THIS PRODUCT MEETS EUROPEAN UNION DIRECTIVES AND OTHER COUNTRY REGULATIONS AS DESCRIBED IN GS-22-008
- PART NUMBERS ENDING IN 'LF' MEANS FOR NOTE 5 LEAD FREE IDENTIFICATION, P/N XXXXXXXX-XXXLF IS EQUIVALENT TO PREVIOUS P/N XXXXXXXX-XXX
- ALL SOLDER TAIL TO BE WITHIN 0.10mm, MAX COPLANARITY.
- ALL SOLDER TAILS ANGLE CONTROL SHALL BE 0° ±4° AND APPLIED TO P/n 10036587-XXXLF.
- A SYMBOL BE NEXT TO ANY DIMENSION, VIEW, OR NOTE WHICH HAS) BEEN MODIFIED WITH THE CURRENT DRAWING REVISION.

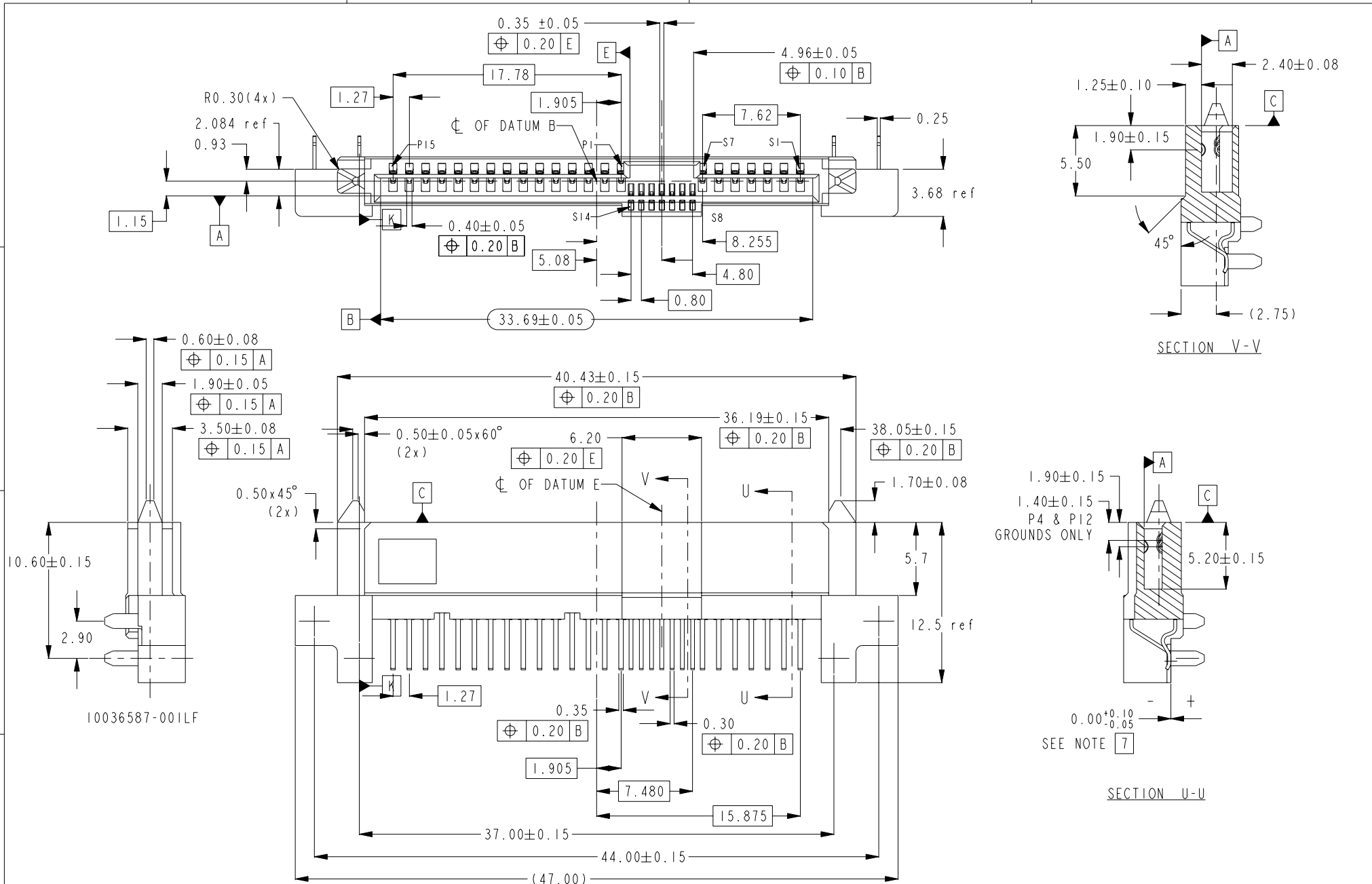


Copyright FCI.

|             |          |       |            |                       |                             |                  |                                       |              |
|-------------|----------|-------|------------|-----------------------|-----------------------------|------------------|---------------------------------------|--------------|
| www.fci.com |          |       |            | surface<br>ASME Y14.5 | tolerance std<br>ASME Y14.5 | projection<br>MM | TOLERANCES UNLESS OTHERWISE SPECIFIED |              |
| rev         | ecn no   | dr    | date       | Dr                    | JOYCE PEH                   | 2004-08-23       | ANGULAR                               | LINEAR       |
| J           | S08-0359 | BLLIM | 2008-10-31 | Eng                   | BL LIM                      | 2009-05-27       | 0.X                                   | ±0.25        |
| K           | S09-0177 | BLLIM | 2009-05-27 | Chr                   | BL LIM                      | 2009-05-27       | 0.XX                                  | ±0.2         |
| D           | S06-0010 | TEOCS | 2006-01-09 | Appr                  | JOEY NG                     | 2009-05-27       | 0° ±0.2°                              | ±            |
| E           | S06-0205 | JTAN  | 2006-06-13 | Product family        |                             | size             |                                       | A4           |
| F           | S07-0007 | TAY   | 2007-01-08 | Spec ref              |                             | Scale            |                                       | 2:1          |
| G           | S07-0159 | TAY   | 2007-05-11 | SAS RECEPTACLE        |                             | ECN              |                                       | S09-0177     |
| H           | S08-0136 | TAY   | 2008-05-06 | R/A SMT ASSY          |                             | CUSTOMER         |                                       | sheet 1 of 3 |
|             |          |       |            | dwg no                | 10036587                    |                  | Rev.                                  |              |
|             |          |       |            | catalog no            |                             |                  | K                                     |              |



Copyright FCI.



REV F - 2006-04-11



|   |  |              |
|---|--|--------------|
| <b>FCI</b><br>title<br>SAS RECEPTACLE<br>R/A SMT ASSY<br>catalog no | dwg no<br>10036587                                 | Rev.<br>K    |
|   | CUSTOMER   | sheet 2 of 3 |
|   | PDM: Rev:K STATUS:Released 4 Printed: Jan 29, 2010 |              |

1

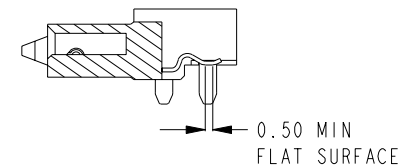
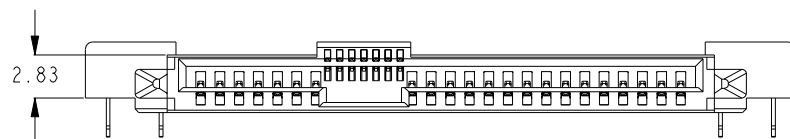
2

3

4

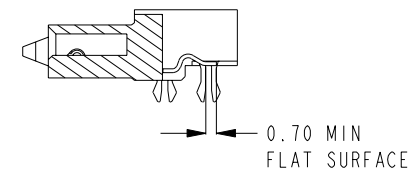
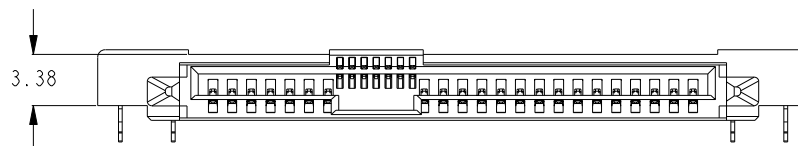
A

10036587-001LF



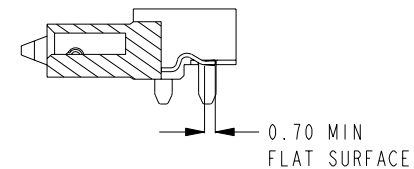
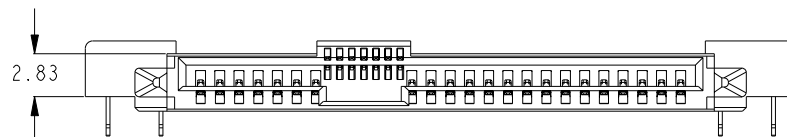
B

10036587-002LF



C

10036587-003LF



D

UNSPECIFIED DIMENSIONS PLEASE REFER TO PAGE 1 & 2

A

B

C

D



Copyright FCI.



title SAS RECEPTACLE  
R/A SMT ASSY  
catalog no

|          |          |              |   |
|----------|----------|--------------|---|
| dwg no   | 10036587 | Rev.         | K |
| CUSTOMER |          | sheet 3 of 3 |   |