

"High Frequency Ceramic Solutions"

Preliminary

2.45 GHz Band Pass Filter

P/N 2450BP15P0100

Detail Specification: 07/07/09

Page 1 of 2

General Specifications

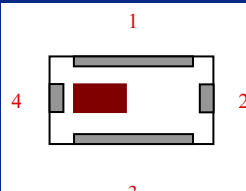
Part Number	2450BP15P0100
Frequency (MHz)	2400 - 2500
Insertion Loss	1.3 dB max.
Return Loss	9.5 dB min.
Attenuation (min.)	26 dB @ 3.4 - 3.6 GHz
Attenuation (min.)	20 dB @ 4.8 - 5.0 GHz

Impedance	50 Ω
Input Power	500 mW max.
Reel Quantity	4,000
Operating Temperature	-40 to +85°C
Storage Temperature	+5 to +35°C, Humidity 45-75%RH, 12 mos. max*

* - 1 yr shelf life in bag; 1 week shelf life out of bag;
Vacuum reseal unused reel

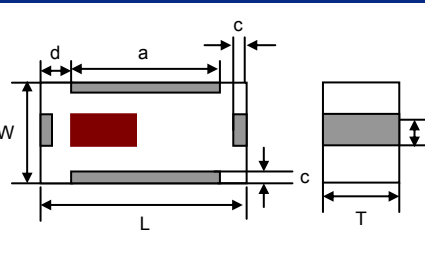
P/N Suffix	Packaging Style	Bulk	Suffix = S	Eg. 2450BP15P0100S
		T & R	Suffix = E	Eg. 2450BP15P0100E
	Termination Style	100% Tin	Suffix = None	Eg. 2450BP15P0100(E or S)
		Tin / Lead	Suffix = /Pb	Eg. 2450BP15P0100(E or S)/Pb

Terminal Configuration	
No.	Function
1	GND
2	OUT
3	GND
4	IN



Mechanical Dimensions

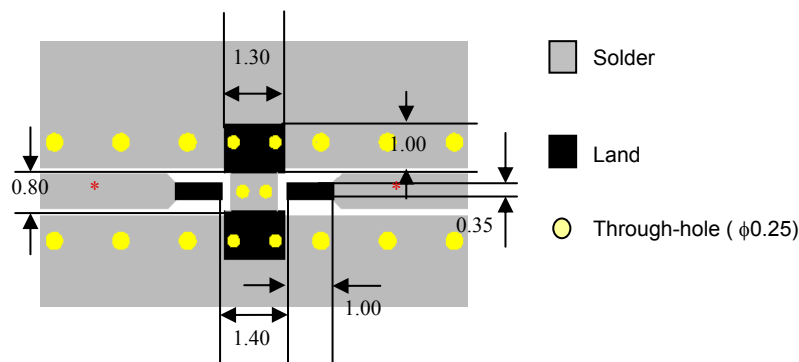
	In	mm
L	0.079 \pm 0.006	2.00 \pm 0.15
W	0.049 \pm 0.004	1.25 \pm 0.10
T	0.037 \pm 0.004	0.95 \pm 0.10
a	0.049 \pm 0.006	1.25 \pm 0.15
b	0.012 \pm 0.006	0.30 \pm 0.15
c	0.010 \pm 0.006	0.25 \pm 0.15
d	0.014 \pm 0.006	0.35 \pm 0.15



Mounting Considerations

Mount these devices with brown mark facing up.

* Line width should be designed to provide 50 ohm impedance, depending on PCB material and thickness



Units: mm

Johanson Technology, Inc. reserves the right to make design changes without notice.
All sales are subject to Johanson Technology, Inc. terms and conditions.



www.johansontechnology.com

4001 Calle Tecate • Camarillo, CA 93012 • TEL 805.389.1166 FAX 805.389.1821

2009 Johanson Technology, Inc. All Rights Reserved

"High Frequency Ceramic Solutions"

Preliminary

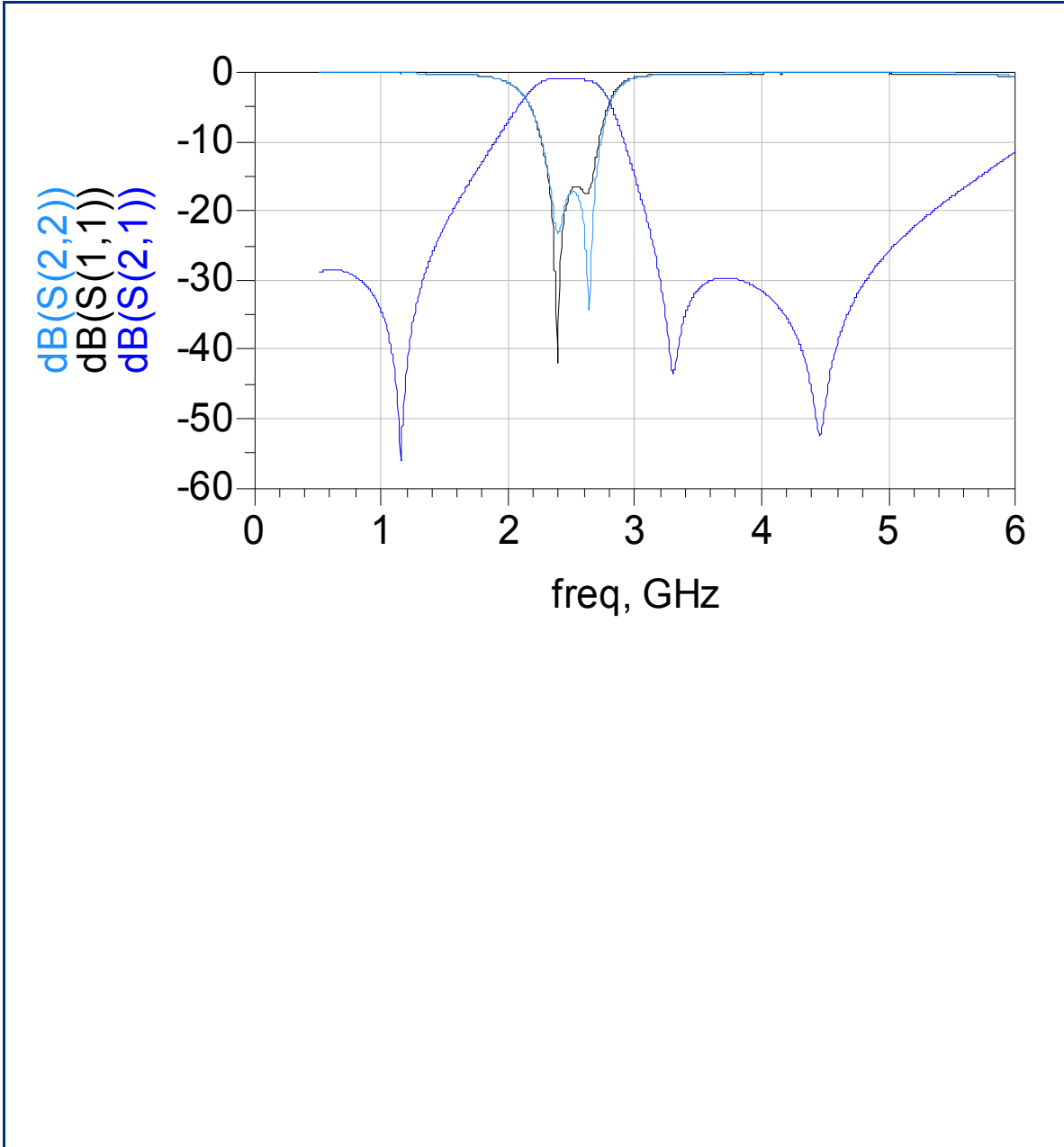
2.45 GHz Band Pass Filter

P/N 2450BP15P0100

Detail Specification: 07/07/09

Page 2 of 2

Typical Electrical Performance (T=25°C)



Johanson Technology, Inc. reserves the right to make design changes without notice.
All sales are subject to Johanson Technology, Inc. terms and conditions.



www.johansontechnology.com

4001 Calle Tecate • Camarillo, CA 93012 • TEL 805.389.1166 FAX 805.389.1821

2009 Johanson Technology, Inc. All Rights Reserved