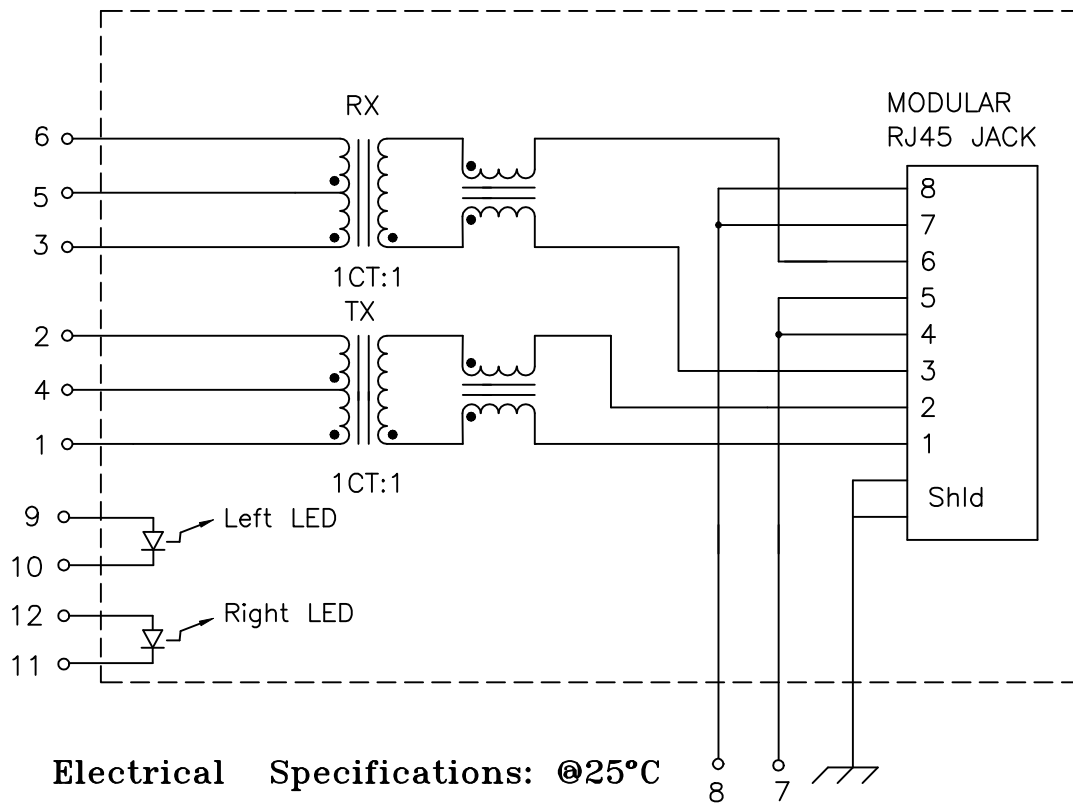


Schematic:



Electrical Specifications: @25°C

UTP Impedance: 100 OHMS

Turns Ratio: TX : 1CT:1 ($\pm 2\%$) RX : 1CT:1 ($\pm 2\%$)

Isolation Voltage: 1500 VAC (Input to Output)

UTP Side OCL: 350uH Minimum @100KHz, 100mV 8mADC

Insertion Loss (0.1MHz-100MHz): -1.0dB Maximum

Return Loss: 1MHz-30MHz 40MHz 50MHz 60MHz-80MHz
 -18dB Min -16dB Min -14dB Min

CMRR: 30MHz 60MHz 100MHz -12dB Min
 -35dB Min -30dB Min -25dB Min

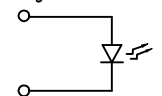
Crosstalk: 30MHz 60MHz 100MHz
 -50dB Min -40dB Min -35dB Min

Complete the Combo P/N as follows:

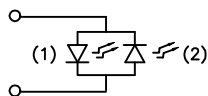
Replace 'x' & 'u' in the part number with one of the LED color letters:

Y=Yellow 'x' = Left LED Color
 G=Green 'u' = Right LED Color
 A=Amber
 R=Red
 N=Yellow(1)/Green(2) Bicolor
 M=Green(1)/Yellow(2) Bicolor

Single Color LED:



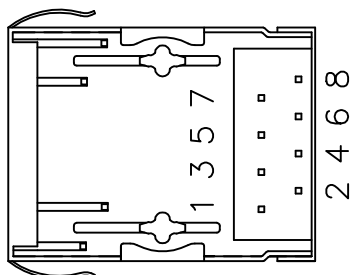
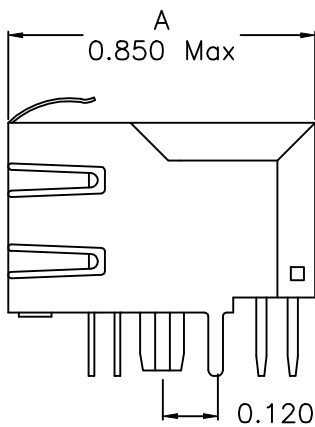
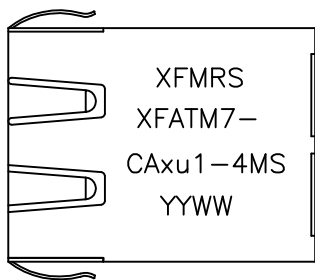
Bi-Color LED:



DOC. REV: A/1

XFMRs Inc.	Title: SINGLE PORT COMBO		
	UNLESS OTHERWISE SPECIFIED		P/N: XFATM7-CAXu1-4MS
TOLERANCES: .xxx ± 0.010		DWN.	廖玉坤 Sep-23-03
Dimensions in Inch		CHK.	李清儿 Sep-23-03
SHEET 1 OF 2		APP.	BW Sep-23-03

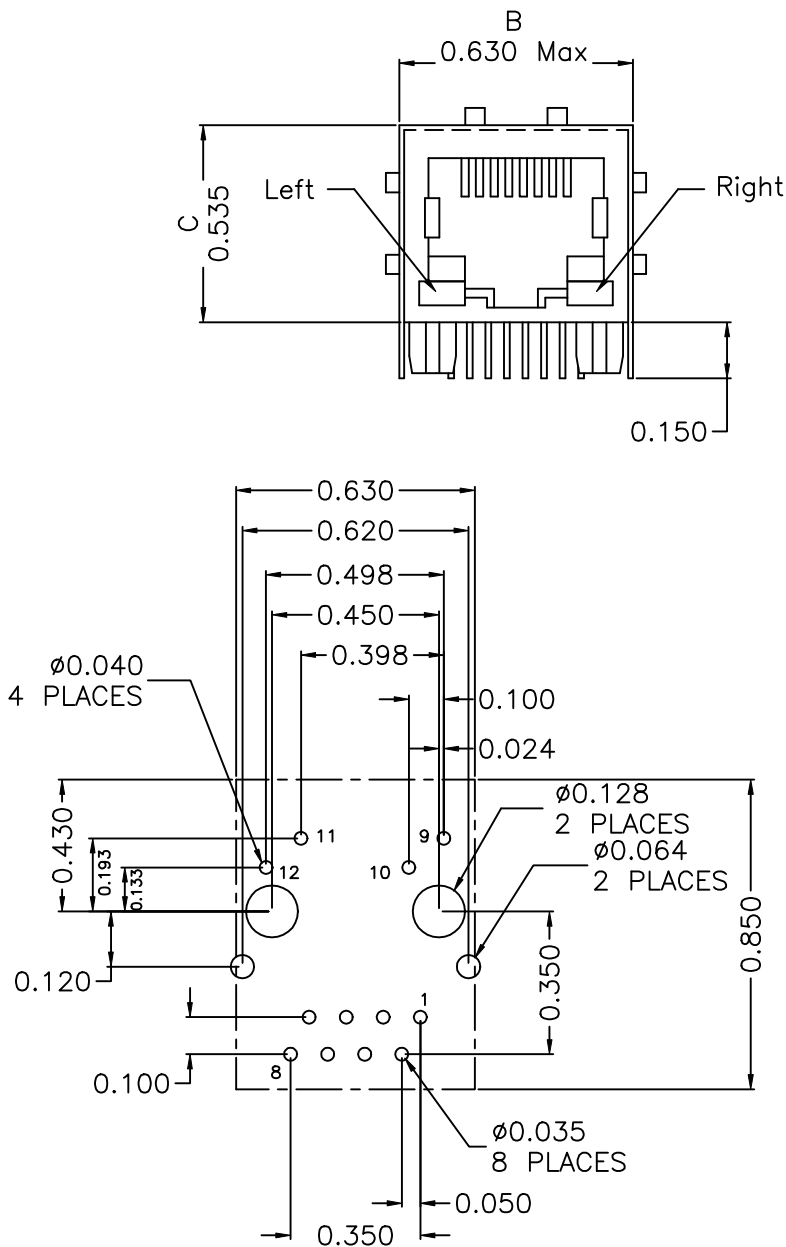
Mechanical Dimensions:



(BOTTOM VIEW)

Mounting Pattern:

(COMP SIDE)



XFMRS Inc.		Title: Mechanical Dimensions For CAxu1-4MS Series	
UNLESS OTHERWISE SPECIFIED TOLERANCES: .xxx ±0.010 Dimensions in Inch	P/N: XFATM7-CAxu1-4MS		REV. A
	DWN.	李小锋	Sep-23-03
	CHK.	廖玉坤	Sep-23-03
	APP.	BW	Sep-23-03
SHEET 2 OF 2			