



# TAI-SAW TECHNOLOGY CO., LTD.

No. 3, Industrial 2nd Rd., Ping-Chen Industrial District,  
Taoyuan, 324, Taiwan, R.O.C.

TEL: 886-3-4690038 FAX: 886-3-4697532

E-mail: [tstsales@mail.taisaw.com](mailto:tstsales@mail.taisaw.com) Web: [www.taisaw.com](http://www.taisaw.com)

## Approval Sheet For Product Specification

Issued Date:

Product Name: SAW Resonator 868.35 MHz SMD5X5

TST Parts No.: TD0110A

Customer Parts No.: \_\_\_\_\_

Company: _____
Division: _____
Approved by : _____
Date: _____

Checked by: Vincent Liu

Approval by: Francis Chen

Date: 2003/12/08



# TAI-SAW TECHNOLOGY CO., LTD.

No. 3, Industrial 2nd Rd., Ping-Chen Industrial District,  
Taoyuan, 324, Taiwan, R.O.C.

TEL: 886-3-4690038 FAX: 886-3-4697532

E-mail: [tstsales@mail.taisaw.com](mailto:tstsales@mail.taisaw.com) Web: [www.taisaw.com](http://www.taisaw.com)

## SAW Resonator 868.35 MHz

MODEL NO.: TD0110A

REV. NO.:2

### A. FEATURES:

1. 2-Port Resonator.

### B. MAXIMUM RATING:

1. Input Power Level: 0 dBm
2. DC voltage: 12 V
3. Operating Temperature: -40°C to +85°C
4. Storage Temperature: -40°C to +85°C

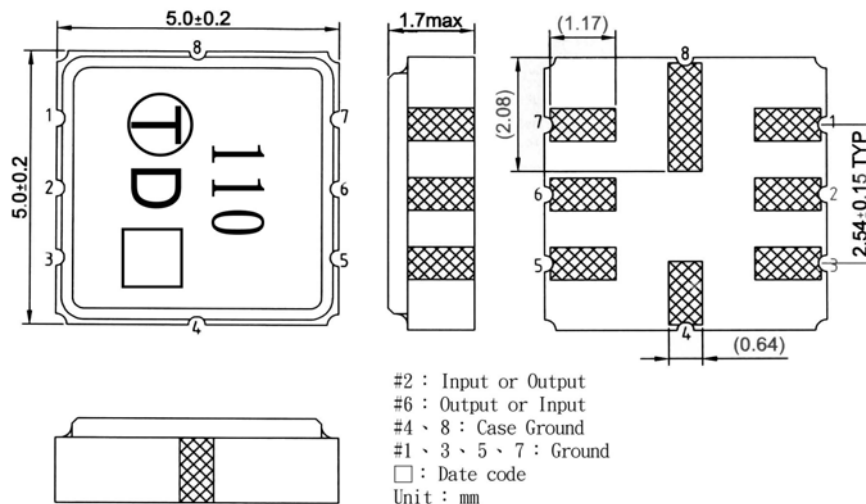
### C. ELECTRICAL CHARACTERISTICS:

Reference Temperature  $T_A=25^\circ\text{C}$

Characteristic	Units	Minimum	Typical	Maximum
Center frequency $f_c$	<b>MHz</b>	868.250	868.350	868.450
Insertion Loss $IL$	<b>dB</b>	-	6.7	9
Unload quality factor $Q_U$		4000	4900	-
Ageing of $f_c$	<b>ppm/yr</b>	-	-	$\pm 10$
Motional capacitance $C1$	<b>fF</b>	-	0.334	-
Motional inductance $L1$	<b><math>\mu\text{H}</math></b>	-	101.1	-
Motional resistance $R1$	<b>Ohm</b>	-	112.4	-
Parallel capacitance $C_o$	<b>pF</b>	-	1.6	-
Frequency Temperature coefficient ( $TC_f$ )	<b>ppm/c*2</b>	-	0.032	-
Turnover $T_o$	<b>deg.C</b>	10	25	40
Package size		SMD5X5		

Temperature dependence of  $f_c$ :  $f_c(T_A)=f_c(T_O)(1+TC_f(T_A-T_O)^2)$

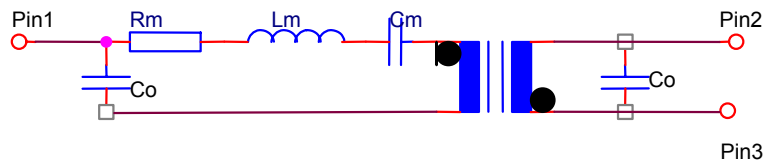
### D. OUTLINE DRAWING:



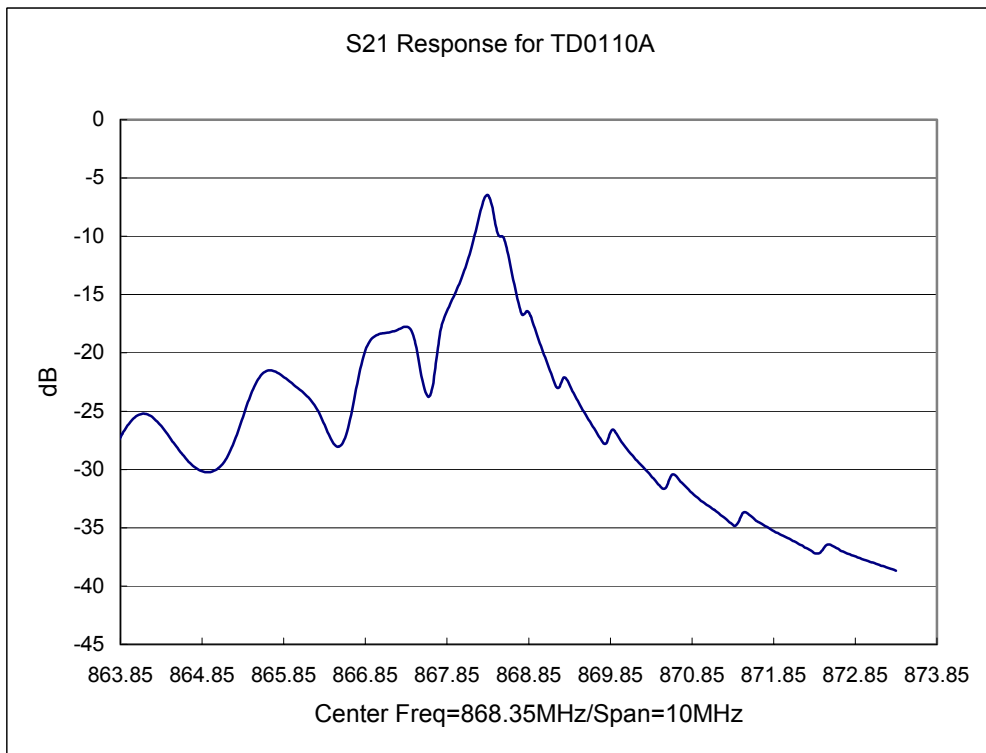
RoHS Compliant  
Lead free  
Lead-free soldering

E. EQUIVALENT CIRCUIT:

Two-Port Resonator:

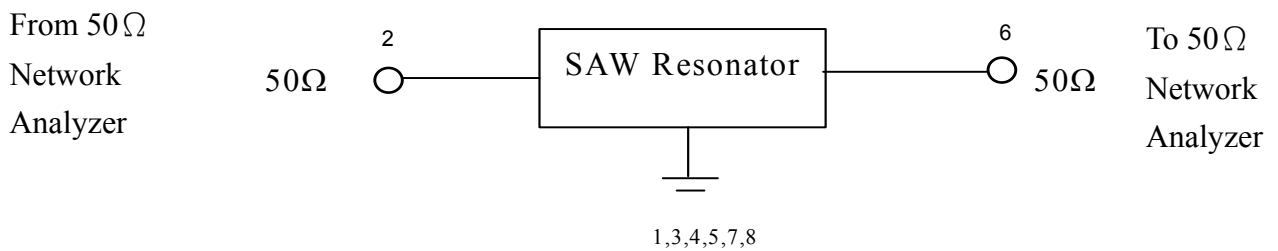


F. FREQUENCY CHARACTERISTICS:



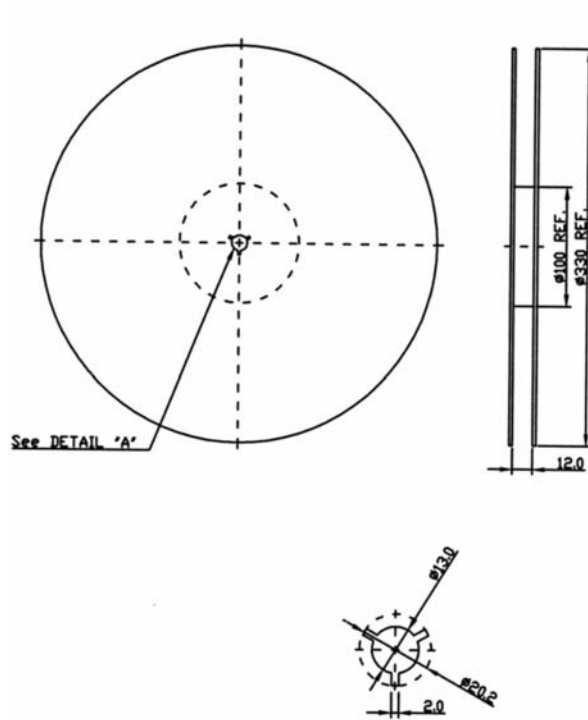
G. TEST CIRCUIT:

Network analyzer



H. PACKING:

1. REEL DIMENSION



2. TAPE DIMENSION

