



TAI-SAW TECHNOLOGY CO., LTD.

No. 3, Industrial 2nd Rd., Ping-Chen Industrial District,
Taoyuan, 324, Taiwan, R.O.C.

TEL: 886-3-4690038 FAX: 886-3-4697532

E-mail: ttsales@mail.taisaw.com Web: www.taisaw.com

Approval Sheet For Product Specification

Issued Date:

Product Name: SAW Filter 60MHz SMD 13.3x6.5mm

TST Parts No.:TB0636A

Customer Parts No.: _____

| |
|---------------------|
| Company: _____ |
| Division: _____ |
| Approved by : _____ |
| Date: _____ |

Checked by: Andy Yu *Andy Yu*

Approval by: Francis Chen *Francis Chen*

Date: 2008/7/15



TAI-SAW TECHNOLOGY CO., LTD.

No. 3, Industrial 2nd Rd., Ping-Chen Industrial District,
Taoyuan, 324, Taiwan, R.O.C.

TEL: 886-3-4690038 FAX: 886-3-4697532

E-mail: tstsales@mail.taisaw.com Web: www.taisaw.com

SAW Filter 60 MHz SMD 13.3mmX6.5mm

MODEL NO.: TB0636A

REV.1.0

A. MAXIMUM RATING:

1. Operating Temperature: -40°C to +85°C
2. Storage Temperature: -40°C to +85°C
3. Input Power Level: 10 dBm
4. Maximum DC Voltage: 10V

RoHS Compliant
Lead free
Lead-free soldering

B. ELECTRICAL CHARACTERISTICS:

1. Ambient Temperature: 25 °C

| Item | Unit | Min. | Type. | Max. |
|--------------------------------|----------|------|-------|------|
| Center frequency, Fc | MHz | - | 60.0 | - |
| Insertion Loss, IL | dB | - | 15.0 | 18.5 |
| 1 dB Bandwidth | MHz | 20.0 | 21.7 | - |
| 3 dB Bandwidth | MHz | - | 22.5 | - |
| 25 dB Bandwidth | MHz | | 25.5 | 30.0 |
| 40 dB Bandwidth | MHz | | 26.8 | 31.0 |
| Pass band Ripple Fc±10.0MHz | P-P dB | - | 0.6 | 1.2 |
| VSWR Fc±10.0MHz | P-P dB | | 6.5 | 7.0 |
| Group delay Variation Fc±10MHz | P-P nsec | | 30 | 100 |
| Triple Transit Suppression | dB | 40 | 43 | |
| Power Handling | dBm | 10 | | |
| Temp Coefficient | ppm/K | - | -23 | - |

D. FREQUENCY CHARACTERISTICS :

1.S21 Response: (span : 70MHz)

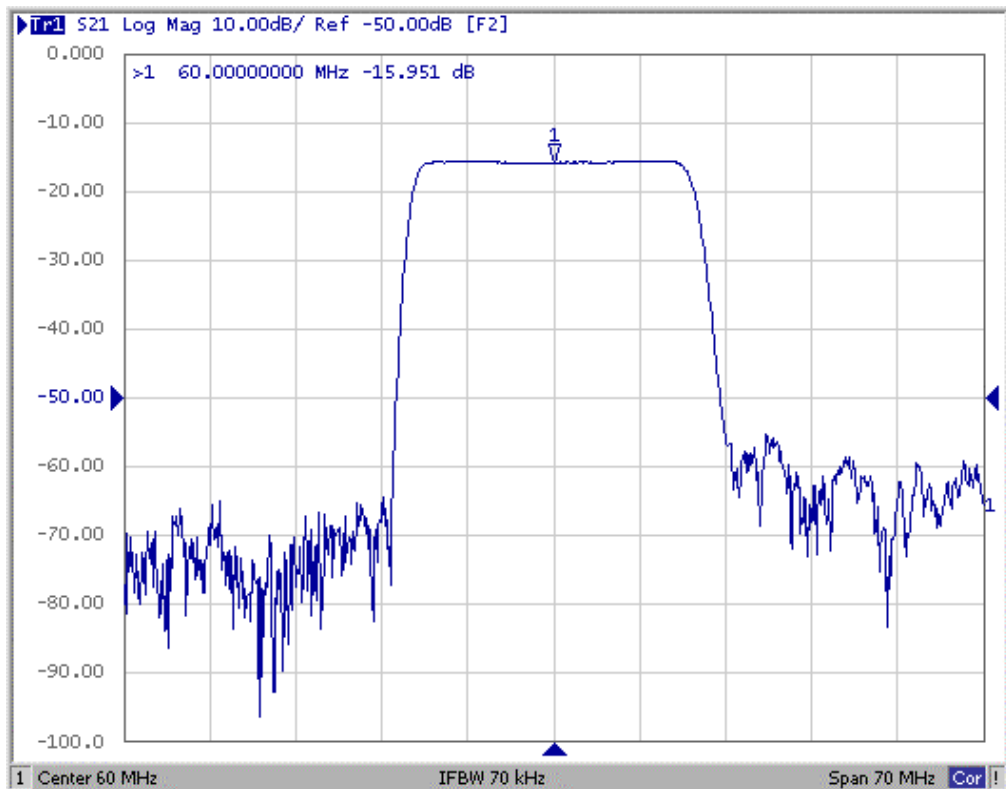


Fig1. Horizontal: 7MHz/Div Vertical: 10dB/Div

2. Group-Delay Ripple: (span : 30MHz)

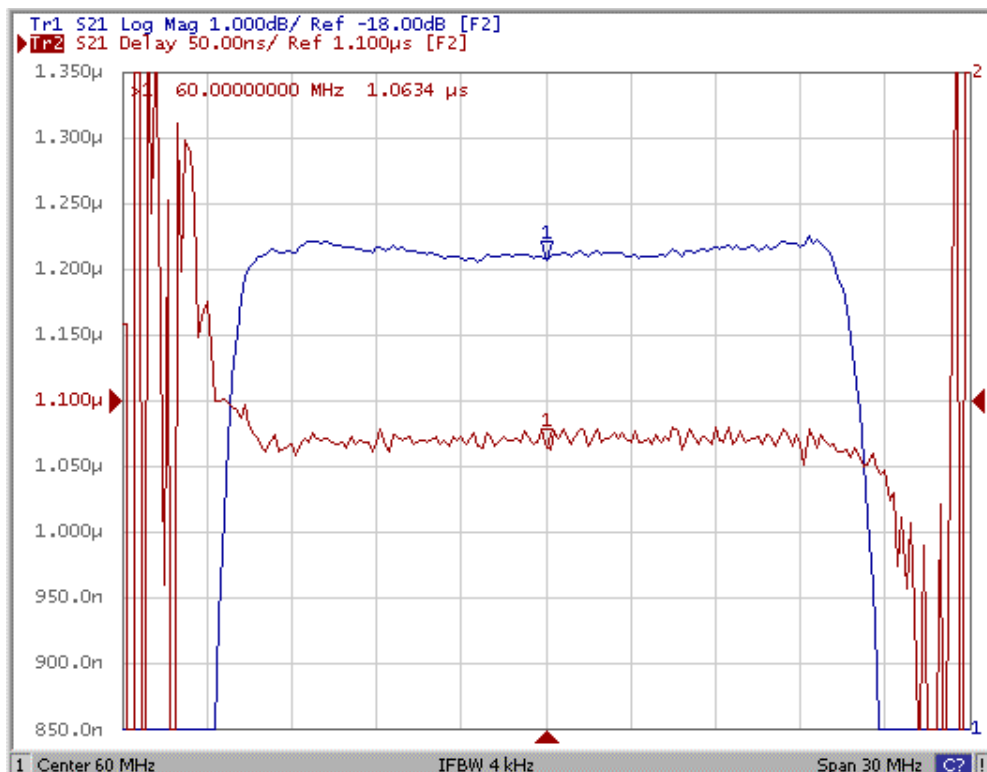
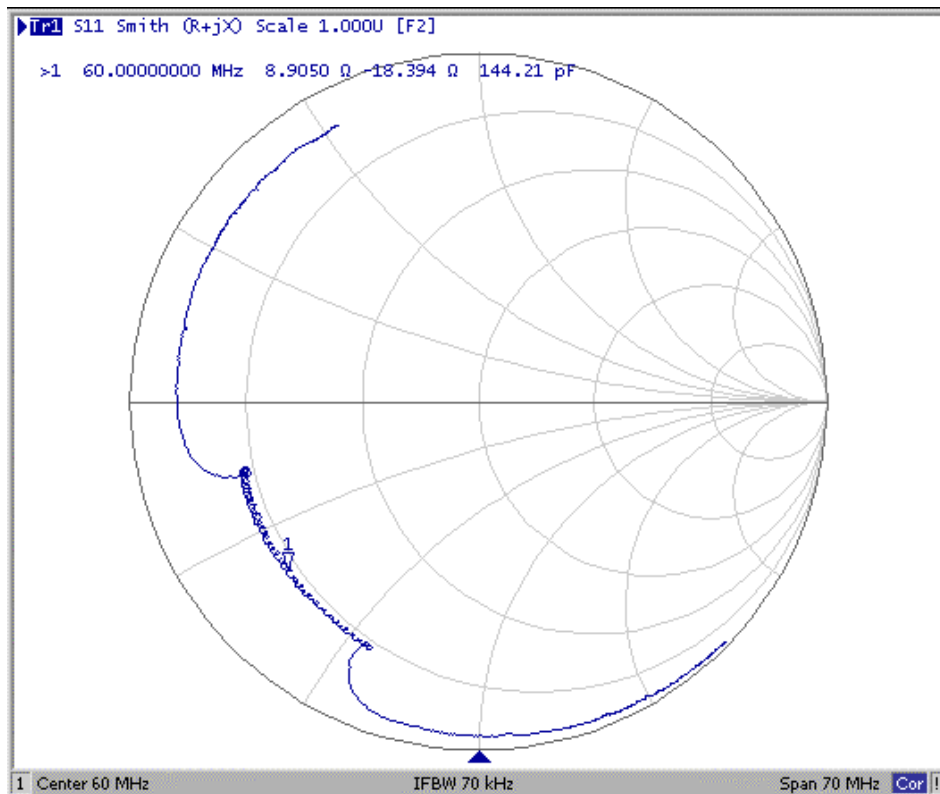
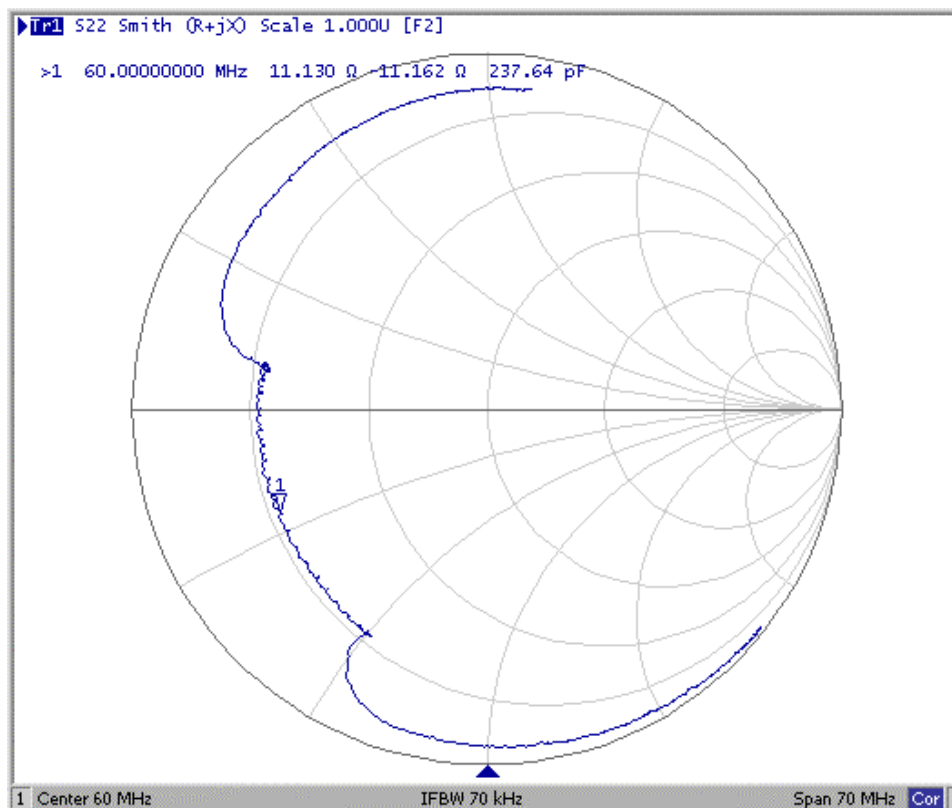


Fig2. Horizontal: 3.0MHz/Div Vertical: 50nec/Div

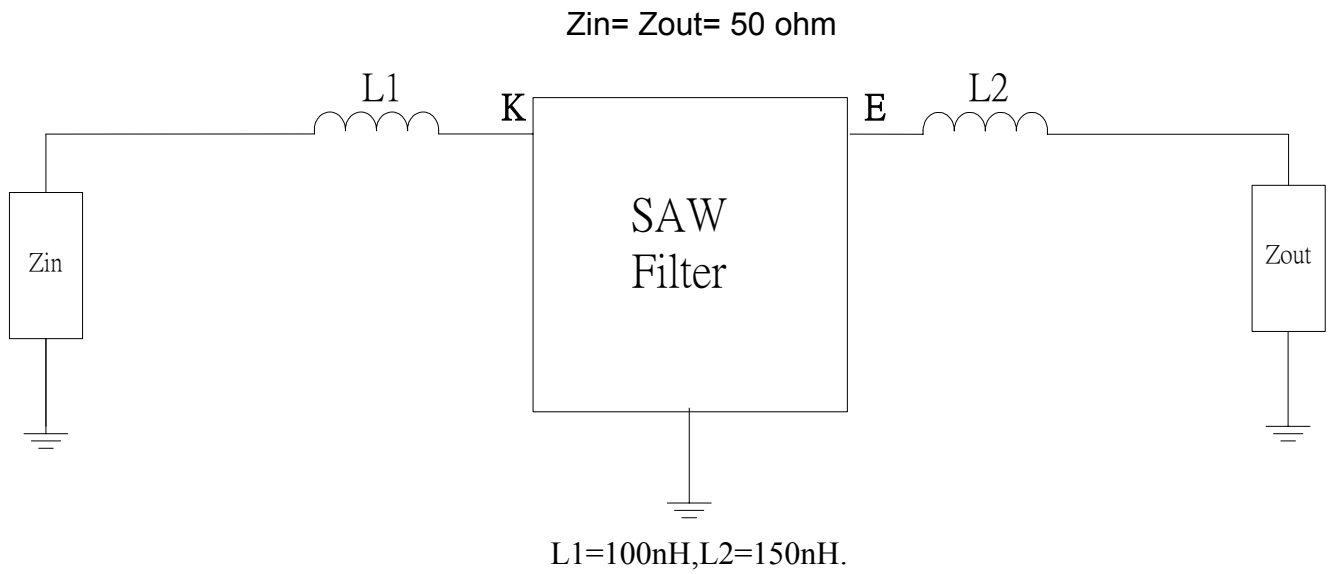
3. S11 Smith Chart: (span : 70MHz)



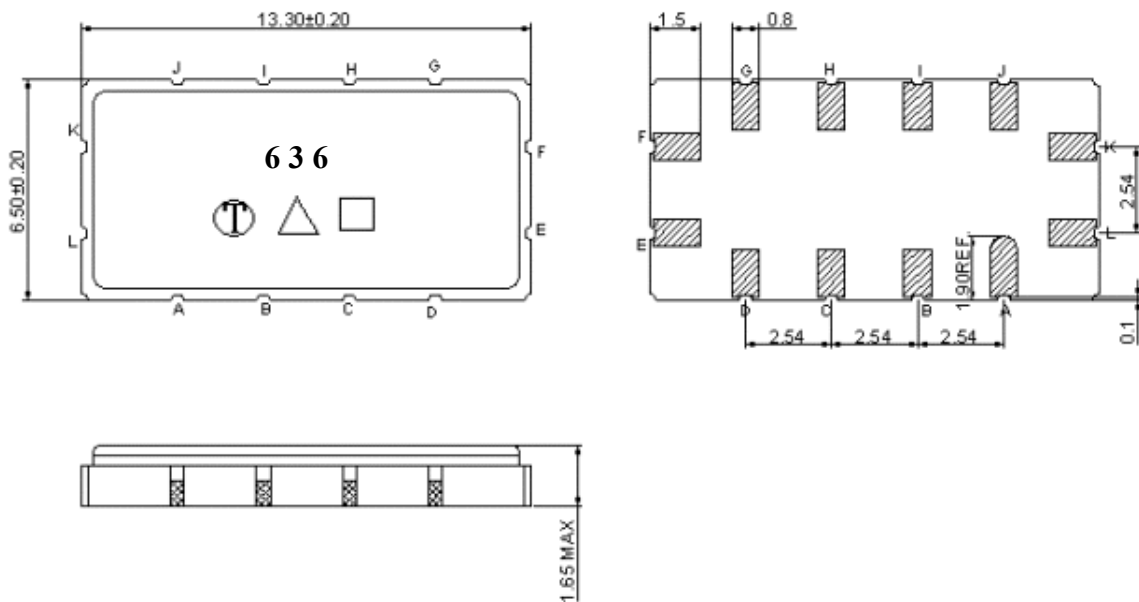
3. S22 Smith Chart (span : 70MHz)



E. MEASUREMENT CIRCUIT



F. OUTLINE DRAWING:



Pin K: RF input

Pin E: RF output

Pin A, B, C, D, G, H, I, L, F J: To be Ground

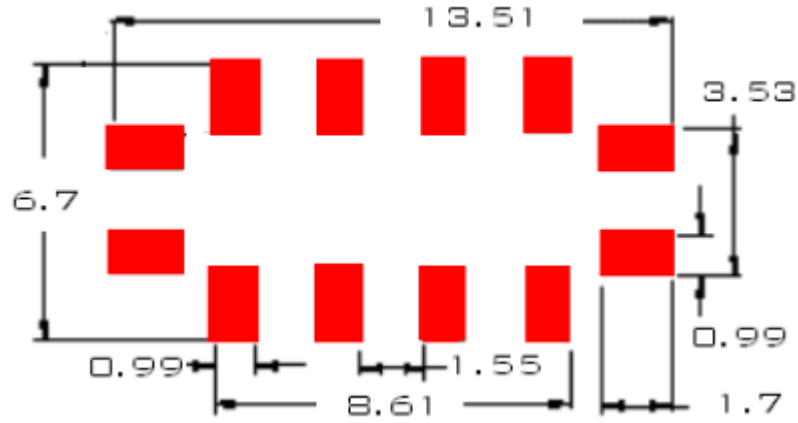
□ : Week Code (Follow the table from planner each year)

Unit : mm

△ : Product / Year Code

| | | | | |
|--------------|--------------|--------------|--------------|--------------|
| Year | 2005 2009 | 2006 2010 | 2007 2011 | 2008 2012 |
| Product Code | B | b | <u>B</u> | <u>b</u> |

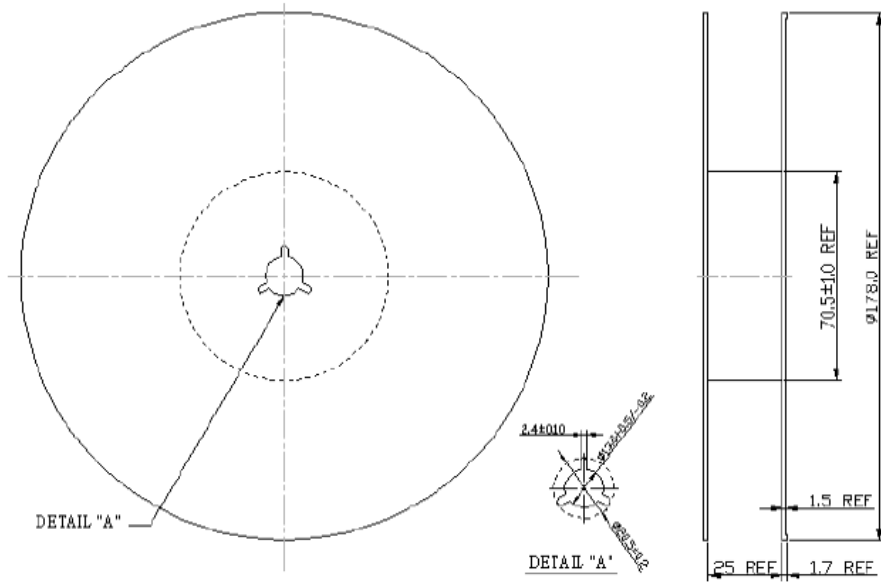
G. PCB Footprint



Unit: mm

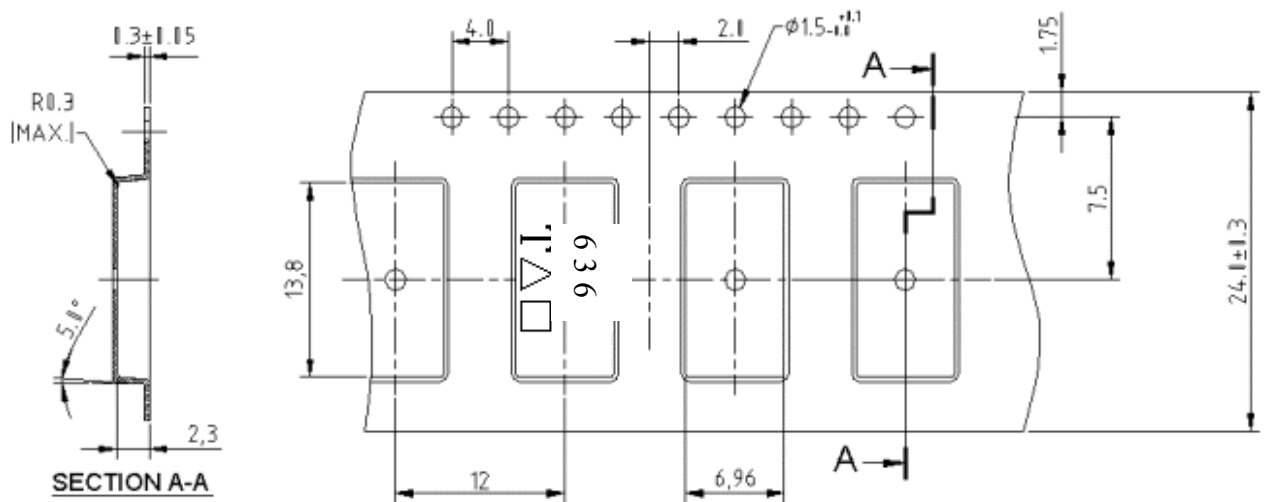
H. PACKING:

1. REEL DIMENSION



Unit: mm

2. TAPE DIMENSION



Unit: mm

I. RECOMMENDED REFLOW PROFILE_:

