



# Frontier Electronics Corp.

667 E. COCHRAN STREET, SIMI VALLEY, CA 93065

TEL: (805) 522-9998 FAX: (805) 522-9989

E-mail: frontiersales@frontierusa.com

Web: frontierusa.com

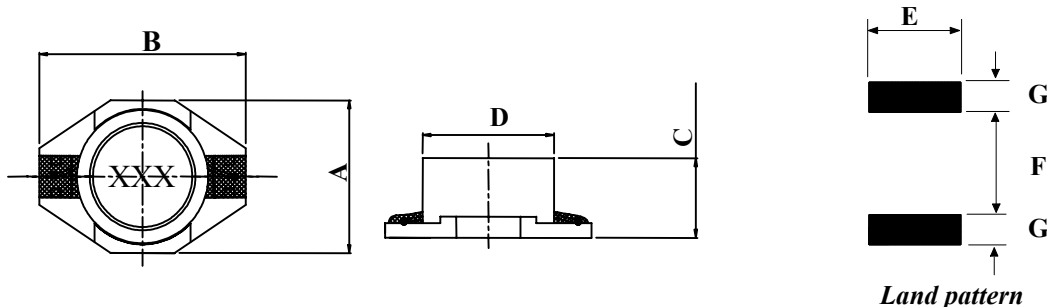
## SMD Power Choke—CSS042C series

### A. Electrical specifications:

Part No.	Mark	L (uH)	Test Freq.	DCR (max.) $\Omega$	Q (min.)	I rms. (A)
CSS042C-1R0M	102	1.0	100KHz	0.040	30@200KHz	3.00
CSS042C-1R5M	152	1.5	100KHz	0.045	30@200KHz	2.80
CSS042C-2R2M	222	2.2	100KHz	0.050	40@200KHz	1.80
CSS042C-3R3M	332	3.3	100KHz	0.055	40@200KHz	1.60
CSS042C-4R7M	472	4.7	100KHz	0.060	40@200KHz	1.40
CSS042C-6R8M	682	6.8	100KHz	0.065	40@200KHz	1.20
CSS042C-100M	103	10	100KHz	0.075	40@200KHz	1.00
CSS042C-150M	153	15	100KHz	0.090	40@100KHz	0.80
CSS042C-220M	223	22	100KHz	0.110	40@100KHz	0.70
CSS042C-330M	333	33	100KHz	0.190	40@100KHz	0.60
CSS042C-470M	473	47	100KHz	0.230	40@100KHz	0.50
CSS042C-680M	683	68	100KHz	0.290	40@100KHz	0.40
CSS042C-101M	104	100	100KHz	0.480	40@100KHz	0.30
CSS042C-151M	154	150	100KHz	0.590	40@100KHz	0.26
CSS042C-221M	224	220	100KHz	0.770	40@100KHz	0.22
CSS042C-331M	334	330	100KHz	1.40	40@100KHz	0.20
CSS042C-471M	474	470	100KHz	1.80	40@100KHz	0.19
CSS042C-681M	684	680	100KHz	2.20	40@100KHz	0.18
CSS042C-102M	105	1000	100KHz	3.40	40@100KHz	0.15
CSS042C-152M	155	1500	100KHz	4.20	50@100KHz	0.12
CSS042C-222M	225	2200	100KHz	8.50	50@100KHz	0.10
CSS042C-332M	335	3300	100KHz	11.00	50@100KHz	0.08
CSS042C-472M	475	4700	100KHz	13.90	50@100KHz	0.06
CSS042C-682M	685	6800	100KHz	25.00	50@100KHz	0.04
CSS042C-103M	106	10000	100KHz	32.80	50@100KHz	0.02

### B. Mechanical dimensions: (Unit: mm):

SERIES	A (Max.)	B (Max.)	C (Max.)	D (Ref.)	E	F	G
CSS042C	4.45	6.60	2.92	4.0	3.56	4.06	1.40



### C. Features:

1. Tolerance: M:  $\pm 20\%$ .
2. Operating temperature:  $-25^{\circ}\text{C}$  TO  $+85^{\circ}\text{C}$ .
3. Electrical specifications at  $+25^{\circ}\text{C}$ .
4. Inductance measured on the HP4284A LCR meter.
5. DCR measured on the 502BC milli-ohm meter.
6. Temperature rises  $\Delta t < 30^{\circ}\text{C}$  (Typical) at rated I rms.

**Note:** *RoHS compliant; for the ROHS parts, we add “-LFR” at the end of the P/N.*



# Frontier Electronics Corp.

667 E. COCHRAN STREET, SIMI VALLEY, CA 93065

TEL: (805) 522-9998 FAX: (805) 522-9989

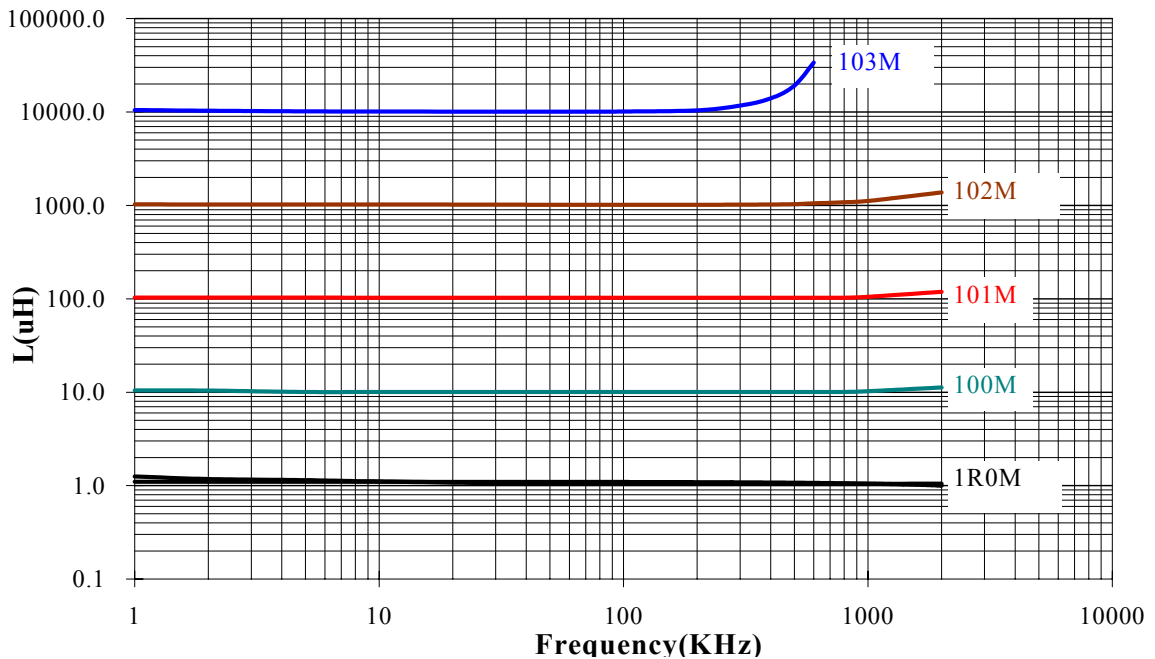
E-mail: frontiersales@frontierusa.com

Web: frontierusa.com

## SMD Power Choke—CSS042C series

### D. Characteristic curve:

#### 1. L vs. Frequency:



#### 2. L vs. Current:

