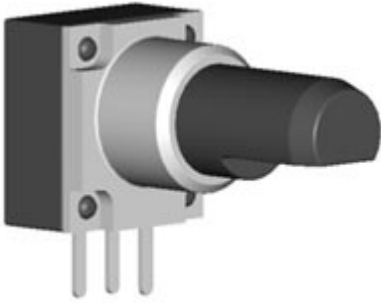


Model(型號): **ROTARY POTENTIOMETER-----R10611VB1**

► [Download PDF file](#)



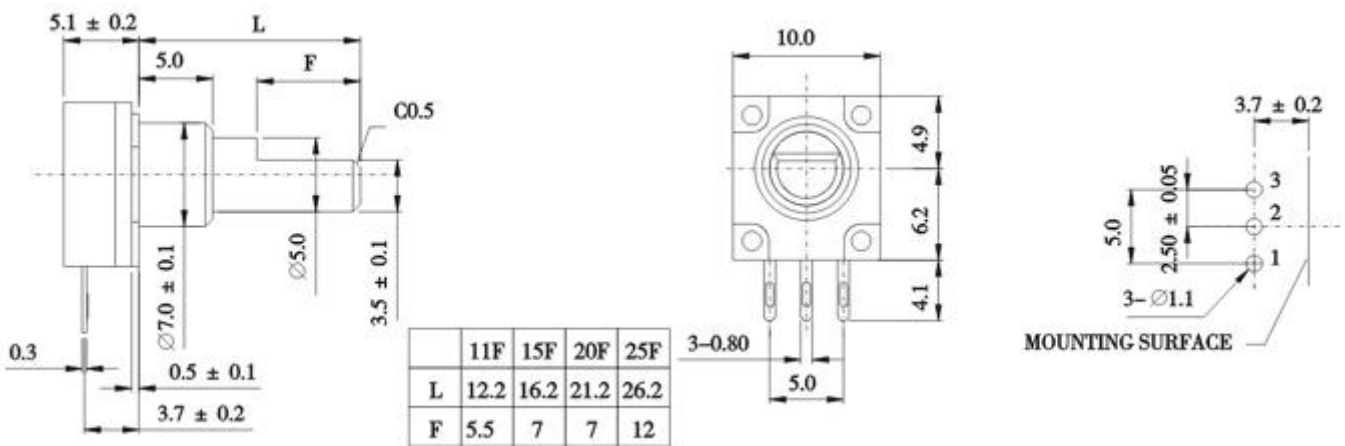
**Features:(特點):**

Thanks to its structure eliminating openings,the dust-proofing capacity and flux resistance have been improved.9.8mm outing size is ideal for high-density set design.

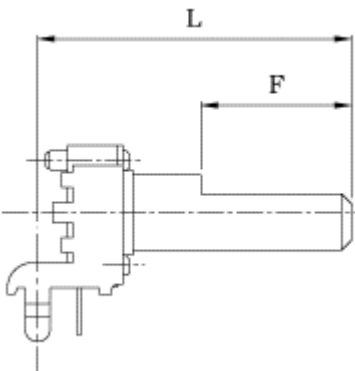
**Applications(作用):**

Suitable for various control applications with audio products,visual products,electronic musical instrument, etc.

**Dimensions(規格圖):**

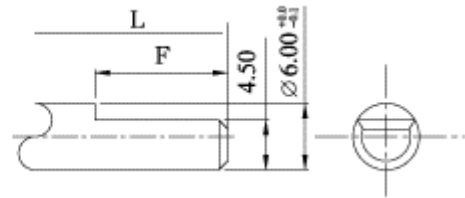


**TYPE OF KNOB**



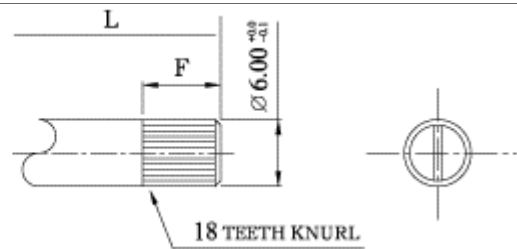
**F Type**

L	15	20	25	30	35
F	6	7	12	12	12



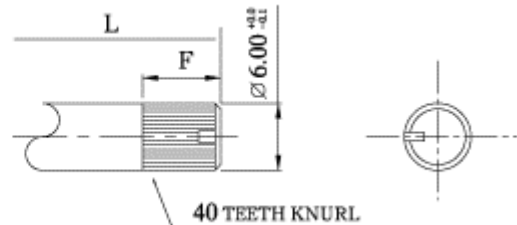
**K Type**

L	20	25	30	35
F	7	7	7	7



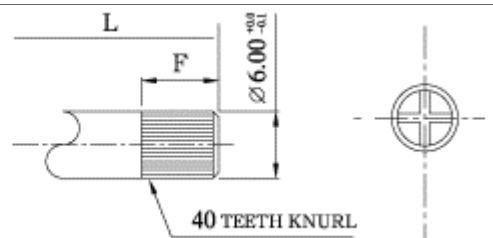
**E Type**

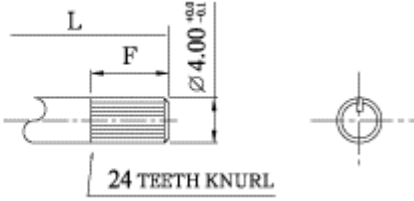
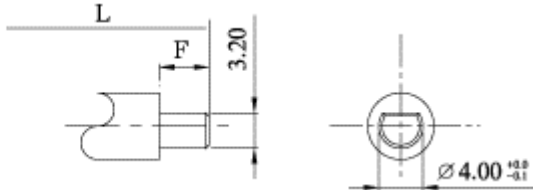
L	15	20	25	30	35
F	6	7	7	7	7



**P Type**

L	9.5	15	20	25	30	35
F	0	6	7	7	7	7



	<b>Q Type</b>			
	L	20 25 30 35		
	<b>C Type</b>			
	L	12.5		
	F	4.5		

**Specifications( 規格)**

**Electrical Characteristics [ 電氣性能 ]**

Carbon coat active angle[碳膜有效角度]	$\square \pm 2^\circ$
Total resistance [ 全阻抗值 ]	$\square \pm \%$ $\square \%$ ~ $\%$
Ratings power(w) [ 額定功率 ]	0.0125W
Resistance taper [ 阻抗變化特性 ]	B(Linear $\pm 5\%$ ) B ( 線性 $\pm 5\%$ )
Residual resistance [ 殘留阻值 ]	Less than 1K $\Omega$ between terminal 1&2. Less than 1K $\Omega$ between terminal 2&3 端子 1&2 和 2&3 同在1K $\Omega$ 以下.
Sliding noise [ 滑動雜音 ]	By JIS methos,300mV Max. 依JIS測試法，300mV 以下
Withstanding voltage [耐電壓]	1 minute at D.C 5V
Insulation resistance [絕緣阻抗]	D.C25V,over 100M $\Omega$ Min. D.C25V,須在100M $\Omega$ 以上.

**Mechanical Characteristics [ 機械性能 ]**

Operation torque [ 回轉力矩 ]	3~10gf . cm
Total rotational angle [回轉角度]	300 $\pm 5^\circ$

**Endurance Characteristics [ 耐久性能 ]**

Rotational life [ 回轉壽命 ]	More than1,000,000 cycles
Rotational life [ 使用溫度 ]	- 10 $^\circ$ C~70 $^\circ$ C