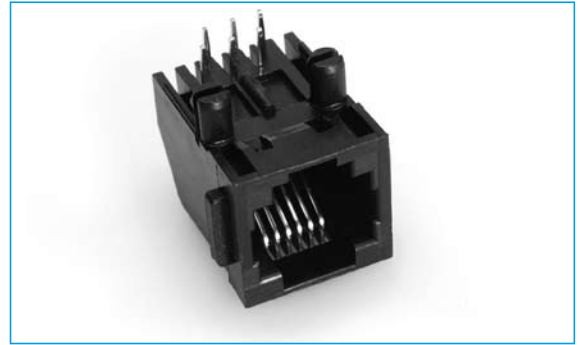


## NETWORKING SOCKETS

## LOW PROFILE SIDE ENTRY PCB JACK (A)

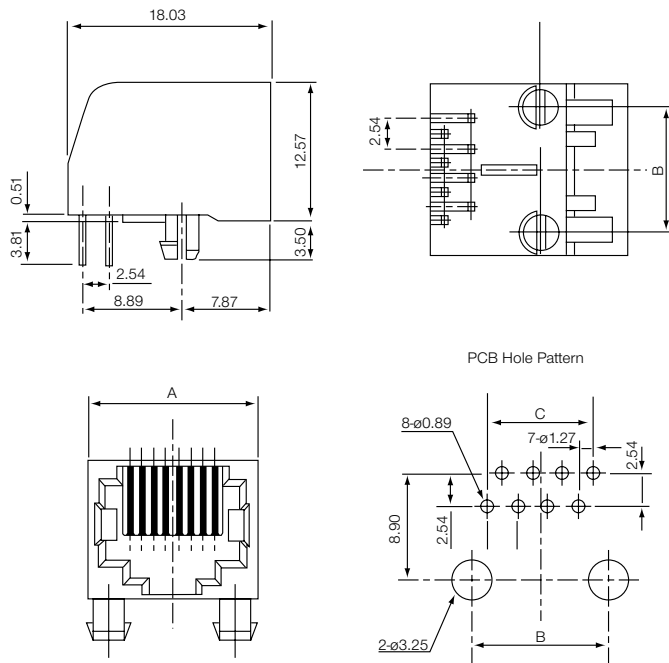
- 4 - 8 way
- Board Solderable
- Competitively priced



## SPECIFICATION

<b>Current Rating</b>	3A
<b>Contact Resistance</b>	30mΩ max at DC 100mA
<b>Dielectric withstanding Voltage</b>	AC 500V for 1 minute
<b>Insulation Resistance</b>	1000mΩ min at DC 500V
<b>Plating</b>	Selective gold plating over Nickel Tin plate on solder foils
<b>Housing</b>	UL94V0 Standard
<b>Colour</b>	Black
<b>Contact</b>	0.35mm Phosphor Bronze
<b>Operating Temperature</b>	-55°C to +105°C

## OUTLINE DRAWING



No of Positions	Dimensions		
	A	B	C
4	11.18	7.62	3.81
6	13.21	10.16	6.35
8	15.24	11.43	8.89

SECTION 16

## ORDERING INFORMATION

DBC	RJ	S	88	E
Dubilier Connectors	Series	Contact Type S = Socket	No. of Ways x No. of loaded contacts 4 x 4 6 x 6 8 x 8	Style E = Low Profile Side Entry PCB Jack