



Data Sheet



Product Category: RF SAW Filter

Part Number	Package	Application	Last Modified
803-RF491.2M-A	3.8 x 3.8 SMD	CDMA450(F-Band) Rx	Nov 05, 2008

TYPE :

CDMA450(F-Band), RF-Rx SAW Filter



PART NUMBER :

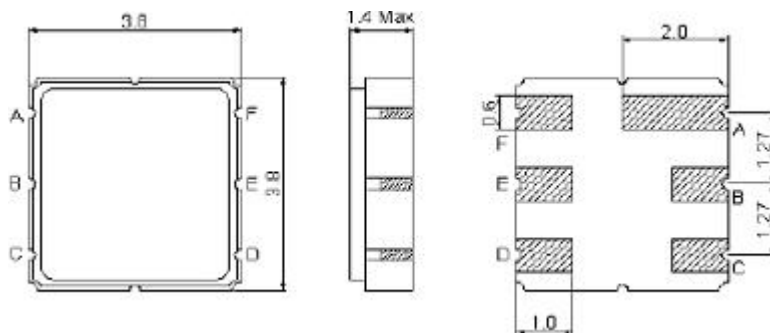
803-RF491.2M-A

OPERATING CONDITIONS / ELECTRICAL CHARACTERISTICS

PARAMETERS	Condition	Minimum	Typical	Maximum	Units
Center Frequency (Fo)	-	-	491.2	-	MHz
Maximum Insertion Loss	489.0 ~ 493.5 MHz	-	2.5	4.8	dB
Stop Band Attenuation:	0.3 ~ 479.0 MHz	40	50	-	dB
	479.0 ~ 483.5 MHz	35	49	-	
	515.0 ~ 800.0 MHz	40	49	-	
	800.0 ~ 1200.0 MHz	30	42	-	
	1200.0 ~ 2000.0 MHz	20	35	-	
Source Impedance (single ended)*	-	-	50	-	ohm
Load Impedance (single ended)*	-	-	50	-	ohm
VSWR	489.0 ~ 493.5 MHz	-	1.5	2.0	-
Maximum Input Power	-	-	-	27	dBm
Operating Temperature	-	-30	-	+80	°C

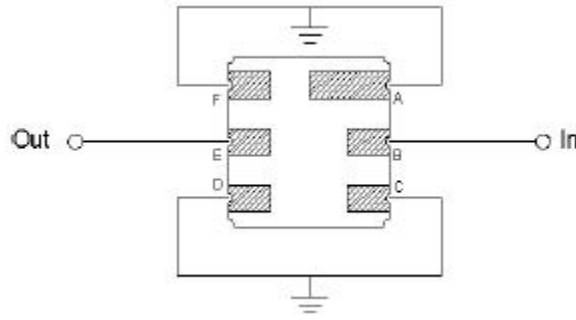
* No Matching Network

PACKAGE OUTLINE (mm)



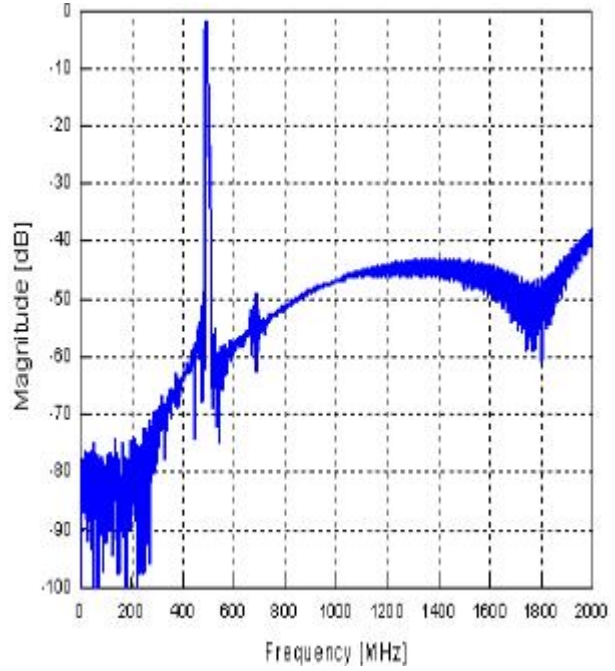
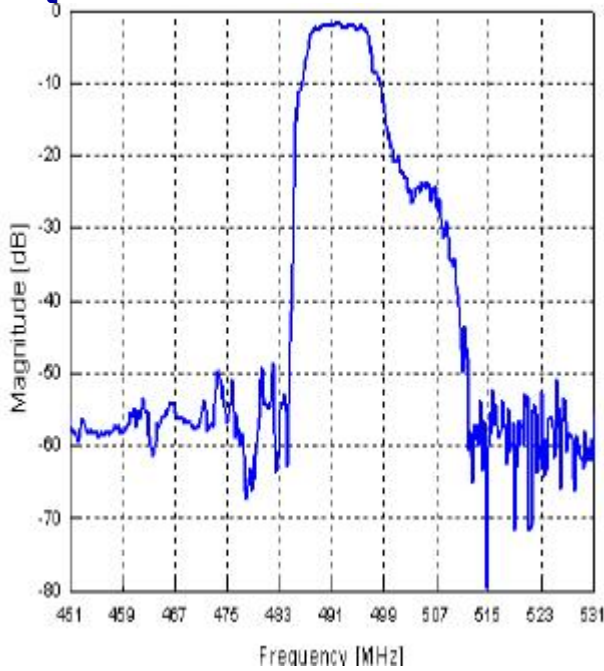
PIN LAYOUT	
A	Ground
B	In
C	Ground
D	Ground
E	Out
F	Ground

TEST FIXTURE

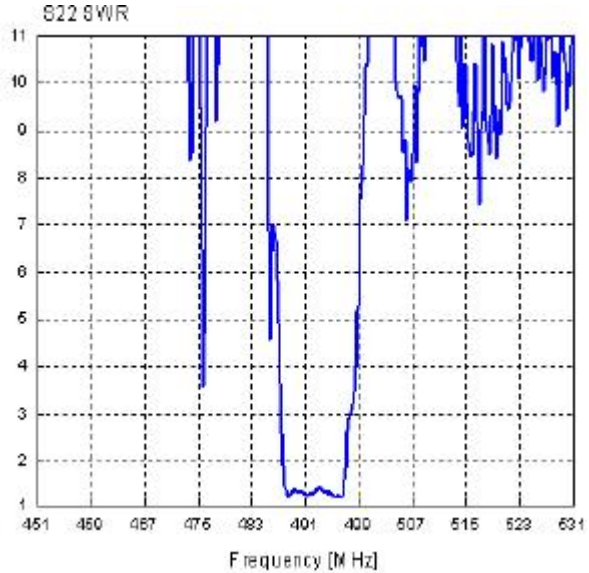
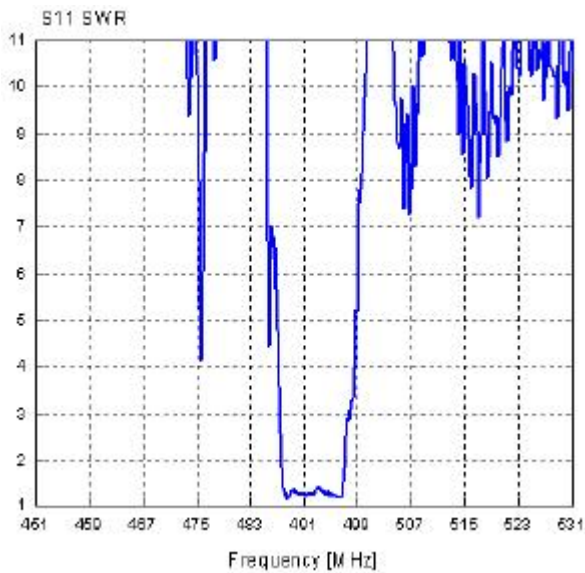


Load Impedance = 50 ohms
 Source Impedance = 50 ohms

FREQUENCY RESPONSE



VSWR



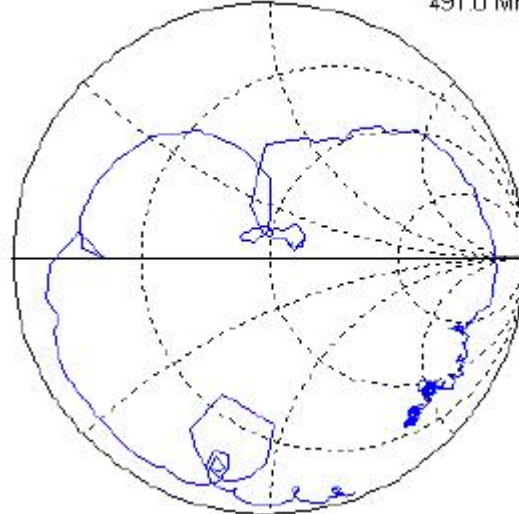
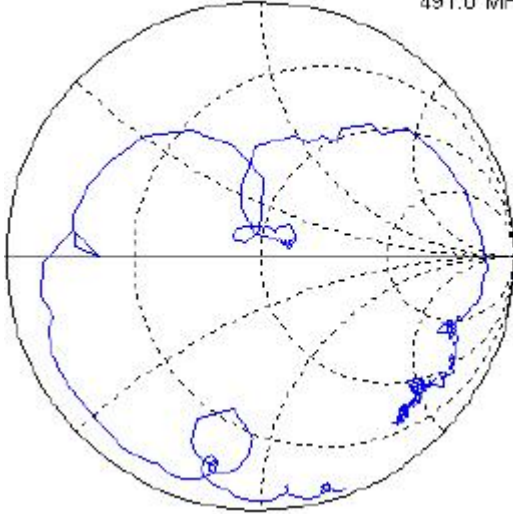
SMITH CHART

S11

$48.4479+j11.4963$
491.0 MHz

S22

$49.0577+j11.5532$
491.0 MHz



Oscilent Corporation - CALL **949.252.0522**

18195 East McDermott Street, Building D, Irvine, CA 92614, USA
Fax: 949.252.0599, E-Mail: Sales@Oscilent.com

Part No.: 803-RF491.2M-A