

Specifications

Voltage Rating:	75V
Current Rating:	1 A
Insulation Resistance:	500MΩ min. at 500V DC
Withstanding Voltage:	250 V AC for 1 minute
Contact Resistance:	30mΩ max. at 10mA / 20mV
Operating Temperature:	-55°C ~ +85°C
Soldering Temperature:	220°C max. for 2 minutes max. (VPS) 250°C max. for 1 minute max. (IR)
Mating Cycles:	10 insertions max.

Materials and Finish

Insulation Cover: Polyphenylenesulphide (PPS), UL94V-0
 Contacts: Beryllium Copper (BeCu), SnBi (3.0 ~ 7.0μm) plating



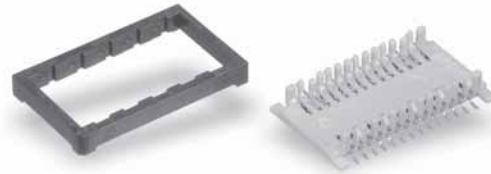
Features

- ⇨ SMT type SOP production socket
- ⇨ Same pattern as IC
- ⇨ Low profile design: for 28 and 32 pins, height = 3.9 mm
for 44 pins, height = 4.3 mm

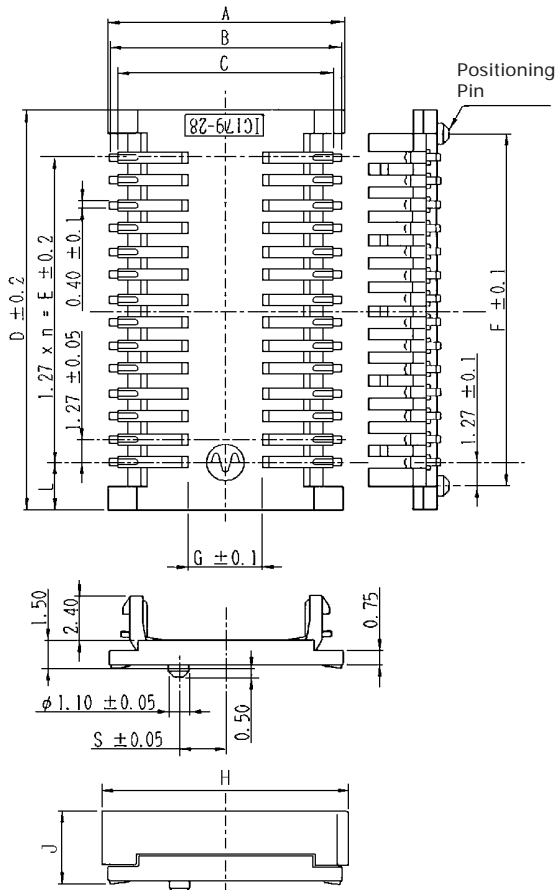
Part Number (Details)

IC179Z – 28 450 - 5 0 0 1

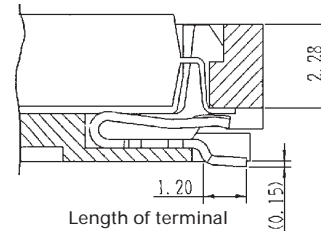
Series No.	IC179Z
No. of Contact Pins	28
IC Row Spacing (MIL)	450
Design Number	5 0 0 1
0: Without Dummy Cover	
0: Without Positioning Pin	
1: With Positioning Pin	
Unmarked: Tray Packaging	
1: Tape & Reel Packaging	



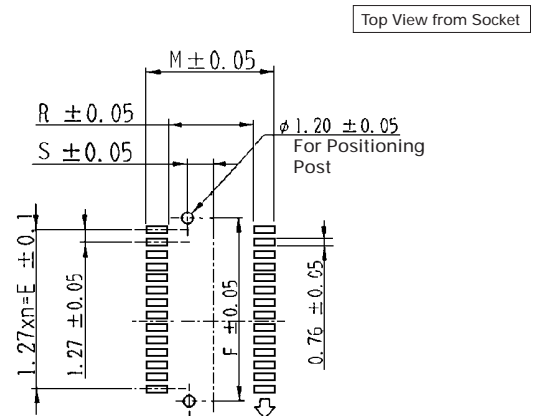
Outline Socket Dimensions



Contact Position Detail



Recommended PCB Layout



Applicable Socket Dimensions

Part Number	Pin Count	A	B	C	D	1.27xn=E	F	G	H	J	M	R	S
IC179Z-28450-500	28	12.80	12.60	11.66	21.60	1.27x13=16.51	19.05	4.0	13.50	3.9	13.60	9.20	2.54
IC179Z-28450-5001	28	12.80	12.60	11.66	21.60	1.27x13=16.51	19.05	4.0	13.50	3.9	13.60	9.20	2.54
IC179Z-28450-501	28	12.80	12.60	11.66	21.60	1.27x13=16.51	19.05	4.0	13.50	3.9	13.60	9.20	2.54
IC179Z-32525-500	32	15.10	15.00	13.90	24.25	1.27x15=19.05	21.59	6.3	17.10	3.9	15.90	11.50	3.81
IC179Z-32525-5001	32	15.10	15.00	13.90	24.25	1.27x15=19.05	21.59	6.3	17.10	3.9	15.90	11.50	3.81
IC179Z-32525-501	32	15.10	15.00	13.90	24.25	1.27x15=19.05	21.59	6.3	17.10	3.9	15.90	11.50	3.81
IC179Z-44600-500	44	17.00	16.90	15.80	34.75	1.27x21=26.67	29.21	8.2	22.00	4.3	17.80	13.40	5.08
IC179Z-44600-5001	44	17.00	16.90	15.80	34.75	1.27x21=26.67	29.21	8.2	22.00	4.3	17.80	13.40	5.08
IC179Z-44600-501	44	17.00	16.90	15.80	34.75	1.27x21=26.67	29.21	8.2	22.00	4.3	17.80	13.40	5.08

Recommended IC Dimensions

Part Number	Pin Count	Si	T	U	V	W (max.)
IC179Z-28450-5**(*)	28	11.50-12.25	8.00 - 9.00	18.70	0.60-1.20	2.70
IC179Z-32525-5**(*)	32	13.80-14.60	10.50-11.50	21.60	0.60-1.20	3.10
IC179Z-44600-5**(*)	44	15.64-16.44	12.30-13.40	30.50	0.60-1.20	3.10

