

Receive Band Pass Filter

EPB5012G

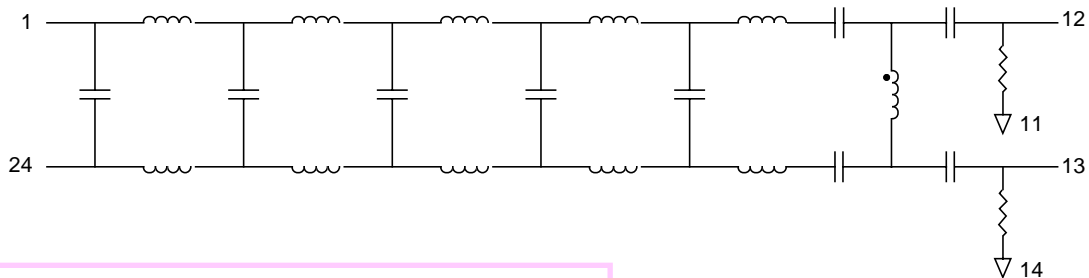
- Globespan Cap Solution •
- Robust construction allows for IR/VP processes •
- Available in SMD Package •
- Temperature Range -40°C to +85°C •

Electrical Parameters @ 25° C

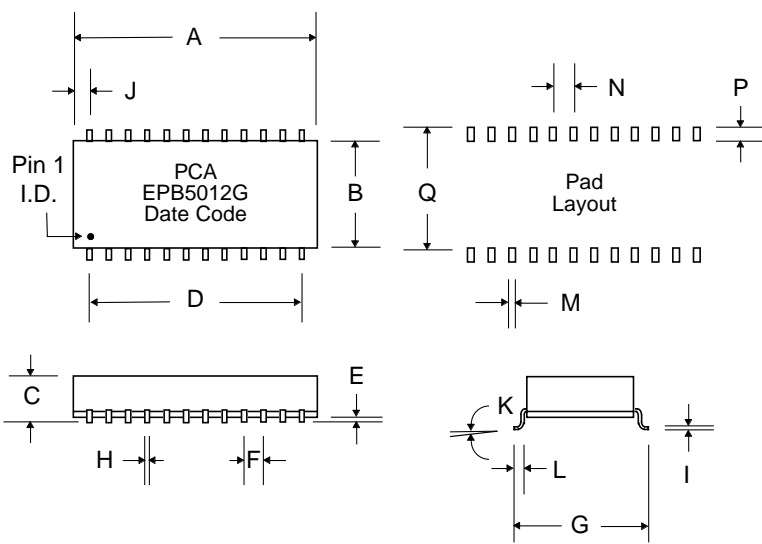
High Pass Cut-off Response	High Pass Response (dB)	High Pass Response (dB)	Pass Band Freq. Range (dB)	Low Pass Cut-off Response	Low Pass Response (dB)	Low Pass Response (dB)	In Band Insertion Loss (dB Max.)	In Band Return Loss (dB Max.)	In Band Group Delay (µS Max.)	Stop Band Attenuation (dB Min..)
*25 KHz - 30 KHz	@ 18 KHz	@ 4 KHz	35 KHz - 160 KHz	*@190 KHz	@ 220 KHz	@ 280 KHz	35 KHz - 160 KHz	35 KHz - 160 KHz	45 KHz - 170 KHz	280 KHz - 2 MHz
-3 dB	-10	-50	-3	-3 dB	-25	-50	-1.0	-16	**20	-40

- Filter Characteristic Impedance : 200 Ω ± 5% • Max. Input Signal Power : +20 dB m • Peak Input Differential Volt. : 30 Vac •
- *Reference to : 50 KHz • ** : (8 uS Typ.) •

Schematic



Package



Dimensions

Dim.	(Inches)			(Millimeters)		
	Min.	Max.	Nom.	Min.	Max.	Nom.
A	1.26	1.28	1.27	32.00	32.51	32.26
B	.553	.573	.563	14.30	14.55	14.30
C	.235	.255	.245	5.97	6.48	6.22
D	---	---	1.10	---	---	27.94
E	.010	.015	.0125	.254	.381	.318
F	---	---	.100	---	---	2.54
G	.673	.693	.683	17.09	17.60	17.35
H	.017	.021	.019	.432	.533	.483
I	.008	.012	.010	.203	.305	.254
J	---	---	.085	---	---	2.16
K	0°	8°	---	0°	8°	---
L	.025	.045	.035	.635	1.14	.889
M	---	---	.040	---	---	1.02
N	---	---	.100	---	---	2.54
P	---	---	.100	---	---	.100
Q	---	---	.790	---	---	20.07