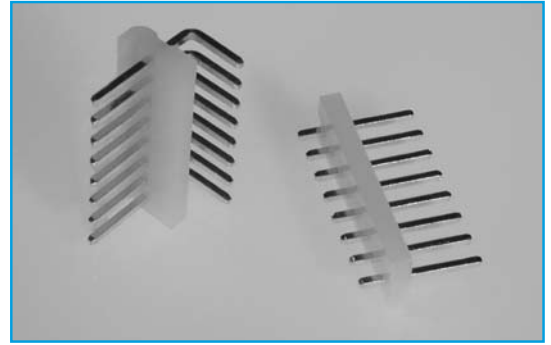


BOARD TO WIRE CONNECTORS

- 2 - 20 ways
- PCB thickness 1.6mm
- Current rating 7A AC, DC
- Voltage rating 250v AC, DC

STRAIGHT AND RIGHT ANGLE



SPECIFICATION

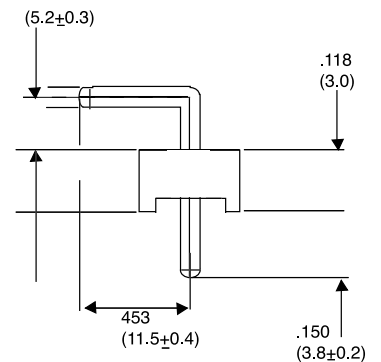
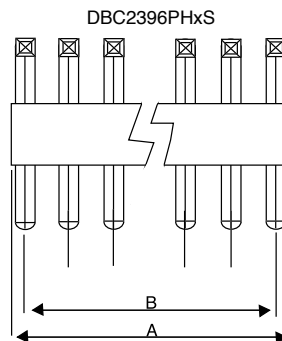
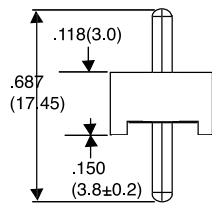
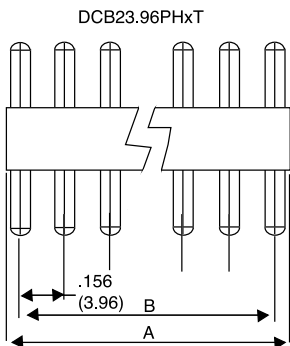
General

Withstand Voltage:	1500v AC/min
Insulation Resistance:	1000MΩ min
Temperature Range:	+25 °C to +85 °C
Contact Resistance:	Initial Value/10mΩ max. After Environmental Testing/20mΩ max.

Material

Post:	Brass Tin/Plated
Base:	Nylon 66, UL 94V-2

OUTLINE DRAWING



Dim	mm
A	No ways x 3.96
B	(No ways x 3.96) - 3.96

ORDERING INFORMATION

DBC	2	3.96 PH	2	T
Dubilier Connectors	Series	Pitch	N° of Ways	Style
		3.96 PH = 3.96mm pitch	2 = 2ways 10 = 10ways etc	T = Top Entry S = Side Entry 90°