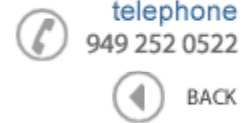


**Data Sheet**
 telephone  
 949 252 0522

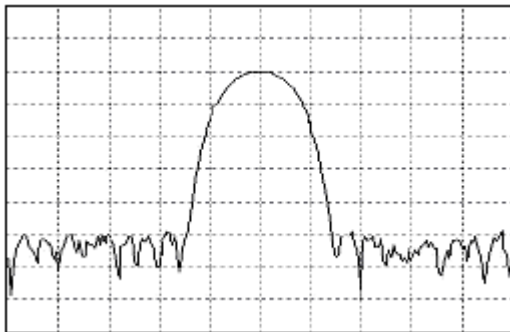

BACK

Product Category: IF SAW Filter

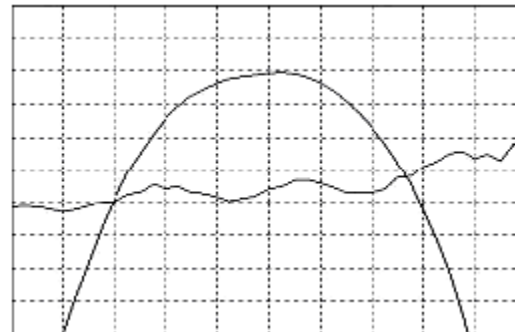
Part Number	Package	Application	Last Modified
819-IF100.0M-C	19 x 6.5 SMD	Base Station, Repeater, HDR, IMT-2000	May 02 2003

**TYPE :**

100.0 MHz Bandpass Filter  
 0.47 MHz Bandwidth

**PART NUMBER :****819-IF100.0M-C**

Horizontal : 0.5 MHz/Div  
 Vertical : 10 dB/Div



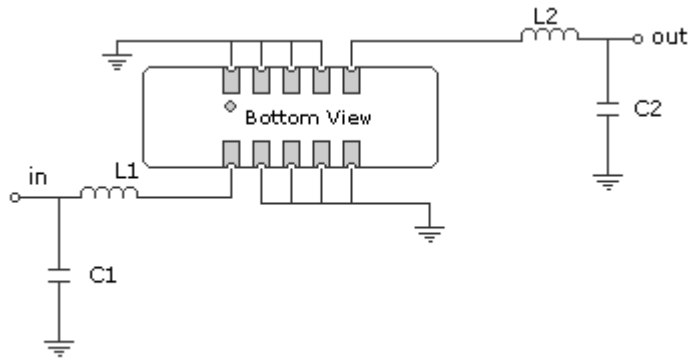
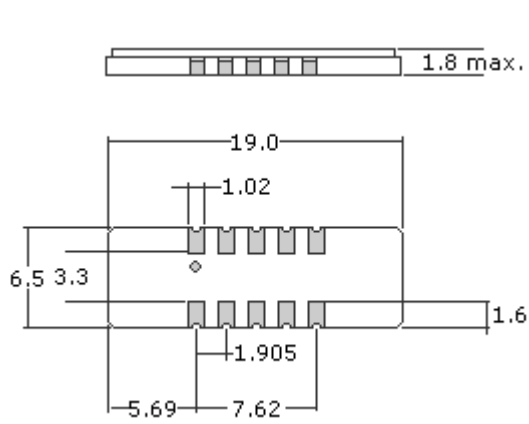
Horizontal : 0.1 MHz/Div  
 Vertical : 1 dB/Div  
 Vertical : 100 ns/Div

**OPERATING CONDITIONS / ELECTRICAL CHARACTERISTICS**

PARAMETERS	Minimum	Typical	Maximum	Units
Center Frequency	99.97	100.0	100.03	MHz
Insertion Loss	-	13.7	15.0	dB
1dB Bandwidth	0.30	0.34	-	MHz
3dB Bandwidth	0.47	0.55	-	MHz
40dB Bandwidth	-	1.38	1.40	MHz
Passband Ripple	-	0.8	1.5	dB
Group Delay Variation	-	250	500	nsec
Absolute Delay	-	2.4	-	µsec
Ultimate Rejection	45	55	-	dB
Substrate Material	-	Quartz	-	-
Ambient Temperature	-	25	-	°C
Phase Linearity	-	3.0	6.0	deg

\* Custom SAW IF Filters available. Contact Oscilent for assistance.

**PACKAGE OUTLINE (mm)****TEST FIXTURE**



L1 = 162nH                      L2 = 132nH  
 C1 = 18pF                        C2 = 39pF  
 Source/Load Impedance = 50 ohms

**Oscilent Corporation** - CALL **949.252.0522**  
 17962 Sky Park Circle, Building D, Irvine, CA 92614, USA  
 Fax: 949.252.0599, E-Mail: Sales@Oscilent.com

**Part No.:** 819-IF100.0M-C

Crystal Oscillators | Quartz Crystal | TCXO | VCXO | IF SAW Filter | RF SAW Filter | Ceramic Resonator  
 Crystal Filter | Ceramic Filter | SAW Filter / SAW Devices | Site Map