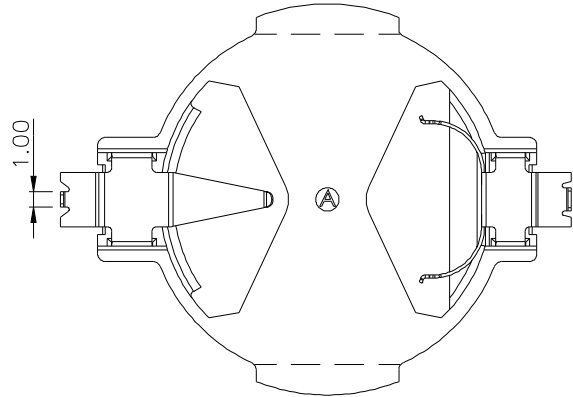
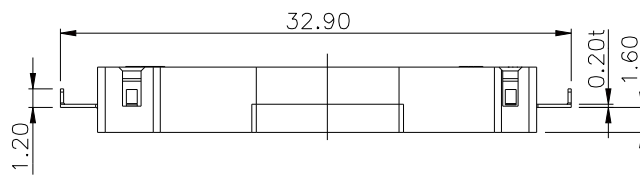
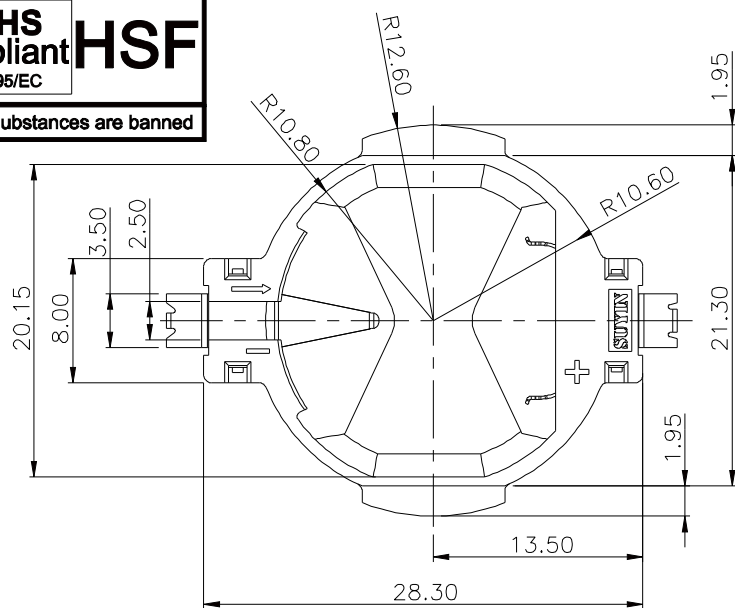


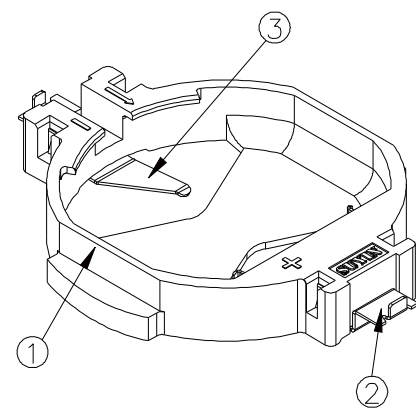
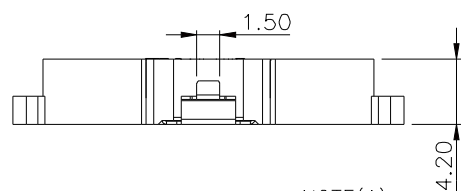
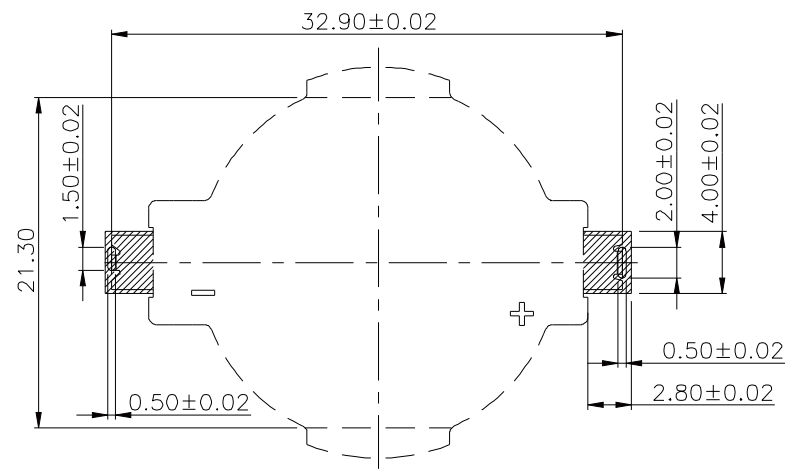


RoHS Compliant
2002/95/EC

Level-1 Controlled Substances are banned



RECOMMENDED P.C.B LAYOUT (COMPONENT SIDE)
P.C.B THICKNESS=1.40mm
WITHOUT LOCKING FUNCTION



NOTE(1) :
060003FA002 GX_08NL
1.PLATING 1
G1 -5u" GOLD OVER NICKEL.
"G2,-GOLD FLASH OVER 30u" MIN NICKEL.
G3 -10u" GOLD OVER NICKEL.
G4 -15u" GOLD OVER NICKEL.
G5 -30u" GOLD OVER NICKEL.

NO.	DESCRIPTION	MATERIAL	COLOR	REMARK
3	TERMINAL	COPPER ALLOY	—	GOLD PLATED
2	TERMINAL	COPPER ALLOY	—	GOLD PLATED
1	PLASTICS	HIGH TEMP PLASTICS	WHITE	UL94V-0

SUYIN
CONNECTOR

CUSTOMER COPY	TITLE: FOR CR2032 BATTERY CONN.			
PART NO.	060003FA002GX08NL			
PRODUCT SPEC.	060003FAXXXX08XX			
FILE NAME.	D	060003FA002GX08NL-C		
SCALE	2:1	UNIT:mm	A4	SHEET: 1 of 2

ECN(DCN) NO.	REV	DATE	DESCRIPTION	CHANGE	APPRO.	GENERAL TOLERANCE UNLESS OTHERWISE NOTED	APPRO.
	0		NEW RELEASE	涂冰	許俊賢	Angle 30 ~ ±0.50	DRAW
DCB-071023-10	PA	07'/10/23	PA1:變更結構.	劉嫻娜	鄭家奇	10 ~ 30 ±0.30	DESIGN
	PO	07'/09/13	NEW	劉嫻娜	許俊賢	~ 10 ±0.15	CHECK
							APPRO.