



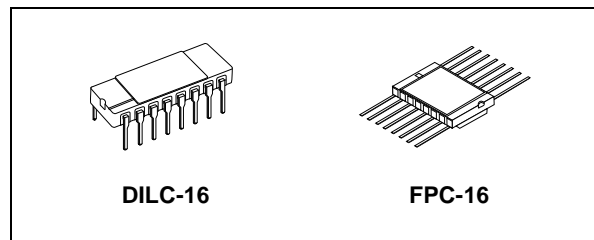
M54HC251

RAD-HARD 8-CHANNEL MULTIPLEXER (3-STATE)

- HIGH SPEED:
 $t_{PD} = 17 \text{ ns (TYP.) at } V_{CC} = 6V$
- LOW POWER DISSIPATION:
 $I_{CC} = 4\mu\text{A (MAX.) at } T_A = 25^\circ\text{C}$
- HIGH NOISE IMMUNITY:
 $V_{NIH} = V_{NIL} = 28\% V_{CC} \text{ (MIN.)}$
- SYMMETRICAL OUTPUT IMPEDANCE:
 $|I_{OH}| = I_{OL} = 4\text{mA (MIN.)}$
- BALANCED PROPAGATION DELAYS:
 $t_{PLH} \cong t_{PHL}$
- WIDE OPERATING VOLTAGE RANGE:
 $V_{CC} \text{ (OPR)} = 2V \text{ to } 6V$
- PIN AND FUNCTION COMPATIBLE WITH
 54 SERIES 251
- SPACE GRADE-1: ESA SCC QUALIFIED
- 50 krad QUALIFIED, 100 krad AVAILABLE ON
 REQUEST
- NO SEL UNDER HIGH LET HEAVY IONS
 IRRADIATION
- DEVICE FULLY COMPLIANT WITH
 SCC-9408-048

DESCRIPTION

The M54HC251 is an high speed CMOS 8-CHANNEL MULTIPLEXER (3-STATE) fabricated with silicon gate C²MOS technology.

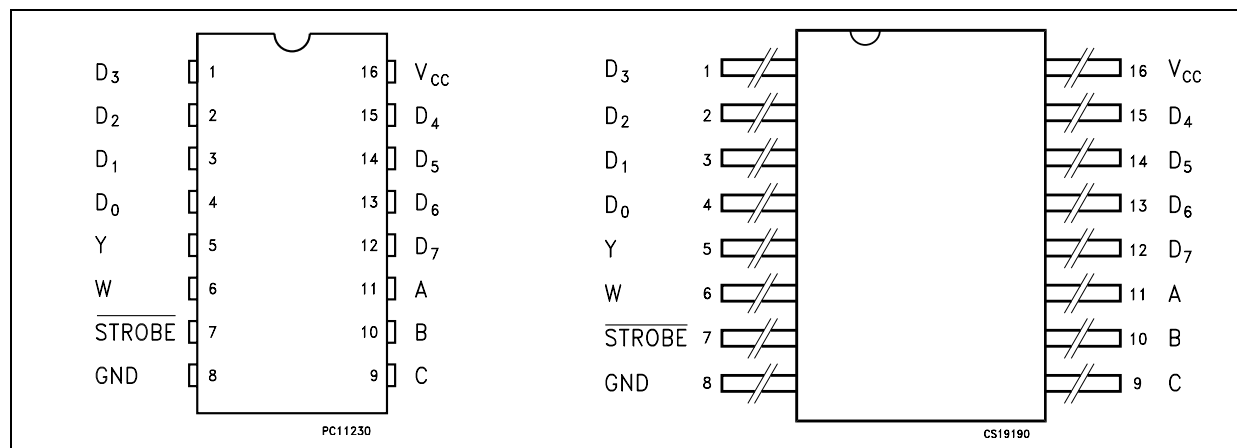


ORDER CODES

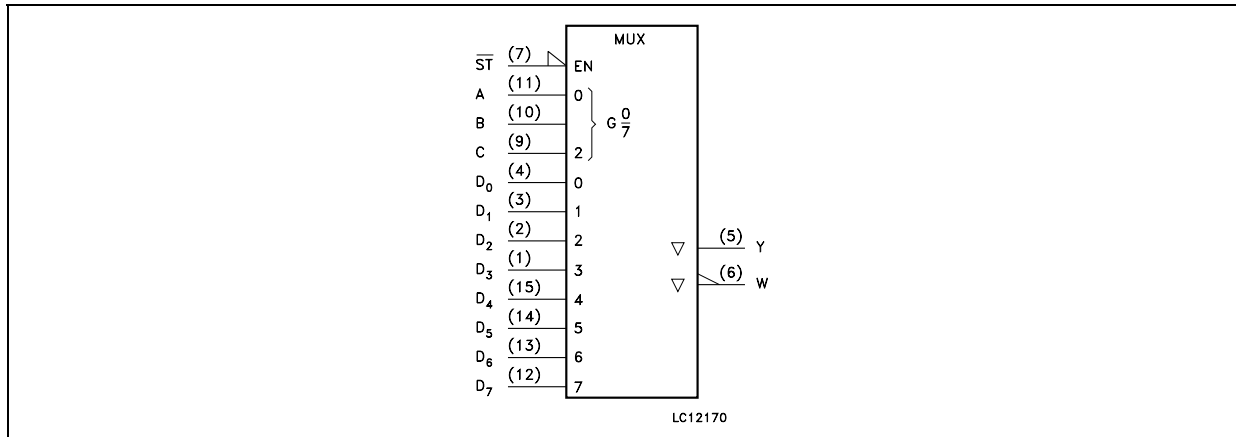
| PACKAGE | FM | EM |
|---------|-----------|------------|
| DILC | M54HC251D | M54HC251D1 |
| FPC | M54HC251K | M54HC251K1 |

This Multiplexer features both true (Y) and complement (W) outputs as well as STROBE input. When the STROBE is high, both outputs are in the high impedance state. When enabled, address information on the data select inputs determines which data input is routed to Y and W. All inputs are equipped with protection circuits against static discharge and transient excess voltage.

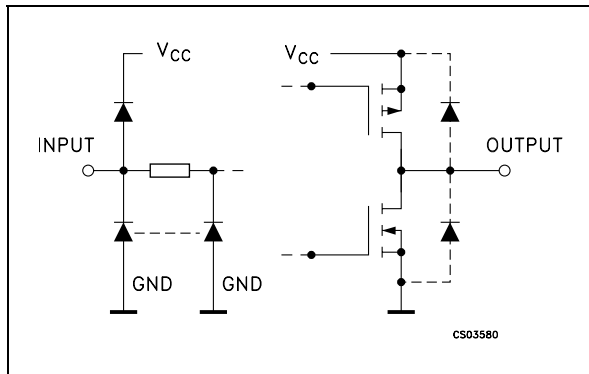
PIN CONNECTION



IEC LOGIC SYMBOLS



INPUT AND OUTPUT EQUIVALENT CIRCUIT



PIN DESCRIPTION

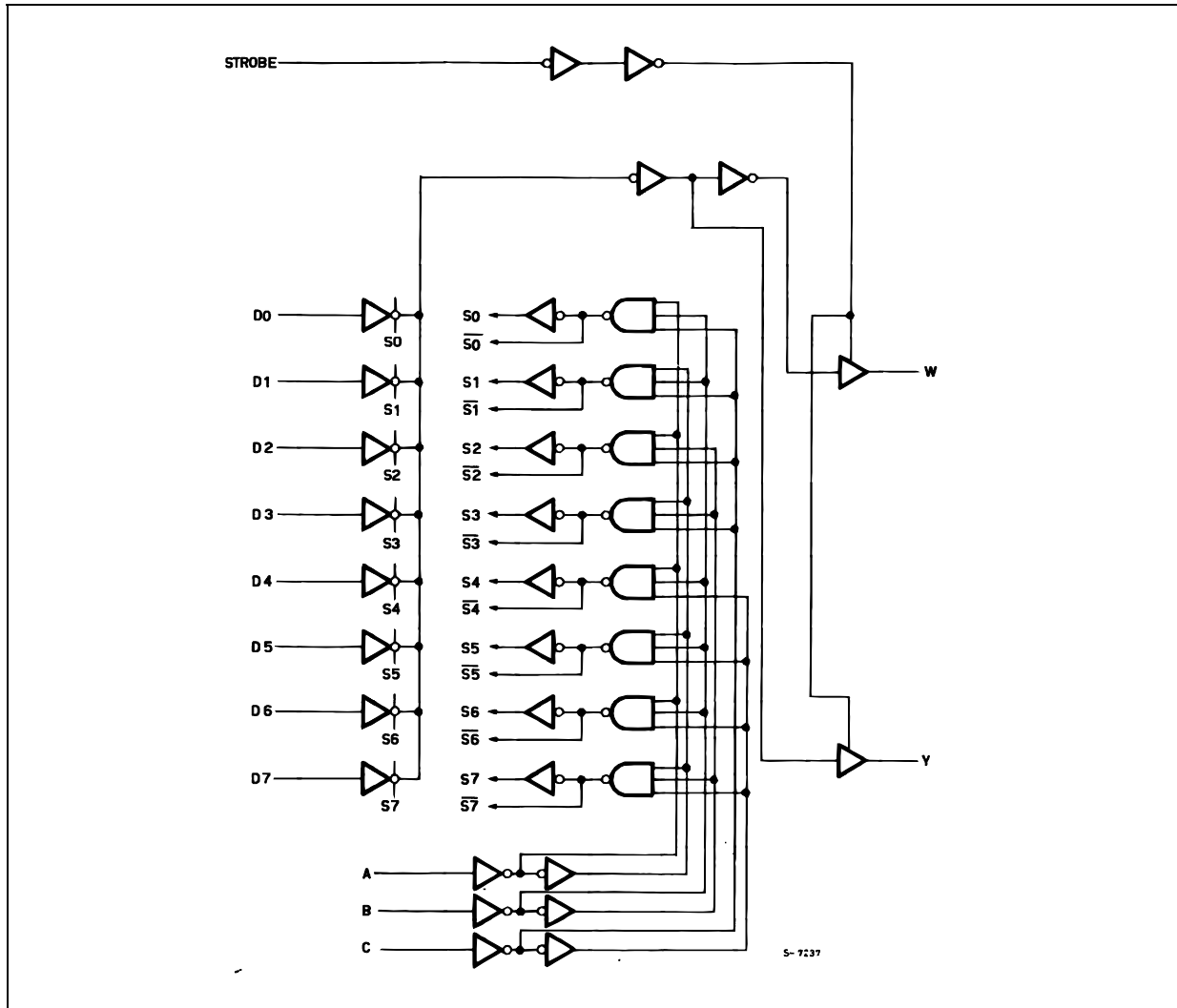
| PIN N° | SYMBOL | NAME AND FUNCTION |
|----------------------------|----------------------------|----------------------------------|
| 4, 3, 2, 1, 15, 14, 13, 12 | D0 to D7 | Multiplexer Inputs |
| 5 | Y | Multiplexer Output |
| 6 | W | Complementary Multiplexer Output |
| 7 | $\overline{\text{STROBE}}$ | 3 State Output Enable Input |
| 11, 10, 9 | A, B, C | Select Inputs |
| 8 | GND | Ground (0V) |
| 16 | V _{CC} | Positive Supply Voltage |

TRUTH TABLE

| INPUTS | | | $\overline{\text{STROBE}}$ | OUTPUTS | |
|--------|---|---|----------------------------|---------|----|
| C | B | A | | Y | W |
| X | X | X | H | Z | Z |
| L | L | L | L | D0 | D0 |
| L | L | H | L | D1 | D1 |
| L | H | L | L | D2 | D2 |
| L | H | H | L | D3 | D3 |
| H | L | L | L | D4 | D4 |
| H | L | H | L | D5 | D5 |
| H | H | L | L | D6 | D6 |
| H | H | H | L | D7 | D7 |

X : Don't Care
Z : High Impedance

LOGIC DIAGRAM



This logic diagram has not be used to estimate propagation delays

ABSOLUTE MAXIMUM RATINGS

| Symbol | Parameter | Value | Unit |
|-----------------------|-------------------------------|------------------------|-------------|
| V_{CC} | Supply Voltage | -0.5 to +7 | V |
| V_I | DC Input Voltage | -0.5 to $V_{CC} + 0.5$ | V |
| V_O | DC Output Voltage | -0.5 to $V_{CC} + 0.5$ | V |
| I_{IK} | DC Input Diode Current | ± 20 | mA |
| I_{OK} | DC Output Diode Current | ± 20 | mA |
| I_O | DC Output Current | ± 25 | mA |
| I_{CC} or I_{GND} | DC V_{CC} or Ground Current | ± 50 | mA |
| P_D | Power Dissipation | 300 | mW |
| T_{stg} | Storage Temperature | -65 to +150 | $^{\circ}C$ |
| T_L | Lead Temperature (10 sec) | 265 | $^{\circ}C$ |

Absolute Maximum Ratings are those values beyond which damage to the device may occur. Functional operation under these conditions is not implied

RECOMMENDED OPERATING CONDITIONS

| Symbol | Parameter | Value | Unit | |
|------------|--------------------------|-----------------|-----------|----|
| V_{CC} | Supply Voltage | 2 to 6 | V | |
| V_I | Input Voltage | 0 to V_{CC} | V | |
| V_O | Output Voltage | 0 to V_{CC} | V | |
| T_{op} | Operating Temperature | -55 to 125 | °C | |
| t_r, t_f | Input Rise and Fall Time | $V_{CC} = 2.0V$ | 0 to 1000 | ns |
| | | $V_{CC} = 4.5V$ | 0 to 500 | ns |
| | | $V_{CC} = 6.0V$ | 0 to 400 | ns |

DC SPECIFICATIONS

| Symbol | Parameter | Test Condition | | Value | | | | | | Unit | |
|----------|---------------------------------------|-----------------|--|--------------------|------|-----------|------------------------------|---------|-------------------------------|----------|---------|
| | | V_{CC} (V) | | $T_A = 25^\circ C$ | | | $-40 \text{ to } 85^\circ C$ | | $-55 \text{ to } 125^\circ C$ | | |
| | | | | Min. | Typ. | Max. | Min. | Max. | Min. | | Max. |
| V_{IH} | High Level Input Voltage | 2.0 | | 1.5 | | | 1.5 | | 1.5 | | V |
| | | 4.5 | | 3.15 | | | 3.15 | | 3.15 | | |
| | | 6.0 | | 4.2 | | | 4.2 | | 4.2 | | |
| V_{IL} | Low Level Input Voltage | 2.0 | | | | 0.5 | | 0.5 | | 0.5 | V |
| | | 4.5 | | | | 1.35 | | 1.35 | | 1.35 | |
| | | 6.0 | | | | 1.8 | | 1.8 | | 1.8 | |
| V_{OH} | High Level Output Voltage | 2.0 | $I_O = -20 \mu A$ | 1.9 | 2.0 | | 1.9 | | 1.9 | | V |
| | | 4.5 | $I_O = -20 \mu A$ | 4.4 | 4.5 | | 4.4 | | 4.4 | | |
| | | 6.0 | $I_O = -20 \mu A$ | 5.9 | 6.0 | | 5.9 | | 5.9 | | |
| | | 4.5 | $I_O = -4.0 \text{ mA}$ | 4.18 | 4.31 | | 4.13 | | 4.10 | | |
| | | 6.0 | $I_O = -5.2 \text{ mA}$ | 5.68 | 5.8 | | 5.63 | | 5.60 | | |
| V_{OL} | Low Level Output Voltage | 2.0 | $I_O = 20 \mu A$ | | 0.0 | 0.1 | | 0.1 | | 0.1 | V |
| | | 4.5 | $I_O = 20 \mu A$ | | 0.0 | 0.1 | | 0.1 | | 0.1 | |
| | | 6.0 | $I_O = 20 \mu A$ | | 0.0 | 0.1 | | 0.1 | | 0.1 | |
| | | 4.5 | $I_O = 4.0 \text{ mA}$ | | 0.17 | 0.26 | | 0.33 | | 0.40 | |
| | | 6.0 | $I_O = 5.2 \text{ mA}$ | | 0.18 | 0.26 | | 0.33 | | 0.40 | |
| I_I | Input Leakage Current | 6.0 | $V_I = V_{CC} \text{ or GND}$ | | | ± 0.1 | | ± 1 | | ± 1 | μA |
| I_{OZ} | High Impedance Output Leakage Current | 6.0 | $V_I = V_{IH} \text{ or } V_{IL}$ $V_O = V_{CC} \text{ or GND}$ | | | ± 0.5 | | ± 5 | | ± 10 | μA |
| I_{CC} | Quiescent Supply Current | 6.0 | $V_I = V_{CC} \text{ or GND}$ | | | 4 | | 40 | | 80 | μA |

AC ELECTRICAL CHARACTERISTICS ($C_L = 50 \text{ pF}$, Input $t_r = t_f = 6 \text{ ns}$)

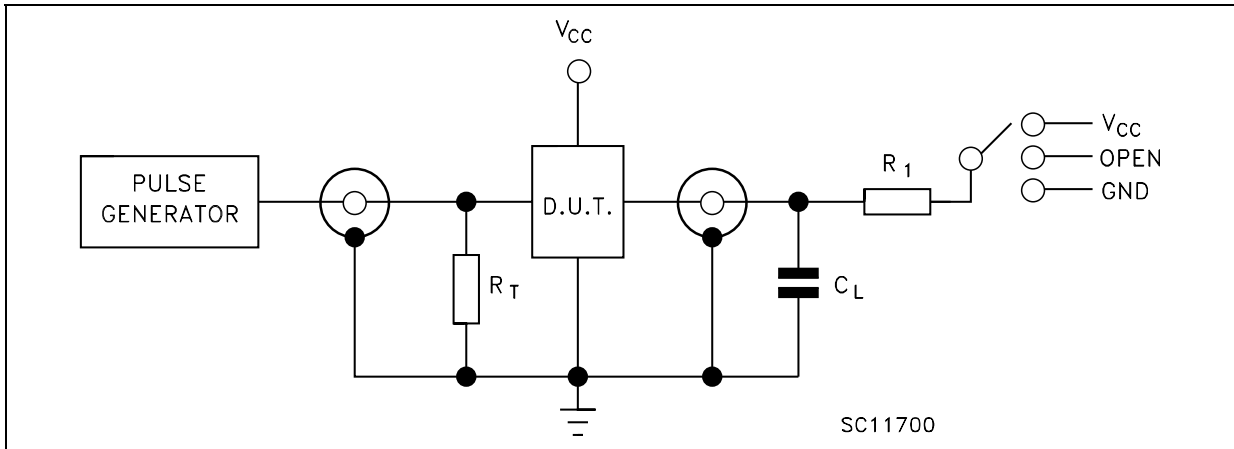
| Symbol | Parameter | Test Condition | | Value | | | | | | Unit | |
|---------------------|---|-----------------|---------------------------|--------------------------|------|------|------------------------------------|------|-------------------------------------|------|------|
| | | V_{CC} (V) | | $T_A = 25^\circ\text{C}$ | | | $-40 \text{ to } 85^\circ\text{C}$ | | $-55 \text{ to } 125^\circ\text{C}$ | | |
| | | | | Min. | Typ. | Max. | Min. | Max. | Min. | | Max. |
| t_{TLH} t_{THL} | Output Transition Time | 2.0 | | | 30 | 75 | | 95 | | 115 | ns |
| | | 4.5 | | | 8 | 15 | | 19 | | 23 | |
| | | 6.0 | | | 7 | 13 | | 16 | | 20 | |
| t_{PLH} t_{PHL} | Propagation Delay Time (D - Y, W) | 2.0 | | | 64 | 130 | | 165 | | 195 | ns |
| | | 4.5 | | | 16 | 26 | | 33 | | 39 | |
| | | 6.0 | | | 14 | 22 | | 28 | | 33 | |
| t_{PHL} | Propagation Delay Time (A, B, C -Y, W) | 2.0 | | | 80 | 160 | | 200 | | 240 | ns |
| | | 4.5 | | | 20 | 32 | | 40 | | 48 | |
| | | 6.0 | | | 17 | 27 | | 34 | | 41 | |
| t_{PZL} t_{PZH} | High Impedance Output Enable Time | 2.0 | $R_L = 1 \text{ K}\Omega$ | | 36 | 90 | | 115 | | 135 | ns |
| | | 4.5 | | | 11 | 18 | | 23 | | 27 | |
| | | 6.0 | | | 9 | 15 | | 20 | | 23 | |
| t_{PLZ} t_{PHZ} | High Impedance Output Disable Time | 2.0 | $R_L = 1 \text{ K}\Omega$ | | 26 | 85 | | 105 | | 130 | ns |
| | | 4.5 | | | 13 | 17 | | 21 | | 26 | |
| | | 6.0 | | | 11 | 14 | | 18 | | 22 | |

CAPACITIVE CHARACTERISTICS

| Symbol | Parameter | Test Condition | | Value | | | | | | Unit | |
|----------|---|-----------------|--|--------------------------|------|------|------------------------------------|------|-------------------------------------|------|------|
| | | V_{CC} (V) | | $T_A = 25^\circ\text{C}$ | | | $-40 \text{ to } 85^\circ\text{C}$ | | $-55 \text{ to } 125^\circ\text{C}$ | | |
| | | | | Min. | Typ. | Max. | Min. | Max. | Min. | | Max. |
| C_{IN} | Input Capacitance | 5.0 | | | 5 | 10 | | 10 | | 10 | pF |
| C_{PD} | Power Dissipation Capacitance (note 1) | 5.0 | | | 62 | | | | | | pF |

1) C_{PD} is defined as the value of the IC's internal equivalent capacitance which is calculated from the operating current consumption without load. (Refer to Test Circuit). Average operating current can be obtained by the following equation. $I_{CC(oper)} = C_{PD} \times V_{CC} \times f_{IN} + I_{CC}$

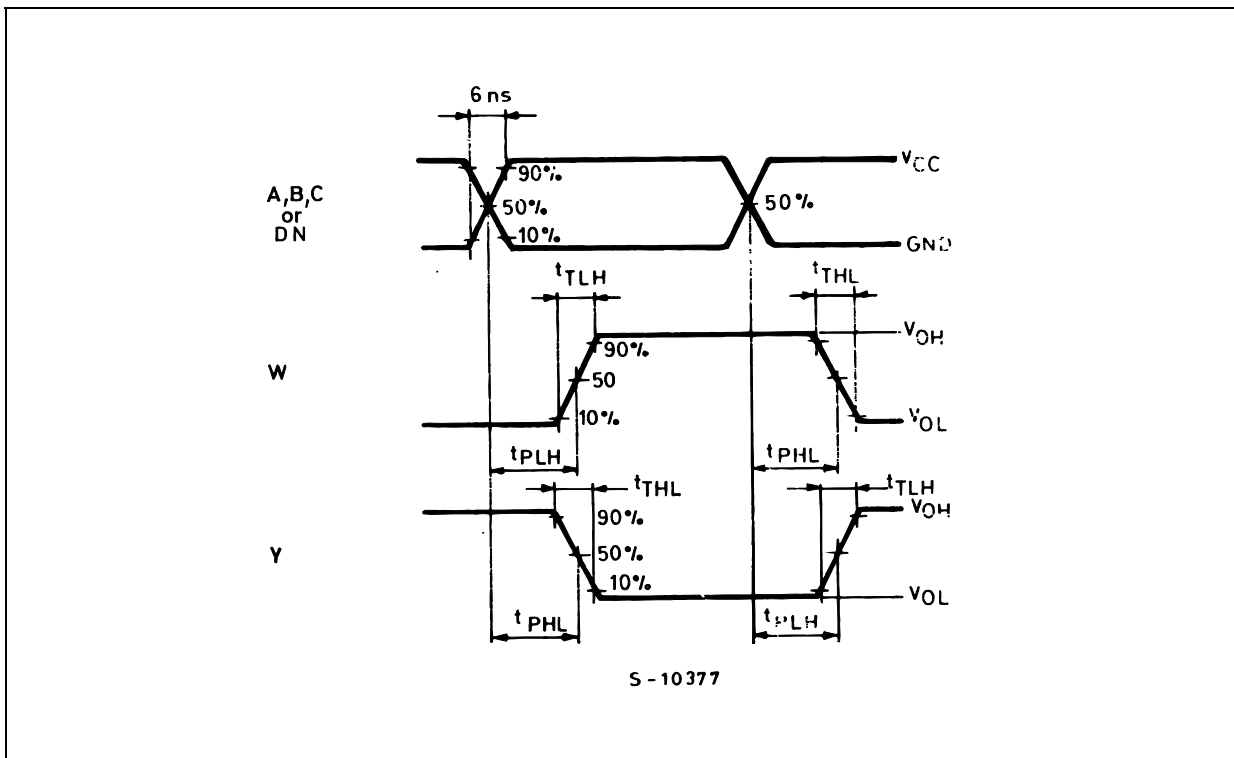
TEST CIRCUIT



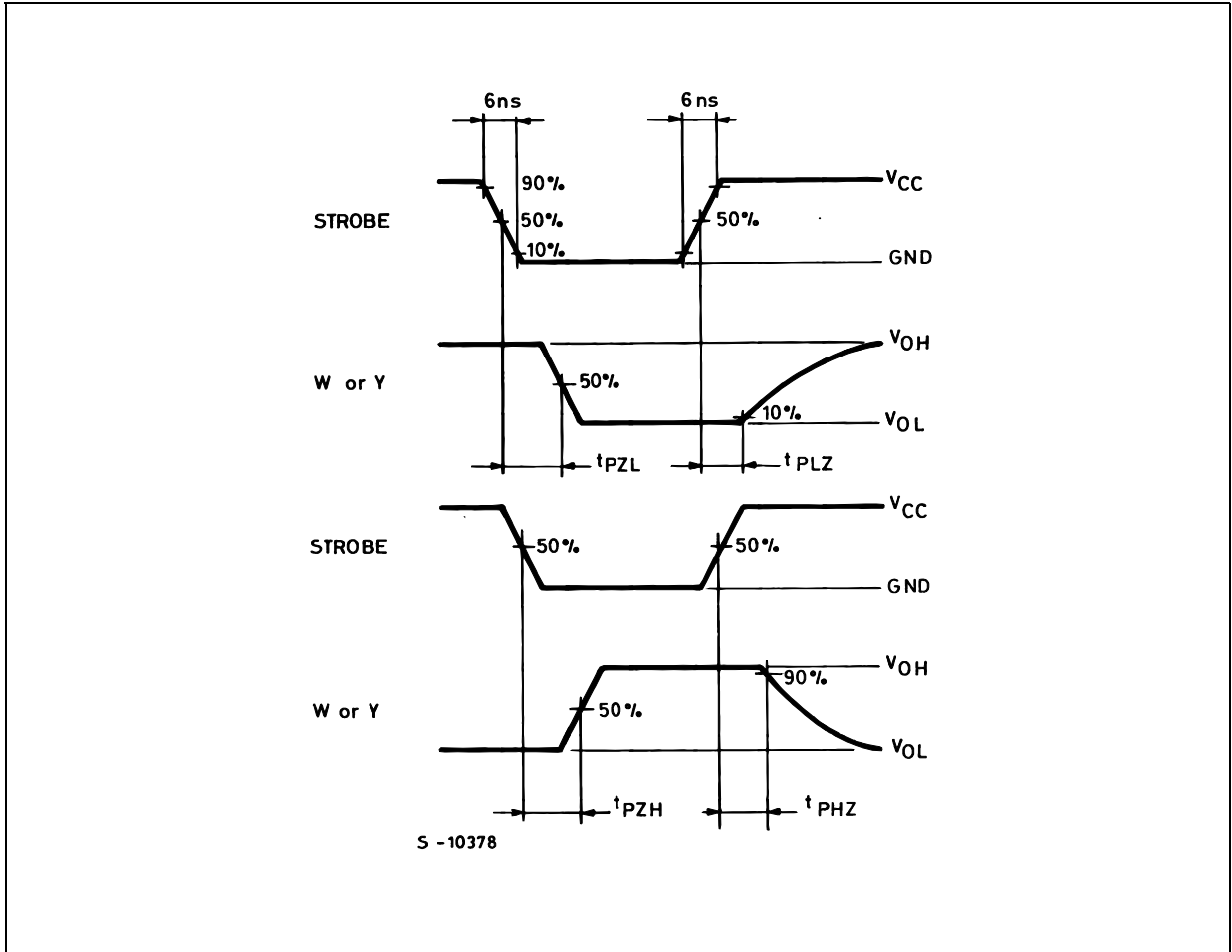
| TEST | SWITCH |
|-----------------------|----------|
| t_{PLH} , t_{PHL} | Open |
| t_{PZL} , t_{PLZ} | V_{CC} |
| t_{PZH} , t_{PHZ} | GND |

$C_L = 50\text{pF}/150\text{pF}$ or equivalent (includes jig and probe capacitance)
 $R_1 = 1\text{K}\Omega$ or equivalent
 $R_T = Z_{OUT}$ of pulse generator (typically 50Ω)

WAVEFORM 1: PROPAGATION DELAY TIME ($f=1\text{MHz}$; 50% duty cycle)

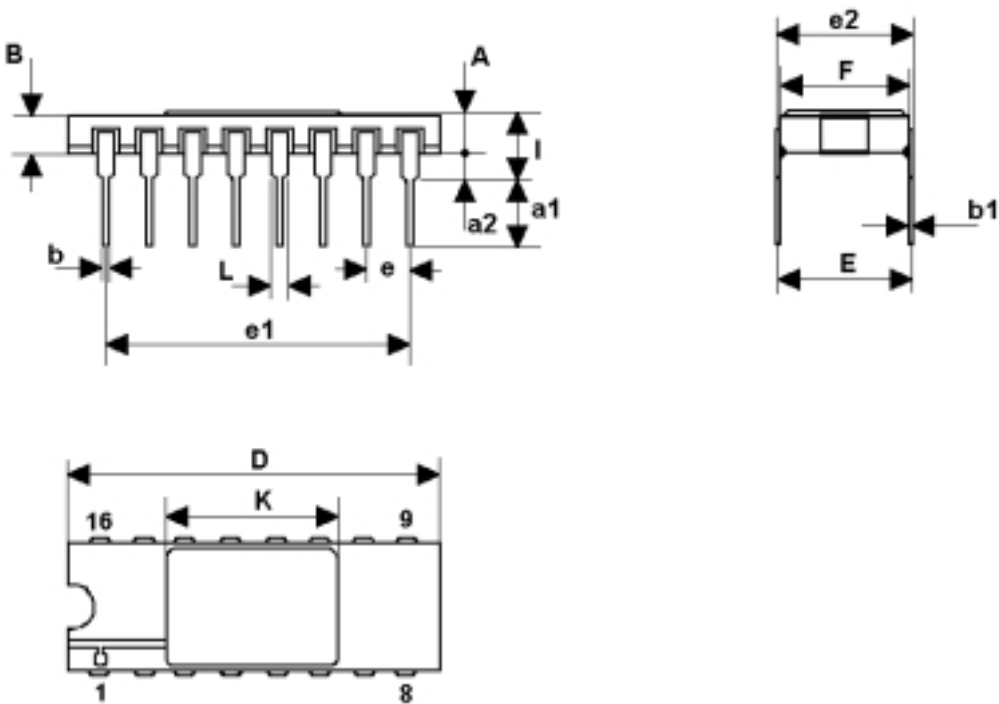


WAVEFORM 2: OUTPUT ENABLE AND DISABLE TIME (f=1MHz; 50% duty cycle)



DILC-16 MECHANICAL DATA

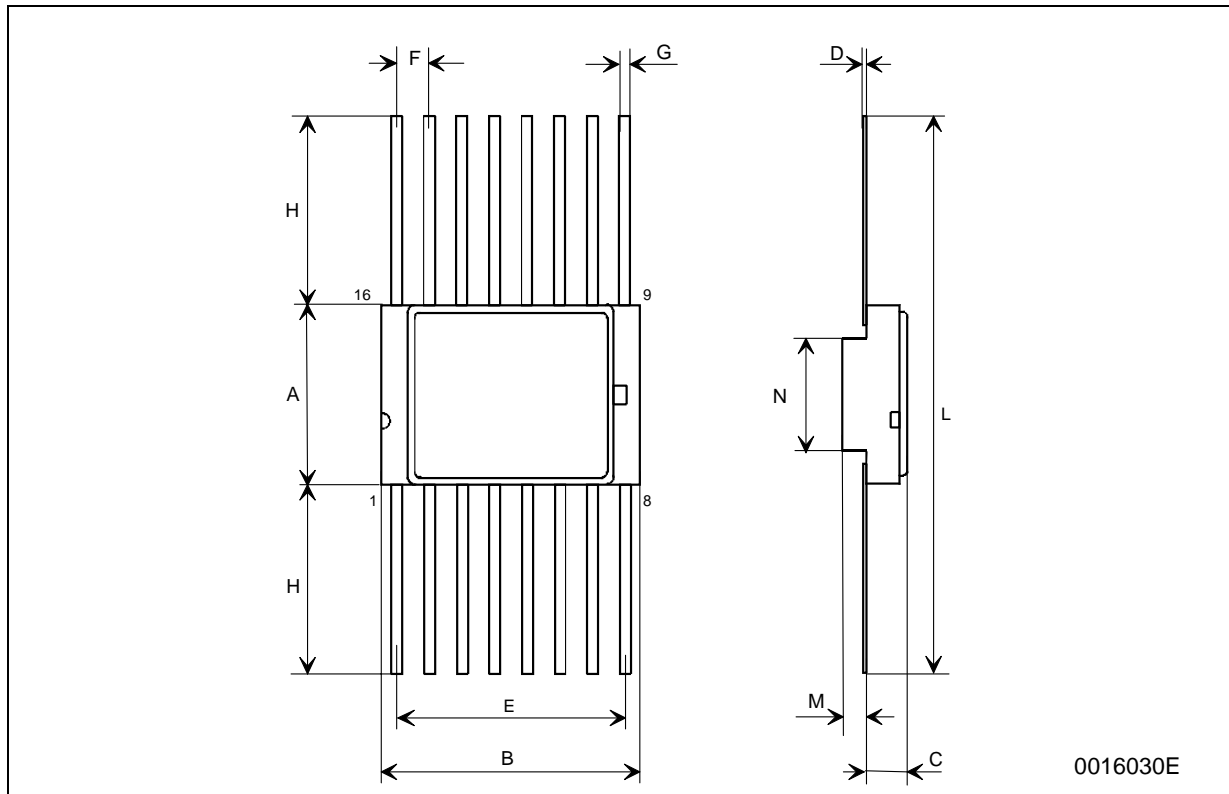
| DIM. | mm. | | | inch | | |
|------|-------|-------|-------|-------|-------|-------|
| | MIN. | TYP | MAX. | MIN. | TYP. | MAX. |
| A | 2.1 | | 2.71 | 0.083 | | 0.107 |
| a1 | 3.00 | | 3.70 | 0.118 | | 0.146 |
| a2 | 0.63 | 0.88 | 1.14 | 0.025 | 0.035 | 0.045 |
| B | 1.82 | | 2.39 | 0.072 | | 0.094 |
| b | 0.40 | 0.45 | 0.50 | 0.016 | 0.018 | 0.020 |
| b1 | 0.20 | 0.254 | 0.30 | 0.008 | 0.010 | 0.012 |
| D | 20.06 | 20.32 | 20.58 | 0.790 | 0.800 | 0.810 |
| e | 7.36 | 7.62 | 7.87 | 0.290 | 0.300 | 0.310 |
| e1 | | 2.54 | | | 0.100 | |
| e2 | 17.65 | 17.78 | 17.90 | 0.695 | 0.700 | 0.705 |
| e3 | 7.62 | 7.87 | 8.12 | 0.300 | 0.310 | 0.320 |
| F | 7.29 | 7.49 | 7.70 | 0.287 | 0.295 | 0.303 |
| I | | | 3.83 | | | 0.151 |
| K | 10.90 | | 12.1 | 0.429 | | 0.476 |
| L | 1.14 | | 1.5 | 0.045 | | 0.059 |



0056437F

| |
|-------------------------------|
| FPC-16 MECHANICAL DATA |
|-------------------------------|

| DIM. | mm. | | | inch | | |
|------|-------|-------|-------|-------|-------|-------|
| | MIN. | TYP | MAX. | MIN. | TYP. | MAX. |
| A | 6.75 | 6.91 | 7.06 | 0.266 | 0.272 | 0.278 |
| B | 9.76 | 9.94 | 10.14 | 0.384 | 0.392 | 0.399 |
| C | 1.49 | | 1.95 | 0.059 | | 0.077 |
| D | 0.102 | 0.127 | 0.152 | 0.004 | 0.005 | 0.006 |
| E | 8.76 | 8.89 | 9.01 | 0.345 | 0.350 | 0.355 |
| F | | 1.27 | | | 0.050 | |
| G | 0.38 | 0.43 | 0.48 | 0.015 | 0.017 | 0.019 |
| H | 6.0 | | | 0.237 | | |
| L | 18.75 | | 22.0 | 0.738 | | 0.867 |
| M | 0.33 | 0.38 | 0.43 | 0.013 | 0.015 | 0.017 |
| N | | 4.31 | | | 0.170 | |



Information furnished is believed to be accurate and reliable. However, STMicroelectronics assumes no responsibility for the consequences of use of such information nor for any infringement of patents or other rights of third parties which may result from its use. No license is granted by implication or otherwise under any patent or patent rights of STMicroelectronics. Specifications mentioned in this publication are subject to change without notice. This publication supersedes and replaces all information previously supplied. STMicroelectronics products are not authorized for use as critical components in life support devices or systems without express written approval of STMicroelectronics.

The ST logo is a registered trademark of STMicroelectronics
All other names are the property of their respective owners

© 2004 STMicroelectronics - All Rights Reserved
STMicroelectronics GROUP OF COMPANIES

Australia - Belgium - Brazil - Canada - China - Czech Republic - Finland - France - Germany - Hong Kong - India - Israel - Italy - Japan -
Malaysia - Malta - Morocco - Singapore - Spain - Sweden - Switzerland - United Kingdom - United States.

<http://www.st.com>