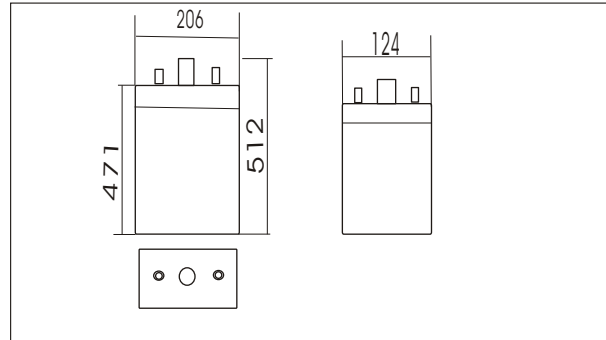




# 50PzV350 (2V350Ah)



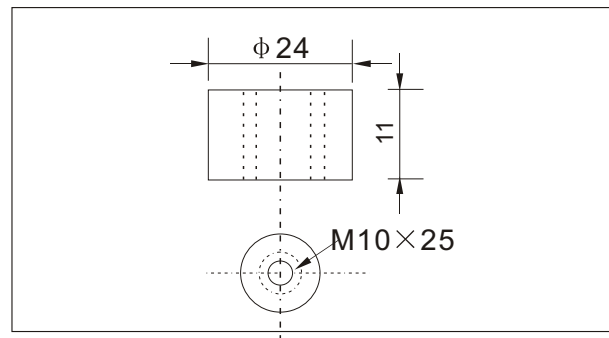
## Outer dimensions (mm)



## Specifications

Nominal Voltage		2 V
Rated capacity (10 hour rate)		350 Ah
Dimensions	Total Height	512 mm ( 20.2 Inches)
	Height	471mm (18.54inches)
	Length	124 mm (4.88 inches)
	Width	206 mm (8.11inches)
Weight Approx		29Kg (63.8lbs)

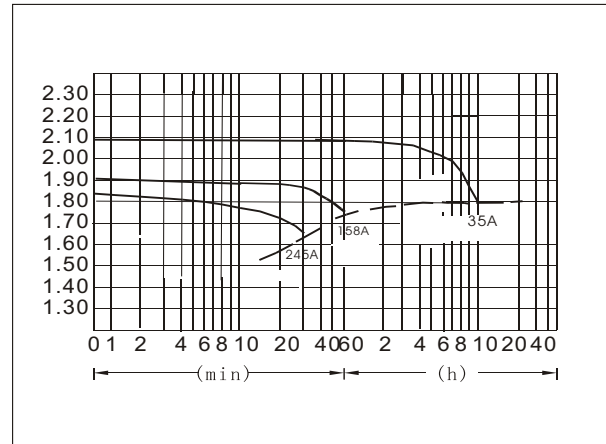
## Terminal Type (mm)



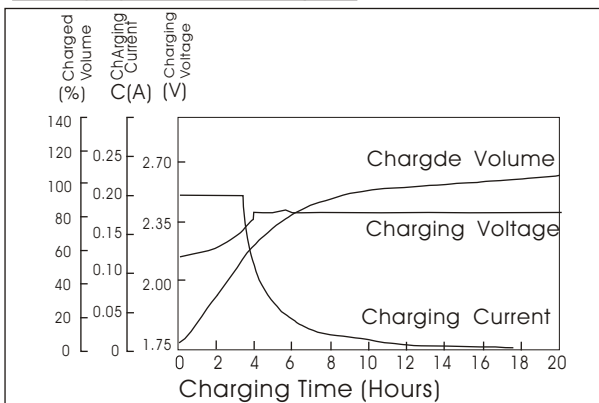
## Characteristics

Capacity 25°C(77°F)	10 hour rate(35A)	350AH
	1 hour rate(158A)	158 AH
	0.5 hour rate(245A)	122.5AH
Capacity affected by Temperature (10hour rate)	40°C(104°F)	102%
	25°C(77°F)	100%
	0°C(32°F)	85%
	-15°C(5°F)	65%
Self-Discharge at 25°C(77°F)	Capacity after 3 month storage	91%
	Capacity after 6 month storage	82%
	Capacity after 12 month storage	64%
Terminal quantity	2	
Charge (constant Voltage)	Initial Charging Current less than 70.0A Voltage 2.25-2.40V	

## Discharge Curves 25°C(77°F)



## Charging characteristics(25°C)



## Cycling Curves

