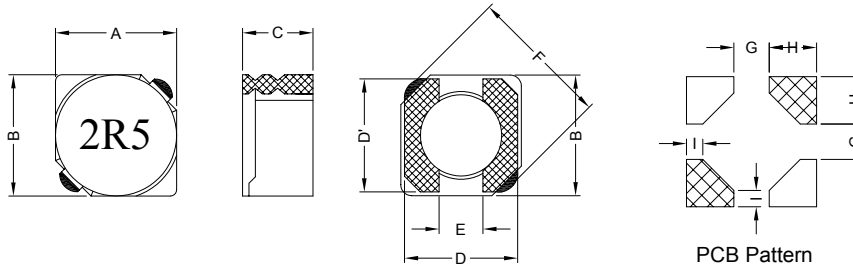


1. PART NO. EXPRESSION :

SSC05032R5YZF
 (a) (b) (c) (d)(e)(f)

- (a) Series code
- (b) Dimension code
- (c) Inductance code : 2R5 = 2.5uH
- (d) Tolerance code : Y = ±30%
- (e) X, Y, Z : Standard part
- (f) F : Lead Free

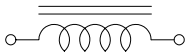
2. CONFIGURATION & DIMENSIONS :



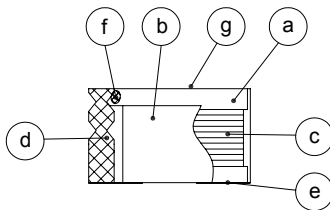
Unit : m/m

| A | B | C | D | D' | E | F | G | H | I |
|----------|----------|-----------|-----------|-----------|-----------|-----------|-----------|-----------|-----------|
| 5.70±0.3 | 5.70±0.3 | 3.00 Max. | 5.50 Ref. | 5.50 Ref. | 2.00 Ref. | 8.20 Max. | 2.20 Ref. | 2.05 Ref. | 0.85 Ref. |

3. SCHEMATIC :



4. MATERIALS :



- (a) Core : DR Ferrite Core
- (b) Core : RI Ferrite Core
- (c) Wire : Enamelled Copper Wire
- (d) Terminal : Au+Ni Copper Plate
- (e) Adhesive : Epoxy
- (f) Adhesive : Epoxy
- (g) Ink : Bon Margue

5. GENERAL SPECIFICATION :

- a) Temp. rise : 30°C Typ. at rated current
- b) Rated current : Base on temp. rise & ΔL/L0A = 35% Typ.
- c) Storage temp. : -40°C to +125°C
- d) Operating temp. : -40°C to +95°C
- e) Resistance to solder heat : 260°C.10 secs



RoHS Compliant

NOTE : Specifications subject to change without notice. Please check our website for latest information.

05.08.2008



SUPERWORLD ELECTRONICS (S) PTE LTD

6. ELECTRICAL CHARACTERISTICS :

| Part No. | Inductance (μ H) | Test Frequency (Hz) | RDC (m Ω) Max. | IDC (A) Max. |
|---------------|--------------------------|---------------------------|------------------------------|--------------------|
| SSC05032R5YZF | 2.5 \pm 30% | 0.5V / 10K | 18 | 2.60 |
| SSC05033R0YZF | 3.0 \pm 30% | 0.5V / 10K | 24 | 2.40 |
| SSC05034R2YZF | 4.2 \pm 30% | 0.5V / 10K | 31 | 2.20 |
| SSC05035R3YZF | 5.3 \pm 30% | 0.5V / 10K | 38 | 1.90 |
| SSC05036R2YZF | 6.2 \pm 30% | 0.5V / 10K | 45 | 1.80 |
| SSC05038R2YZF | 8.2 \pm 30% | 0.5V / 10K | 53 | 1.60 |
| SSC0503100YZF | 10.0 \pm 30% | 0.5V / 10K | 65 | 1.30 |
| SSC0503120YZF | 12.0 \pm 30% | 0.5V / 10K | 76 | 1.20 |
| SSC0503150YZF | 15.0 \pm 30% | 0.5V / 10K | 103 | 1.10 |
| SSC0503180YZF | 18.0 \pm 30% | 0.5V / 10K | 110 | 1.00 |
| SSC0503220YZF | 22.0 \pm 30% | 0.5V / 10K | 122 | 0.90 |
| SSC0503270YZF | 27.0 \pm 30% | 0.5V / 10K | 175 | 0.85 |
| SSC0503330YZF | 33.0 \pm 30% | 0.5V / 10K | 189 | 0.75 |
| SSC0503390YZF | 39.0 \pm 30% | 0.5V / 10K | 212 | 0.70 |
| SSC0503470YZF | 47.0 \pm 30% | 0.5V / 10K | 250 | 0.62 |
| SSC0503560YZF | 56.0 \pm 30% | 0.5V / 10K | 305 | 0.58 |
| SSC0503680YZF | 68.0 \pm 30% | 0.5V / 10K | 355 | 0.52 |
| SSC0503820YZF | 82.0 \pm 30% | 0.5V / 10K | 463 | 0.46 |
| SSC0503101YZF | 100.0 \pm 30% | 0.5V / 10K | 520 | 0.42 |



RoHS Compliant

NOTE : Specifications subject to change without notice. Please check our website for latest information.

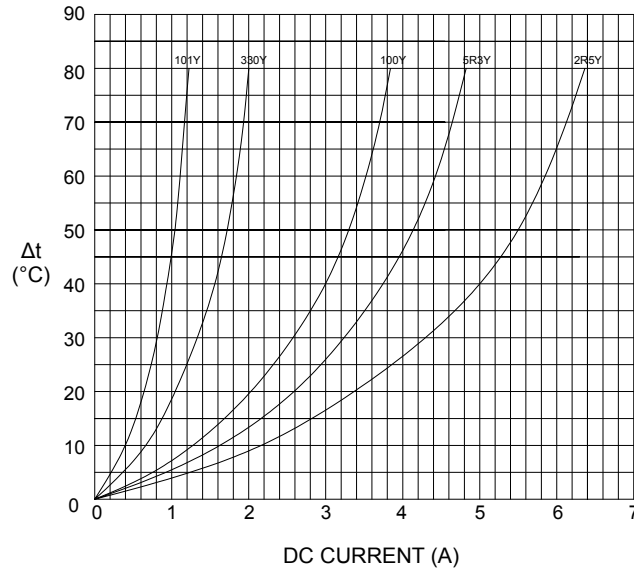
05.08.2008



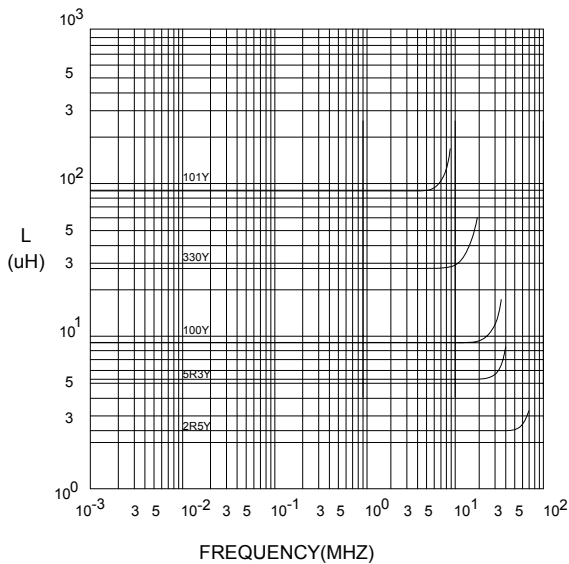
SUPERWORLD ELECTRONICS (S) PTE LTD

7. CHARACTERISTICS CURVES :

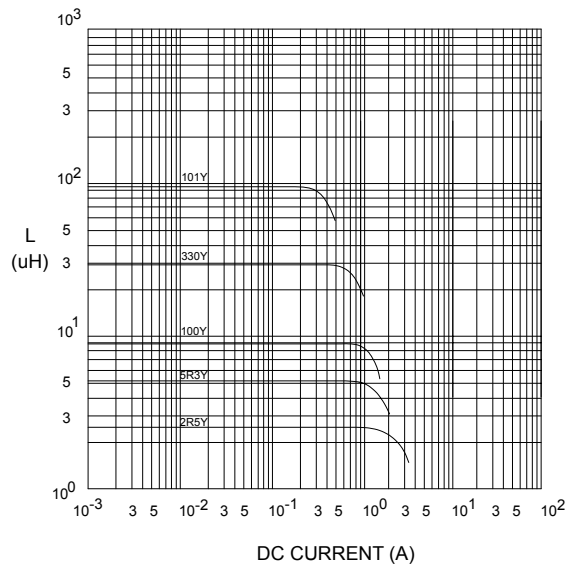
@ TEMP. RISE VS. DC SUPERPOSITION RESPONSE CURVE



@ INDUCTANCE VS. FREQUENCY RESPONSE CURVE



@ INDUCTANCE VS. DC SUPERPOSITION RESPONSE CURVE



NOTE : Specifications subject to change without notice. Please check our website for latest information.



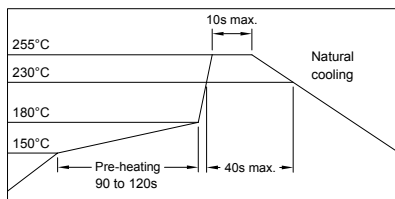
RoHS Compliant

05.08.2008



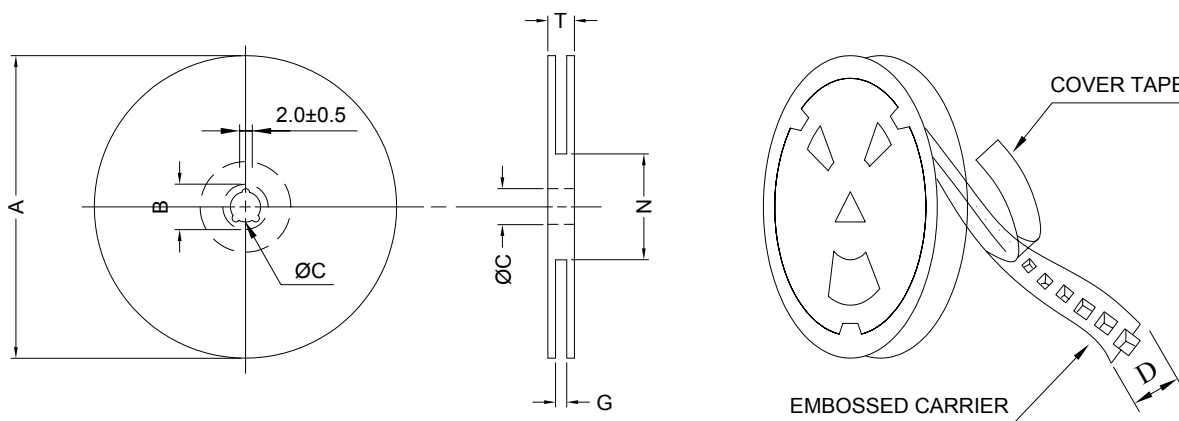
SUPERWORLD ELECTRONICS (S) PTE LTD

RECOMMENDED SOLDERING CONDITIONS REFLOW SOLDERINGS

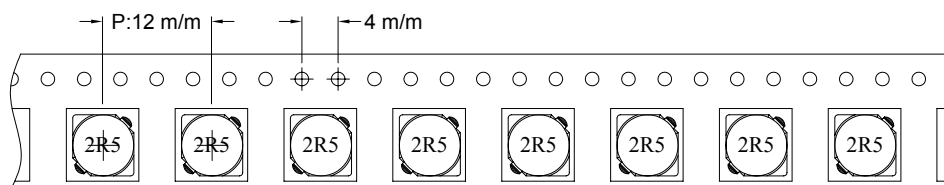


8. PACKAGING INFORMATION :

(1) CONFIGURATION



* CARRIER TAPE WIDTH : D



(2) DIMENSIONS

Unit:m/m

| STYLE | A | B | C | D | G | N | T |
|-------|-----|--------|----|----|------------------|------------------|------|
| 13-16 | 330 | 21±0.8 | 13 | 16 | 18 ⁺⁰ | 50 ⁻⁰ | 22.4 |

(3) Q'TY & G.W. PER PACKAGE

| SERIES | INNER : REEL | | | OUTER : CARTON | | |
|---------|--------------|-----------|-------|----------------|-----------|--------------|
| | Q'TY (PCS) | G.W. (gw) | STYLE | Q'TY (PCS) | G.W. (Kg) | SIZE (cm) |
| SSC0503 | 1500 | 1800 | 13-16 | 9000 | 14.3 | 40 x 40 x 24 |



RoHS Compliant

NOTE : Specifications subject to change without notice. Please check our website for latest information.

05.08.2008

9. RELIABILITY AND TEST CONDITION :

| TEST ITEM | SPECIFICATION | TEST CONDITION |
|---|---|---|
| SOLDERABILITY | MORE THAN 90% OF THE TERMINAL ELECTRODE SHALL BE COVERED WITH FRESH SOLDER. | PREHEAT : 125±25°C FOR 60 SECONDS SOLDER : 99%Sn/0.3%Ag/0.7%Cu OR EQUIVALENT SOLDER TEMP. : 245±5°C FLUX : ROSIN DIP TIME : 4±1 SECONDS |
| THERMAL SHOCK TEST (TEMP. CYCLE) | INDUCTANCE SHALL NOT CHANGE MORE THAN ±20% | ROOM TEMP. → -25±2°C 15 MINUTES → 30 MINUTES ROOM TEMP. → 85±2°C 15 MINUTES → 30 MINUTES TOTAL : 50 CYCLES |
| HUMIDITY RESISTANCE TEST | | TEMPERATURE : 40±2°C HUMIDITY : 90 ~ 95% APPLIED CURRENT : PER SPEC. TIME : 500 HOURS |
| HIGH TEMP. RESISTANCE TEST | | TEMPERATURE : 85±2°C APPLIED CURRENT : PER SPEC. TIME : 500 HOURS |

10. UL CARD :

| | | | | |
|--|--------------------------------|--------------------------|-------------|----------------|
| OBMW2 | | November 30, 2000 | | |
| Magnet Wire - Component | | | | |
| PACIFIC ELECTRIC WIRE & CABLE (SHENZHEN) CO LTD | | | | E201757 |
| 607 BAOLONG INDUSTRIAL ESTATE LONGGANG, SHENZHEN GUANGDONG CHINA | | | | |
| | Coating Type | | ANSI | |
| Mtl Dsg | BC | TC | Type | TI |
| UEW/U | Polyurethane | — | — | 130 |
| PEW/U | Polyester | — | MW5-C | 155°C |
| PEWH/U | Modified Polyester | — | MW30-C | 180 |
| PEW-NY/U | Polyester | Polyamide | MW24-C | 155 |
| HAI/U | Polyester(Amide)(Imide) | Polyamideimide | MW35,73 | 200 |
| UEW-NY/U | Polyurethane | Polyamide | MW80-C | 155 |
| | | | MW28-C | 130 |
| Marking: Company name and material designation or marked designation on package or reel, and Recognized Component Mark. | | | | |
| See General Information Preceding These Recognitions | | | | |
| 1/3/2001 | Underwriters Laboratories Inc. | | Card 1 of 2 | |



RoHS Compliant

NOTE : Specifications subject to change without notice. Please check our website for latest information.

05.08.2008



SUPERWORLD ELECTRONICS (S) PTE LTD

PG. 5