

# High-Selectivity Ceramic Filters for TV/VCR Stage

High-Selectivity Ceramic Filter  
for TV/VCR Stage Compatible Murata SFT



## ► Preview

Token high-selectivity Ceramic filters for TV/VCR stage LTT MA series is 4 element devices that offer more selectivity than the conventional LT series (Murata SFE). The improved spurious suppression of these filters eliminates the need for cascading multiple filtering devices; therefore, it is possible to design a more compact circuit board configuration.

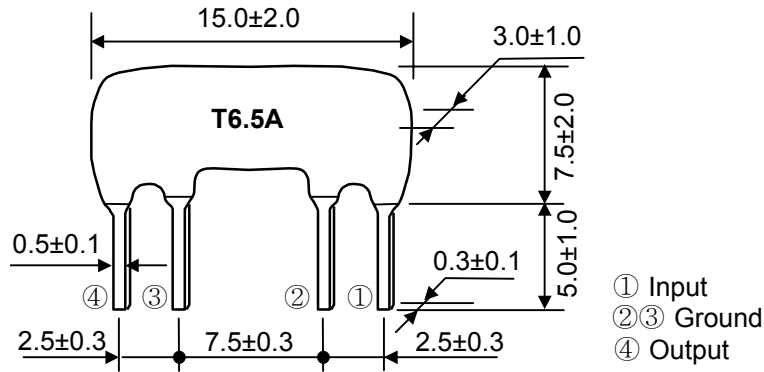
Token High-Selectivity Filter LTT MA series conform to the RoHS directive. This high-selectivity device can be customized designs and tighter tolerances available on request.

Application of ceramic filter specific designs also available including different piezo band-pass devices and Q specifications adjusted to frequency requirements. Token ceramic filters can supply you high performance, high quality and stability.

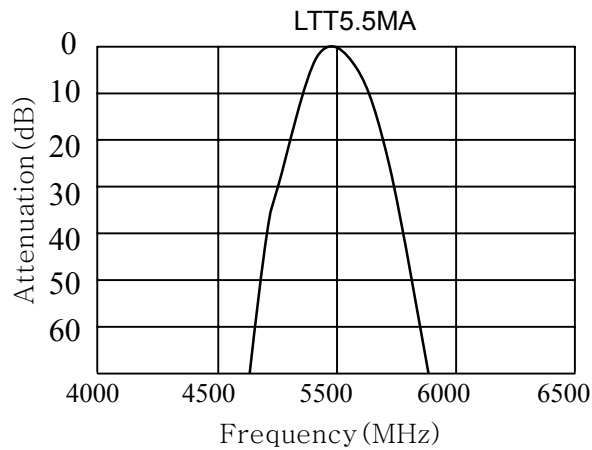
With dimensions ( $15\pm 2.0 \times 7.5\pm 2.0 \times 3.0\pm 1.0$  mm), Insert Loss max 9db and 10dB, Spurious Attenuation min 40dB and 50 db, and Input/Output Impedance 470 $\Omega$ , 600 $\Omega$ , 1000 $\Omega$ , Nominal Center Frequency (fo) (MHz) of LTT MA series is available 4.500MHz, 4.724MHz, 5.500MHz, 5.742MHz, 6.000MHz, 6.250MHz, 6.500MHz, and 6.742MHz.

Custom parts are available on request. Token will also produce devices outside these specifications to meet specific customer requirements, please contact our sales for more information.

## Dimensions



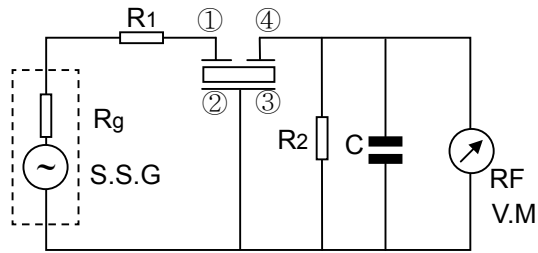
## Technical Characteristics



Part Number	Nominal Center Frequency (fo) (MHz)	3dB Band Width (kHz) min	20dB Band Width (kHz) max	Insert Loss (dB) max	Spurious Attenuation (dB) min	Input/Output Impedance ( $\Omega$ )
LTT4.5MA	4.500	$f_o \pm 40$	370	10.0	40( $4.5^{+0.8}_{-1.0}$ MHz)	1000
LTT4.72MA	4.724	$f_o \pm 40$	370	10.0	40( $4.72^{+0.8}_{-1.0}$ MHz)	1000
LTT5.5MA	5.500	$f_o \pm 50$	350	9.0	40( $5.5 \pm 1$ MHz)	600
LTT5.74MA	5.742	$f_o \pm 50$	350	9.0	50( $5.74 \pm 1$ MHz)	600
LTT6.0MA	6.000	$f_o \pm 50$	400	9.0	50( $6.0 \pm 1$ MHz)	470
LTT6.25MA	6.250	$f_o \pm 50$	400	9.0	50( $6.25 \pm 1$ MHz)	470
LTT6.5MA	6.500	$f_o \pm 50$	400	9.0	50( $6.5 \pm 1$ MHz)	470
LTT6.74MA	6.742	$f_o \pm 50$	400	9.0	50( $6.74 \pm 1$ MHz)	470

# TOKEN LTT MA Ceramic Filters for TV/VCR Stage

## ▶ Test Circuit



$R_g + R_1 = R_2 = \text{Input/Output Impedance}$   $C = 10\text{pF}$   
Including stray capacitance and input capacitance of RF voltmeter

## ▶ How to Order

LTT4.5MA

❶

P

❷

❶ Part Number

❷ Package

*Back to 1st Page - Ceramic Filters High-Selectivity for TV/VCR Stage - LTT MA*