



P/N:EHR004 DATA SILEET

Feature

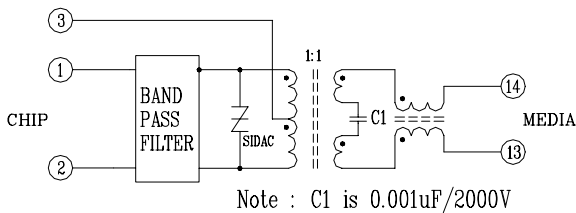


- Optimized for AMD79C978, Conexant CN7221 and National DP83851 Chips .
- Supports TUT System HPN Architecture.
- Robust construction allows for reflow processes .
- Operating temperature range: 0°C to +70°C.
- Storage temperature range: -25°C to +125°C.

Electrical Specifications @ 25°C

Part Number	Turns Ratio	Insertion Loss (dB Max)	Return Loss (dB Min)	Attenuation (dB)				HI-POT (Vrms)
				6-9 MHz	6-9 MHz	1.0MHz	27MHz	
EHR004	1:1	-3	-12	-57(Min)	-60(Normal)	-45(Min)	-48(Normal)	1500

Schematic



Mechanical

