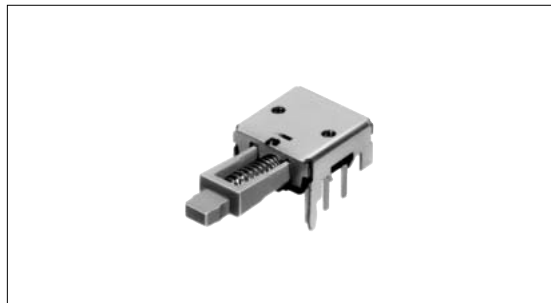


Push Switch 1.5mm-travel Low-profile Horizontal Type

SPPJ6 Series



4.5mm height low-profile switch, ideal for compact devices.



Typical Specifications

Items		Specifications
Rating (max.) (min.) (Resistive load)		0.2A 12V DC/50 μ A 3V DC
Contact resistance (Initial performance./ After lifetime)		20m max./40m max.
Operating force		2 \pm 1N
Operating life	Without load	10,000cycles
	With load	10,000cycles(0.2A 12V DC)

Product Line

Changeover timing	Travel (mm)	Total travel (mm)	Rating	Mounting method	Poles	Operation	Terminal type	Minimum order unit (pcs.)	Product No.
Non shorting	1.5	2.5		PC board	2	Latching	For PC board	5,000	SPPJ620800
						Momentary			SPPJ621100

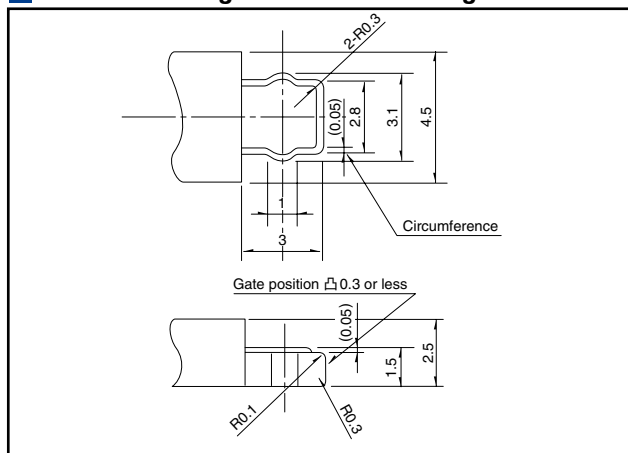
Dimensions

Unit:mm

Style	PC board mounting hole dimensions (Viewed from the direction A)

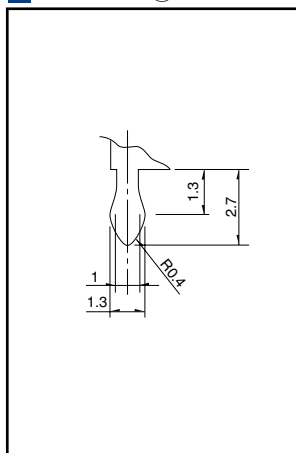
Actuator Configuration at Front Edge

Unit:mm



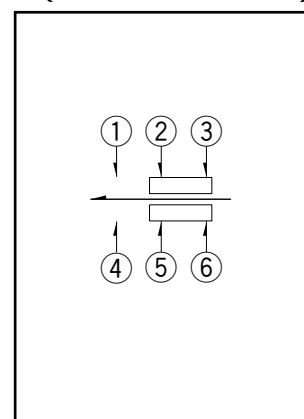
Detail of (a)

Unit:mm



Circuit Diagram

(Viewed from Direction A)



Note

1. Products other than those listed in the above chart are also available. Please contact us for details .
2. Please place purchase orders per minimum order unit (integer).

List of Varieties

Series	SPEE	SPPJ6	SPPJ3	SPPJ2	SPUJ 1	SPUP 1	SPUN	SPUN medium current 1	SPEG	SPPH2	
Photo											
Travel (mm)	0.3 0.71	1.5	2.5		2	1.5 2	2.5			1	
Total travel (mm)	0.9	2.5	3.5		3	2.5 3	3.5		1.2	1.5	
Number of poles	1	2	1 2	2	2 4				1	2	
Dimensions (mm)	W	4	9		6.6 7.2		7.5		10	7.15	6.5
	D	5	12		15.2 22.7		24 36		8.35	6	
	H	1.22	4.5	8.3	9.6	8.8	10.3	13	3.5	6.5	
Operating temperature range	- 10°C to + 60°C		- 40°C to + 85°C		- 10°C to + 60°C						
Rating (max. χ Resistive load)	20mA 5V DC	0.2mA 5V DC	0.2mA 30V DC		0.1mA 30V DC			1A 25V DC	50mA 16V DC	0.1A 12V DC	
Rating (min. χ Resistive load)	100 μ A 3V DC	50 μ A 3V DC						1A 25V DC	50 μ A 3V DC		
Electrical performance	Initial contact resistance	2	20m max.						200m max.	30m max.	
	Insulation resistance	10M min. 100V DC	100M min. 500V DC						3M min. 100V DC	100M min. 500V DC	
	Voltage proof	100V AC for 1minute	500V AC for 1minute						100V AC for 1minute	500V AC for 1minute	
Mechanical performance	Terminal strength	5N for 1minute								0.5N for 1minute	5N for 1minute
	Actuator strength	Operating direction	50N		30N		50N			50N	30N
Pulling direction		—————									
Durability	Operating life without load	100,000 cycles	10,000cycles 40m max.				30,000cycles 40m max.	10,000cycles 40m max.	35,000cycles 500m max.	10,000cycles 50m max.	
	Operating life without load Load:as rating	100,000 cycles	10,000cycles 40m max.				5,000cycles 40m max.				
Environmental performance	Cold	-40 \pm 2 for 96h	-20 \pm 2 for 96h						-20 \pm 2 for 96h		
	Dry heat	85 \pm 2 for 96h								85 \pm 2 for 96h	
	Damp heat	40 \pm 2 , 90 to 95%RH for 96h								40 \pm 2 , 90 to 95%RH for 96h	
Soldering	Manual soldering	350 \pm 10 4 ⁺¹ ₀ s	350 \pm 10 3 ⁺¹ ₀ s		300 \pm 10 3 ⁺¹ ₀ s		350 \pm 10 3 ⁺¹ ₀ s		350 \pm 5 3s max.	350 max. 3s max.	
	Dip soldering		260 \pm 5 5 \pm 1s	260 \pm 5 10 \pm 1s	260 \pm 5 5 \pm 1s		260 \pm 5 10 \pm 1s			260 \pm 5 5 \pm 1s	
	Reflow soldering	Please see P.108	—————						Please see P.108		
Page	84	85	86	88	90	91	92		94	96	

Push Switches Attached Parts	107
Soldering Conditions	108
Push Switches Products Caution	109

Notes

- ※1. The operating temperature range for automotive applications can be raised upon request. Please contact us for requirements of this kind.
- ※2. 1V or less, at the present rating of 1mA, 5V DC for output voltage.