

Specification Status: Released

Maximum Electrical Ratings

Operating Voltage / Interrupt Current

15V / 40A

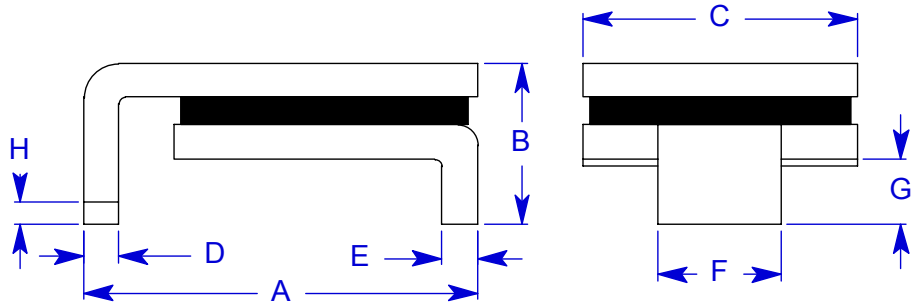
12V / 60A

5V / 125A

Marking:



Manufacturer's Mark
Part Identification



Notes:

1. All metal surfaces are tin plated.
2. Devices cannot be wave soldered.
3. Drawing not to scale.

TABLE I. DIMENSIONS:

| | A | | B | | C | | D | | E | | F | | G | | H |
|------|---------|---------|-----|---------|---------|---------|---------|---------|---------|---------|---------|---------|---------|---------|---------|
| | MIN | MAX | MIN | MAX | MIN | MAX | MIN | MAX | MIN | MAX | MIN | MAX | MIN | MAX | MIN |
| mm: | 8.00 | 9.40 | -- | 3.00 | 6.0 | 6.71 | 0.56 | 0.71 | 0.56 | 0.71 | 3.68 | 3.94 | 0.66 | 1.37 | 0.43 |
| in*: | (0.315) | (0.370) | -- | (0.118) | (0.236) | (0.264) | (0.022) | (0.028) | (0.022) | (0.028) | (0.145) | (0.155) | (0.026) | (0.054) | (0.017) |

*Rounded off approximation

TABLE II. PERFORMANCE RATINGS:

| CURRENT RATINGS** | | | | | | TIME TO TRIP** | RESISTANCE VALUES | TRIPPED-STATE POWER DISSIPATION** | |
|-------------------|------|--------------|------|--------------|------|---------------------------|-------------------|-----------------------------------|-------------------|
| AMPS AT 0°C | | AMPS AT 20°C | | AMPS AT 60°C | | SECONDS AT 20°C, 8.0A MAX | OHMS AT 20°C | | WATTS AT 20°C MAX |
| HOLD | TRIP | HOLD | TRIP | HOLD | TRIP | | MIN | MAX* | |
| 1.80 | 3.60 | 1.50 | 3.00 | 0.99 | 1.98 | 5 | 0.060 | 0.250 | 1.9 |

* Maximum resistance is measured both 1 hour post reflow and 1 hour post trip.
** Values specified were determined using PCB's with 0.070"X1.5 ounce copper traces.

Reference Documents:

PS300, E.N. SMD 1.0x

Precedence:

This specification takes precedence over documents referenced herein.

Effectivity:

Reference documents shall be the issue in effect on the date of invitation for bid.

CAUTION:

Operation beyond the rated voltage or current may result in rupture, electrical arcing or flame.