



Data Sheet



Product Category: RF SAW Filter

Part Number	Package	Application	Last Modified
803-RF868.3M-A	3.8 x 3.8 SMD	Wireless	Jan. 01, 2007

TYPE :

868.3 MHz RF SAW Filter



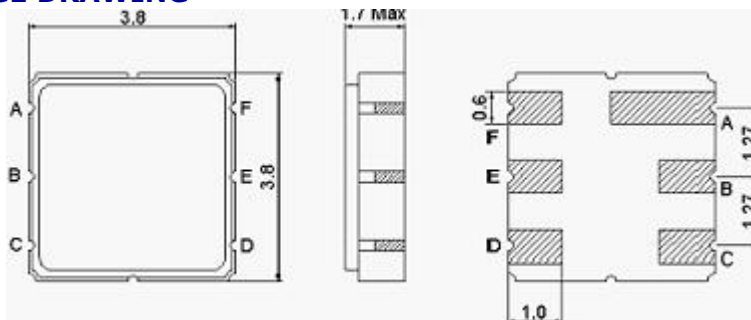
PART NUMBER :

**803-RF868.3M-A****OPERATING CONDITIONS / ELECTRICAL CHARACTERISTICS**

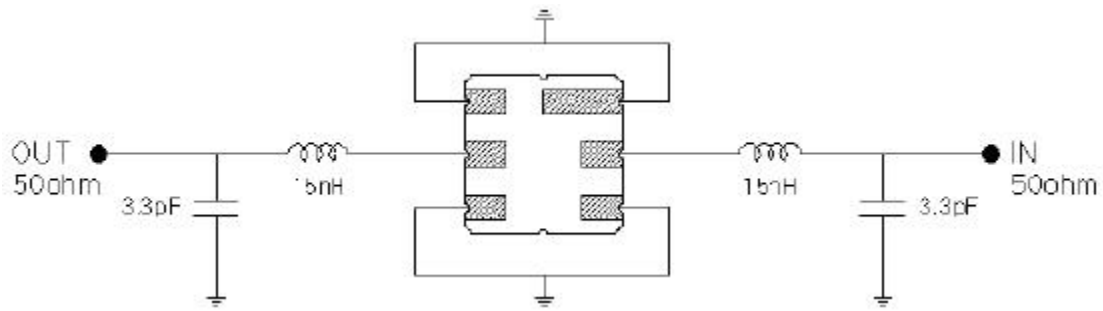
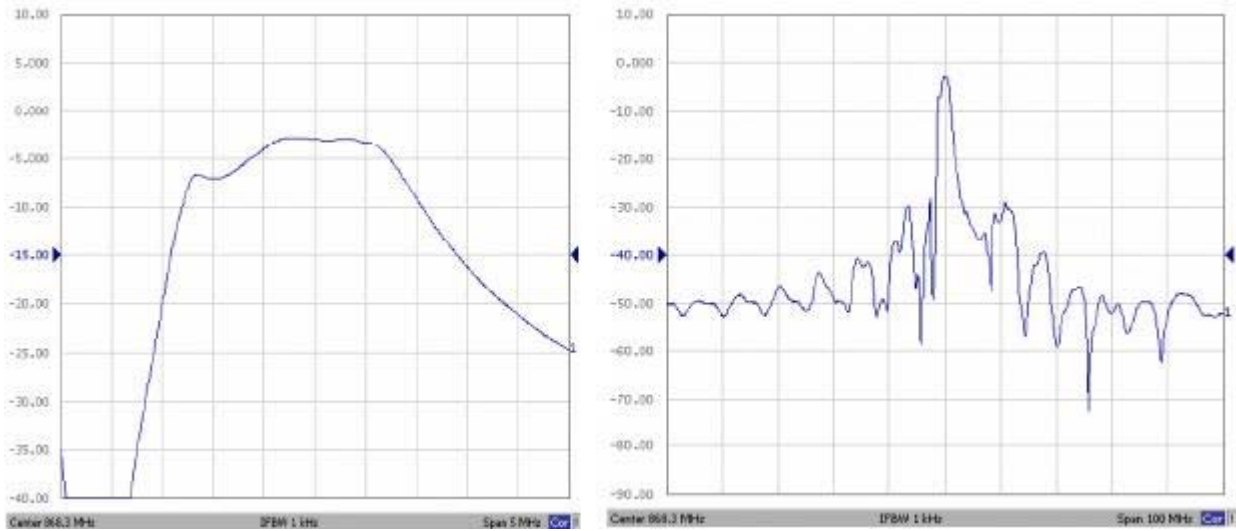
PARAMETERS	Condition	Minimum	Typical	Maximum	Units
Center Frequency	-	-	868.3	-	MHz
Insertion Loss	868 ~ 868.78 MHz	-	2.7	4.2	dB
DC Voltage	-	-	-	0	V
Input Power	-	-	-	0	dBm
Operating Temperature	-	-45	-	+90	°C
Storage Temperature	-	-45	-	+90	°C
Relative Passband	868 ~ 868.78MHz	-	1.0	3.0	dB
	867.9 ~ 868.88 MHz	-	1.5	6.0	
3dB Bandwidth	-	-	1500	-	kHz
Relative Attenuation	10 ~ 700 MHz	50	55	-	dB
	700 ~ 830 MHz	40	45	-	
	830 ~ 850 MHz	35	40	-	
	850 ~ 865.02 MHz	25	28	-	
	871 ~ 874.5 MHz	15	20	-	
	874.5 ~ 883 MHz	22	26	-	
	883 ~ 900 MHz	30	35	-	
900 ~ 1000 MHz	40	45	-		
Source Impedance	single ended*	-	117//3.7	-	ohm//Pf
Load Impedance	single ended*	-	117//3.7	-	ohm//pF

\* With Matching Network ((Ref. Testing Environment Circuit as shown)

\*\* Custom SAW RF Filters available. Contact Oscilent for assistance.

**PACKAGE DRAWING**

Pin Layout	
A	Ground
B	Input
C	Ground
D	Ground
E	Output
F	Ground

**TEST FIXTURE****FREQUENCY RESPONSE**

**Oscilent Corporation** - CALL **949.252.0522**  
 18195 East McDermott Street . Building D . Irvine . CA 92614 . USA  
 Fax: 949.252.0599 . E-Mail: [Sales@Oscilent.com](mailto:Sales@Oscilent.com)

**Part No.:** 803-RF868.3M-A