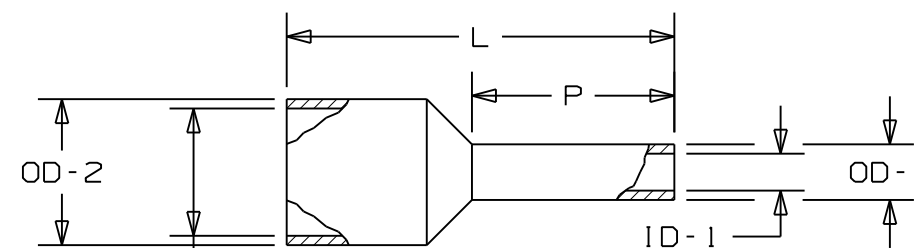


PART NO	WIRE RANGE AWG (mm ²)	COLOR	STRIP LENGTH : 1/32" : 0,791	L	P	ID-1	OD-1	MAX WIRE INSUL DIA	OD-2	INSTALLATION TOOLS
FSF72-6-D	26 (0,14)	BROWN	3/8 (9,5)	0.41 (10,5)	0.24 (6,0)	0.03 (0,8)	0.04 (1,1)	0.07 (1,7)	0.10 (2,5)	CT-1002 CT-1123
FSF72-8-D			15/32 (11,9)	0.49 (12,5)	0.31 (8,0)	0.03 (0,8)	0.04 (1,1)	0.07 (1,7)	0.10 (2,5)	
FSF73-6-D	24 (0,25)	VIOLET	3/8 (9,5)	0.41 (10,5)	0.24 (6,0)	0.03 (0,8)	0.04 (1,1)	0.07 (1,7)	0.10 (2,5)	CT-1002 CT-1123
FSF73-8-D			15/32 (11,9)	0.49 (12,5)	0.31 (8,0)	0.03 (0,8)	0.04 (1,1)	0.07 (1,7)	0.10 (2,5)	
FSF74-6-D	24 (0,34)	PINK	3/8 (9,5)	0.41 (10,5)	0.24 (6,0)	0.03 (0,8)	0.04 (1,1)	0.07 (1,7)	0.10 (2,5)	CT-1002 CT-1123
FSF74-8-D			15/32 (11,9)	0.49 (12,5)	0.31 (8,0)	0.03 (0,8)	0.04 (1,1)	0.07 (1,7)	0.10 (2,5)	
FSF75-6-D	22 (0,50)	WHITE	3/8 (9,5)	0.45 (11,5)	0.24 (6,0)	0.04 (1,1)	0.06 (1,4)	0.09 (2,2)	0.12 (3,0)	CT-1002 CT-1003 CT-1123
FSF75-8-D			15/32 (11,9)	0.53 (13,5)	0.31 (8,0)	0.04 (1,1)	0.06 (1,4)	0.09 (2,2)	0.12 (3,0)	
FSF75-10-D			17/32 (13,5)	0.61 (15,5)	0.39 (10,0)	0.04 (1,1)	0.06 (1,4)	0.09 (2,2)	0.12 (3,0)	
FSF76-6-D	20 (0,75)	BLUE	3/8 (9,5)	0.47 (12,0)	0.24 (6,0)	0.05 (1,3)	0.06 (1,6)	0.09 (2,4)	0.13 (3,2)	CT-1002 CT-1003 CT-1123
FSF76-8-D			15/32 (11,9)	0.55 (14,0)	0.31 (8,0)	0.05 (1,3)	0.06 (1,6)	0.09 (2,4)	0.13 (3,2)	
FSF76-10-D			17/32 (13,5)	0.63 (16,0)	0.39 (10,0)	0.05 (1,3)	0.06 (1,6)	0.09 (2,4)	0.13 (3,2)	
FSF76-12-D			5/8 (15,9)	0.71 (18,0)	0.47 (12,0)	0.05 (1,3)	0.06 (1,6)	0.09 (2,4)	0.13 (3,2)	
FSF77-6-D	18 (1)	RED	3/8 (9,5)	0.49 (12,5)	0.24 (6,0)	0.06 (1,5)	0.07 (1,8)	0.11 (2,7)	0.14 (3,6)	CT-1002 CT-1003 CT-1123
FSF77-8-D			15/32 (11,9)	0.57 (14,5)	0.31 (8,0)	0.06 (1,5)	0.07 (1,8)	0.11 (2,7)	0.14 (3,6)	
FSF77-10-D			17/32 (13,5)	0.65 (16,5)	0.39 (10,0)	0.06 (1,5)	0.07 (1,8)	0.11 (2,7)	0.14 (3,6)	
FSF77-12-D			5/8 (15,9)	0.73 (18,5)	0.47 (12,0)	0.06 (1,5)	0.07 (1,8)	0.11 (2,7)	0.14 (3,6)	
FSF78-6-D	16 (1,50)	BLACK	3/8 (9,5)	0.49 (12,5)	0.24 (6,0)	0.07 (1,8)	0.08 (2,1)	0.12 (3,0)	0.16 (4,0)	CT-1002 CT-1003 CT-1123
FSF78-8-D			15/32 (11,9)	0.57 (14,5)	0.31 (8,0)	0.07 (1,8)	0.08 (2,1)	0.12 (3,0)	0.16 (4,0)	
FSF78-10-D			17/32 (13,5)	0.65 (16,5)	0.39 (10,0)	0.07 (1,8)	0.08 (2,1)	0.12 (3,0)	0.16 (4,0)	
FSF78-12-D			5/8 (15,9)	0.73 (18,5)	0.47 (12,0)	0.07 (1,8)	0.08 (2,1)	0.12 (3,0)	0.16 (4,0)	
FSF78-18-D			7/8 (22,2)	0.96 (24,5)	0.71 (18,0)	0.07 (1,8)	0.08 (2,1)	0.12 (3,0)	0.16 (4,0)	

PART NO	WIRE RANGE AWG (mm ²)	COLOR	STRIP LENGTH : 1/32" : 0,791	L	P	ID-1	OD-1	MAX WIRE INSUL DIA	OD-2	INSTALLATION TOOLS
FSF79-8-D	14 (2,08)	YELLOW	15/32 (11,9)	0.57 (14,5)	0.31 (8,0)	0.08 (2,1)	0.09 (2,4)	0.13 (3,2)	0.17 (4,2)	CT-1002 CT-1003 CT-1123
FSF80-8-D	14 (2,50)	GREY	15/32 (11,9)	0.59 (15,0)	0.31 (8,0)	0.09 (2,3)	0.10 (2,6)	0.15 (3,7)	0.19 (4,8)	
FSF80-12-D			5/8 (15,9)	0.75 (19,0)	0.47 (12,0)	0.09 (2,3)	0.10 (2,6)	0.15 (3,7)	0.19 (4,8)	
FSF80-18-D			7/8 (22,2)	0.98 (25,0)	0.71 (18,0)	0.09 (2,3)	0.10 (2,6)	0.15 (3,7)	0.19 (4,8)	
FSF81-10-D	12 (4)	ORANGE	17/32 (13,5)	0.69 (17,5)	0.39 (10,0)	0.11 (2,9)	0.13 (3,3)	0.17 (4,3)	0.21 (5,4)	CT-1002 CT-1003 CT-1123
FSF81-12-C			5/8 (15,9)	0.79 (20,0)	0.47 (12,0)	0.11 (2,9)	0.13 (3,3)	0.17 (4,3)	0.21 (5,4)	
FSF81-18-C			7/8 (22,2)	1.02 (26,0)	0.71 (18,0)	0.11 (2,9)	0.13 (3,3)	0.17 (4,3)	0.21 (5,4)	
FSF82-12-C	10 (6)	GREEN	5/8 (15,9)	0.79 (20,0)	0.47 (12,0)	0.14 (3,6)	0.16 (4,0)	0.22 (5,5)	0.27 (6,8)	CT-1003 CT-1004 CT-1123 CT-1104
FSF82-18-C			7/8 (22,2)	1.02 (26,0)	0.71 (18,0)	0.14 (3,6)	0.16 (4,0)	0.22 (5,5)	0.27 (6,8)	
FSF83-12-C	8 (10)	BROWN	5/8 (15,9)	0.83 (21,0)	0.47 (12,0)	0.18 (4,6)	0.20 (5,0)	0.27 (6,8)	0.32 (8,1)	CT-1003 CT-1004 CT-1123 CT-1104
FSF83-18-C			7/8 (22,2)	1.06 (27,0)	0.71 (18,0)	0.18 (4,6)	0.20 (5,0)	0.27 (6,8)	0.32 (8,1)	
FSF84-12-C	6 (16)	WHITE	5/8 (15,9)	0.91 (23,0)	0.47 (12,0)	0.24 (6,0)	0.25 (6,4)	0.32 (8,2)	0.38 (9,6)	CT-1004 CT-1104
FSF84-18-C			7/8 (22,2)	1.14 (29,0)	0.71 (18,0)	0.24 (6,0)	0.25 (6,4)	0.32 (8,2)	0.38 (9,6)	
FSF85-16-L	4 (25)	BLACK	3/4 (19,1)	1.14 (29,0)	0.63 (16,0)	0.30 (7,5)	0.31 (7,9)	0.41 (10,3)	0.47 (12,0)	CT-1005
FSF85-18-L			7/8 (22,2)	1.22 (31,0)	0.71 (18,0)	0.30 (7,5)	0.31 (7,9)	0.41 (10,3)	0.47 (12,0)	
FSF85-22-L			1 (25,4)	1.38 (35,0)	0.87 (22,0)	0.30 (7,5)	0.31 (7,9)	0.41 (10,3)	0.47 (12,0)	
FSF86-16-L	2 (35)	RED	3/4 (19,1)	1.18 (30,0)	0.63 (16,0)	0.33 (8,5)	0.35 (8,9)	0.45 (11,5)	0.53 (13,5)	CT-1006
FSF86-18-L			7/8 (22,2)	1.26 (32,0)	0.71 (18,0)	0.33 (8,5)	0.35 (8,9)	0.45 (11,5)	0.53 (13,5)	
FSF86-25-L			1 1/8 (28,6)	1.54 (39,0)	0.98 (25,0)	0.33 (8,5)	0.35 (8,9)	0.45 (11,5)	0.53 (13,5)	
FSF87-20-L	1 (50)	BLUE	15/16 (23,8)	1.42 (36,0)	0.79 (20,0)	0.41 (10,5)	0.44 (11,1)	0.54 (13,7)	0.64 (16,2)	CT-1006
FSF87-25-0			1 1/8 (28,6)	1.61 (41,0)	0.98 (25,0)	0.41 (10,5)	0.44 (11,1)	0.54 (13,7)	0.64 (16,2)	

NOTES:

- MATERIAL:
 - A. STAMPING - COPPER, TIN PLATED
 - B. HOUSING - POLYPROPYLENE, COLOR CODED
- DIMENSIONS IN BRACKETS ARE IN mm OR mm²
- FOR TOLERANCING REFER TO DIN 46228 PART 4
- PACKAGE QTY.:
 - Q=25
 - L=50
 - C=100
 - D=500



MAX WIRE INSUL DIA

CAD FILENAME/LAYERS

07	05/09	SRB	LCA	OD-1 was 0.05(1,3)for FSF72, FSF73, FSF74				
06	03/08	BCT	LCA	ADDED SQUARE CRIMP TOOLS CT-1123 & CT-1104 TO THE INSTALLATION TOOLS	NLECN00429	RRE		
05	4/07	BCT	BCT	MODIFIED PART LENGTH TO 'L'; MODIFIED MAX. WIRE INSUL. DIA. TO 2 DECIMAL PLACES	TRO0252	TRO	LCA	
04	10/05	DAW	DAW	MAX INSUL DIA COLUMN WAS ID-2. UPDATED ALL MAX INSULATION DIAMETERS.	TRO0027			
03	1/01	EJS	SKB	ADDED PACKAGE CODE TO PART NUMBER, ADDED NOTE 4	08912	CCH	JAC	
02	3/99	JKD	SKB	WIRE RANGE FOR CT-1003 TOOL WAS 14-8 AWG	07519	TRO	JCJ	
01	3/99	JKD	SKB	WIRE RANGE WAS 22 FOR FSF74-6 & -8, 20 FOR FSF75-6, -8 & -10	07488	TRO	JCJ	
00	2/99	JKD	SKB	RELEASED	07459	TRO	JCJ	
REV	DATE	BY	CHK	DESCRIPTION	ECN #	PM	CUST	

PANDUIT CORP TINLEY PARK, ILLINOIS

FERRULE - SINGLE WIRE (FRENCH)

UNLESS OTHERWISE SPECIFIED, DIMENSIONAL TOLERANCES ARE:
 (.X) ± (.XXX) ±
 (.XX) ± ANGLES ±

UNLESS OTHERWISE SPECIFIED, ALL DIMENSIONS ARE GIVEN IN INCHES, THIRD ANGLE PROJECTION

SCALE: NONE

DRAWN BY: JKD
 DATE: 2/9/99
 CHK'D: SKB

DWG NO: A41668
 DWG SIZE: B