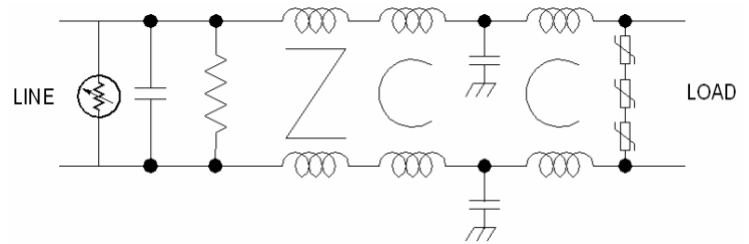


JMK Inc.

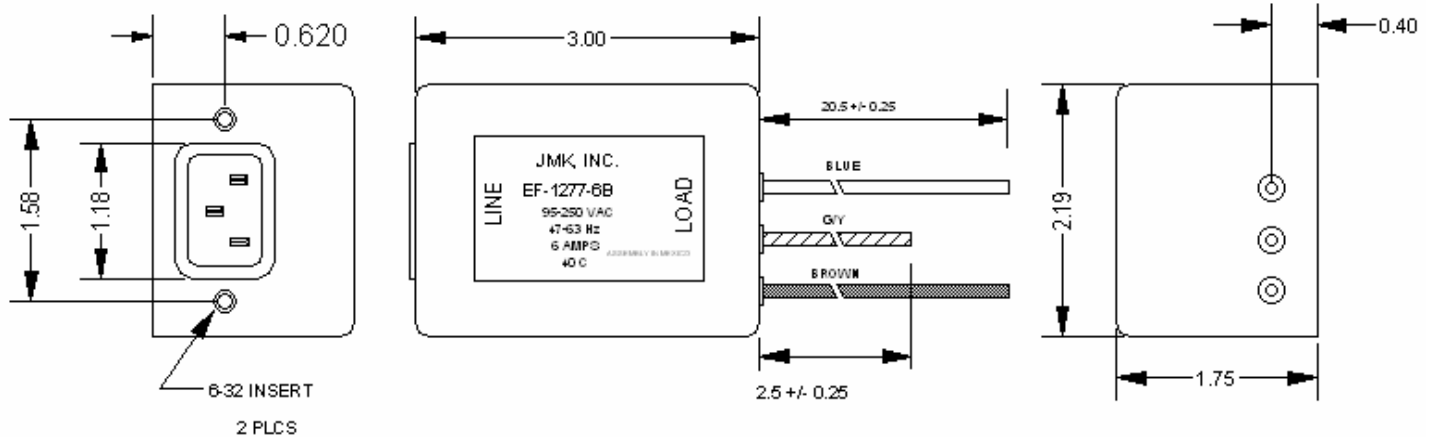
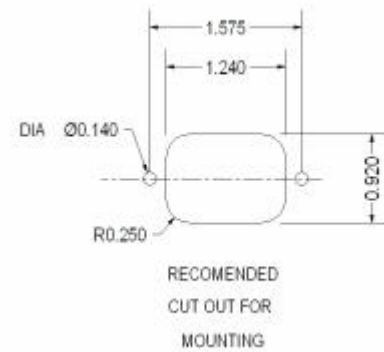
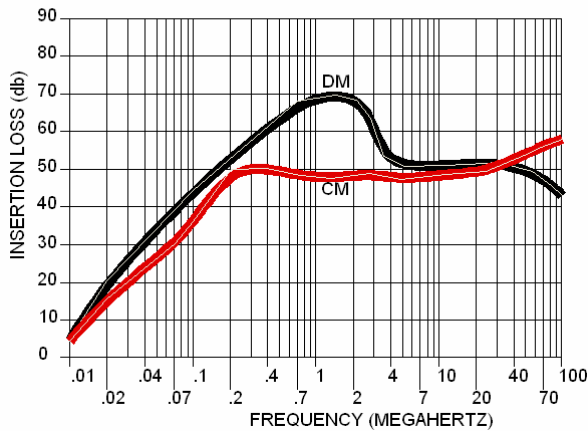
EF-1277-6B

This filter is very similar to our HH-1055-6.3 filter. The only difference is that the filter has been housed in an enclosure with an IEC inlet connector. Some minor modifications have been made to eliminate internal coupling. This is an excellent filter for use with Harmonic attenu-

Operating Voltage= 95/250 Vac
Operating Current Max.= 6 amp
Operating Frequency = 50/60 Hz @ 95 / 250 V~
= 50 / 400 Hz @ 95—140 V~
Temperature Range= -40 to 50 deg. C
Dielectric Withstand (Line to Case)= 1500Vdc for 1 Min
Dielectric Withstand (Line to Line)= 1500Vdc for 1 min
Leakage Current = 1.2 ma max. @250 V~ / 60 Hz
4.0 ma max. @ 125 V~ / 400Hz
Discharge Volt after 1.0 second = 34 V Max.



INSERTION LOSS VS. FREQUENCY
EF-1277-6B



USA JMK Inc 15 Caldwell Dr. Amherst, NH 03031 PH: 603 886-4100 FX: 603 886-4115
 email: info@jmkfilters.com
 EUR JMK Inc Glasgow G13 1DN Scotland UK PH: 44-(0) 7785310729 FX: 44-(0) 141 589 1884