



## Features

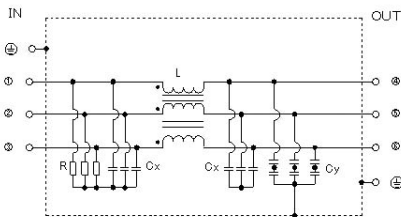
- Three phase filter delta (500VAC).
- 30% smaller size of former model.
- The capacitance of X and Y capacitor is selectable.

## Applications

- Inverter power supplies, UPS, NC controlled machineries.

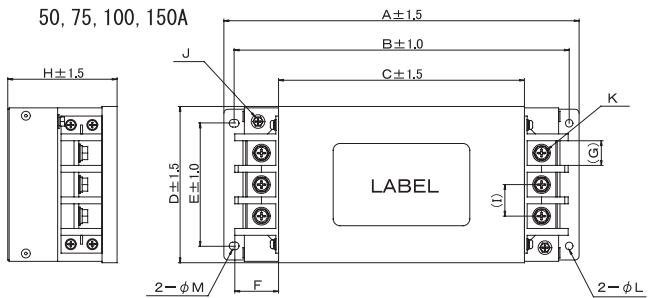


Circuit



## Dimensions

50, 75, 100, 150A



Unit: mm

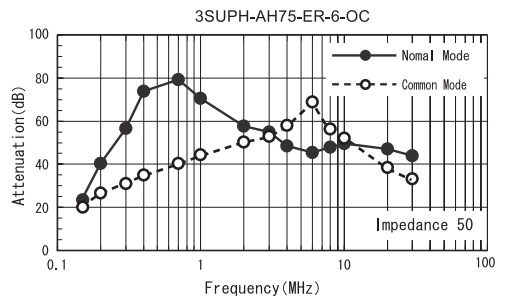
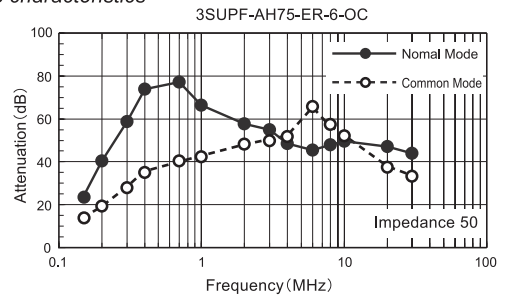
	A	B	C	D	E	F	G	H	I	J	K	L	M
AE50	185	170	120	110	85	23	13	80	18	M4	M6	5.5	5.5x7
AE75	260	245	182	116	90	33	18	80	23	M4	M6	5.5	5.5x7
AE100	260	245	182	116	90	33	18	80	23	M4	M6	5.5	5.5x7
AE150	310	290	220	163	133	42	25	100	30	M6	M8	6.5	6.5x8



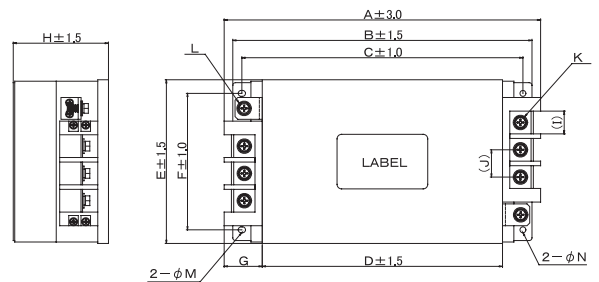
Safety Agency	Standard	File No.
UL	: UL-1283	E78644
C-UL	: C22.2, NO.8-M1986	E78644
SEMKO	: EN133200	SE/0142-7

The "ENCE" mark is a common European product certification mark based on testing to harmonised European safety standard.

## Static characteristics



200, 250A



Unit: mm

	A	B	C	D	E	F	G	H	I	J	K	L	M	N
AE200	349	330	310	265	180	150	42	105	25	30	M8	M8	6.5x8	6.5
AE250	364	345	325	280	180	150	42	120	25	30	M8	M8	6.5x8	6.5

## Electrical Specifications

Rated Voltage **500VAC**

Model Number ※1	Rated Current (A)	Test Voltage	Insulation Resistance	Leakage Current (max)※2	Voltage Drop (max)	Temperature Rise (max)	Operating Temperature (°C)
3SUPF(H)-AH50-ER-6-OC	50	(Line-Ground) 2000Vrms 50/60Hz 60sec	(Line-Ground) 6000MΩmin (at 500Vdc)	4.7mA (at 500Vrms 60Hz)	1.0Vrms	50K	-25 ~ +50 (100°C with Temp. rise)
3SUPF(H)-AH75-ER-6-OC	75						
3SUPF(H)-AH100-ER-6-OC	100						
3SUPF(H)-AH150-ER-6-OC	150						
3SUPF(H)-AH200-ER-6-OC	200						
3SUPF(H)-AH250-ER-6-OC	250						

※1 Standard type

※2 Standard type leakage current

## Model Numbering System

3SUP□-AH□□□-ER-6-□□  
A B C D

- A: Core material
- B: Rated current
- C: X cap capacitance
- D: Y cap capacitance