



TAI-SAW TECHNOLOGY CO., LTD.

No. 3, Industrial 2nd Rd., Ping-Chen Industrial District,
Tao-Yuan, 324, Taiwan, R.O.C.

TEL: 886-3-4690038 FAX: 886-3-4697532

E-mail: tstsales@mail.taisaw.com Web: www.taisaw.com

Approval Sheet for Product Specification

Issued Date:

Product Name: RF SAW Filter 836.5 MHz

TST Parts No.: TA836GG

Customer Parts No.: _____

Company: _____
Division: _____
Approved by : _____
Date: _____

Checked by: _____ Elvis Chiu

Approval by: _____ Francis Chen

Date: _____ 2004/03/22



TAI-SAW TECHNOLOGY CO., LTD.

No. 3, Industrial 2nd Rd., Ping-Chen Industrial District,
Taoyuan, 324, Taiwan, R.O.C.

TEL: 886-3-4690038 FAX: 886-3-4697532

E-mail: tstsales@mail.taisaw.com Web: www.taisaw.com

RF SAW Filter 836.5 MHz for CDMA

Model No.: TA836GG

Rev. No.:2

A. MAXIMUM RATING:

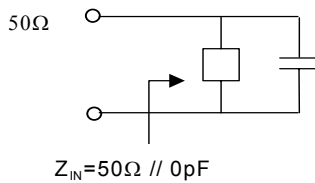
1. Input Power Level: +15 dB_m
2. DC voltage: -5~+5 V
3. Operating Temperature: -30°C ~ +85°C
4. Storage Temperature: -40°C ~ +100°C

RoHS Compliant
Lead free
Lead-free soldering

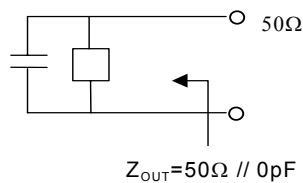
B. ELECTRICAL CHARACTERISTICS:

Characteristics	Value			Note
	Min.	Typ.	Max.	
Center frequency F_c MHz	-	836.5	-	-
Insertion loss (824 ~ 849 MHz) I.L. dB	-	2.8	3.5	-
V.S.W.R (824 ~ 849 MHz) dB	-	1.6	2.0	-
Ripple (824 ~ 849 MHz) dB	-	0.7	1.6	-
Attenuation: (Reference level from 0 dB)				
1) D.C. ~ 800 MHz dB	50	55.8	-	-
2) 869 ~ 1049 MHz dB	28	31.2	-	-
3) 1049 ~ 1200 MHz dB	50	57.1	-	-
4) 1200 ~ 2000 MHz dB	45	48.6	-	-
Impedance at F_c ; Input $Z_{IN}=R_{IN} // C_{IN}$	50Ω // 0 PF			-
Output $Z_{OUT}=R_{OUT} // C_{OUT}$	50Ω // 0 PF			-

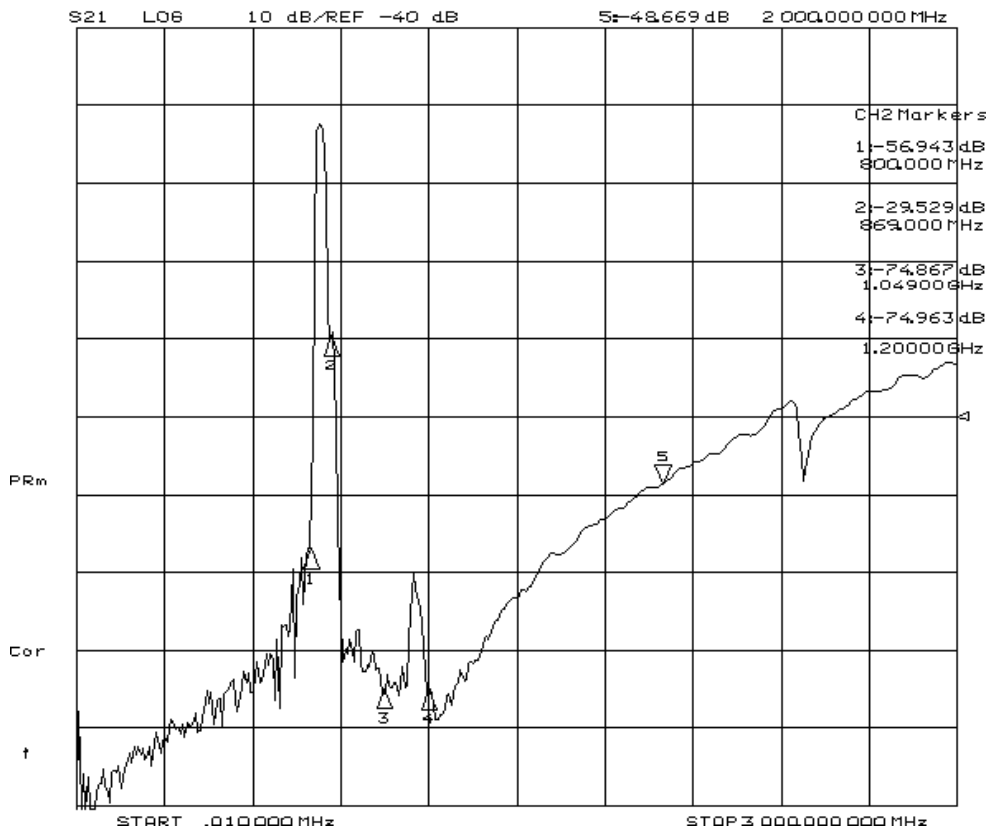
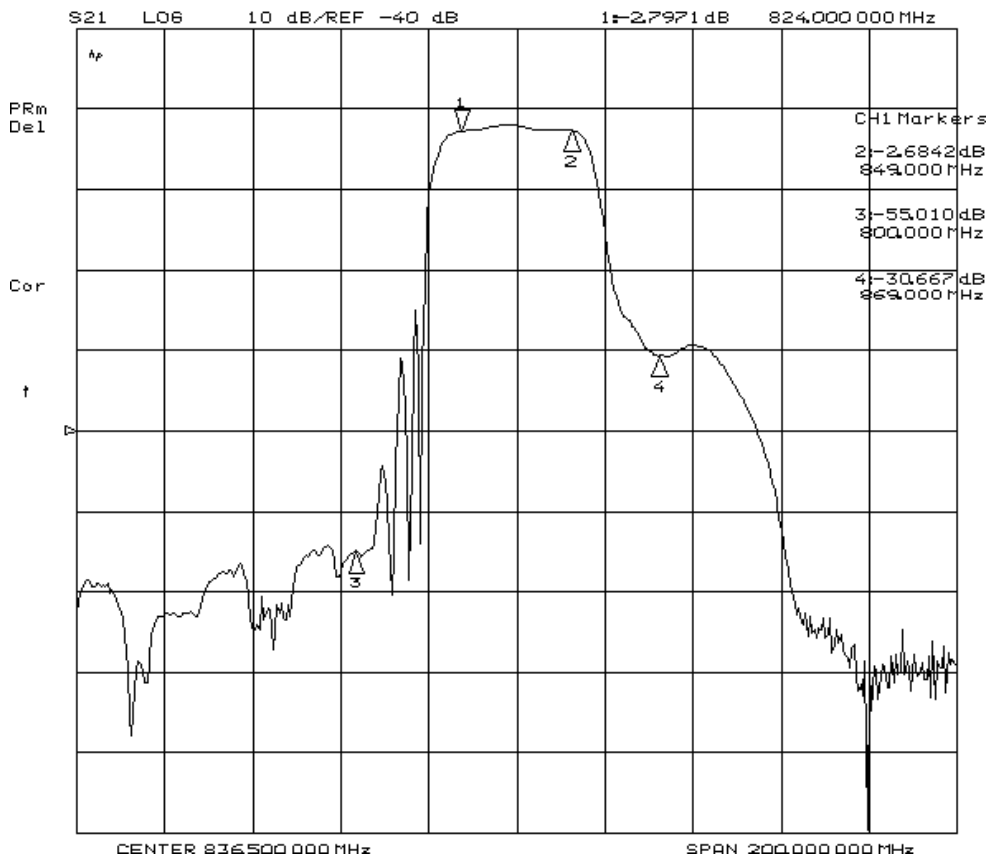
Source impedance



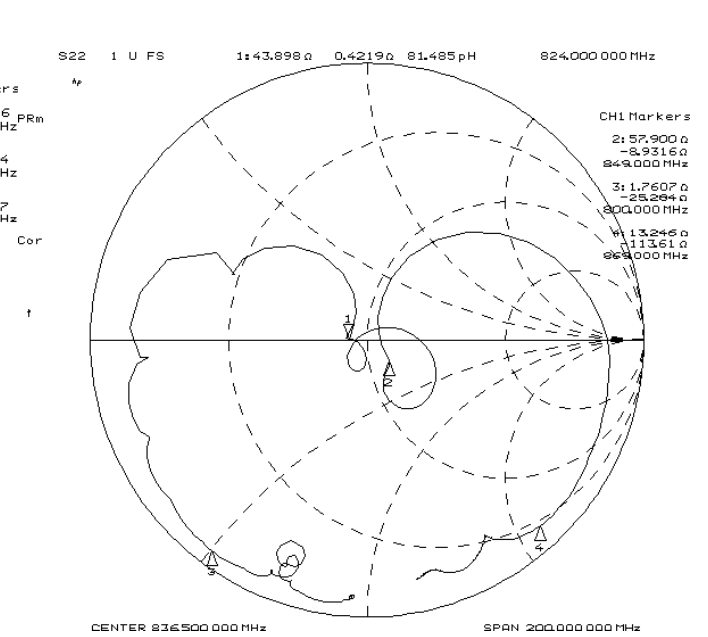
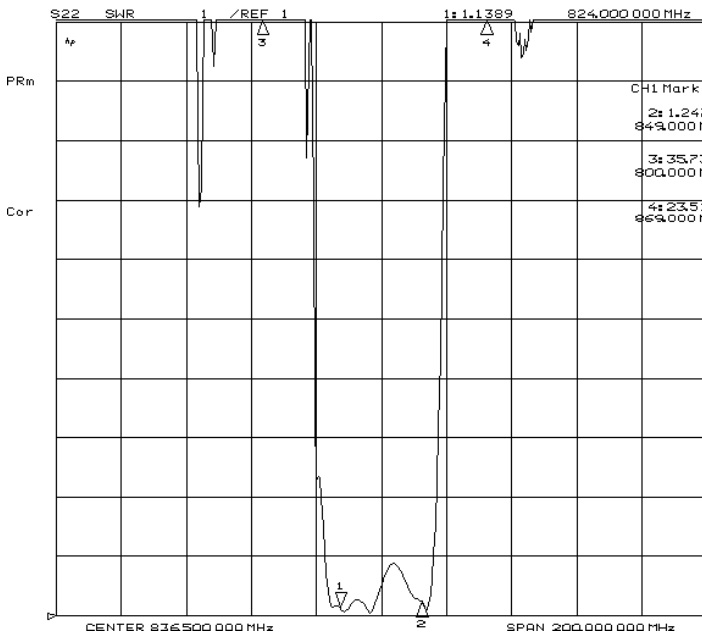
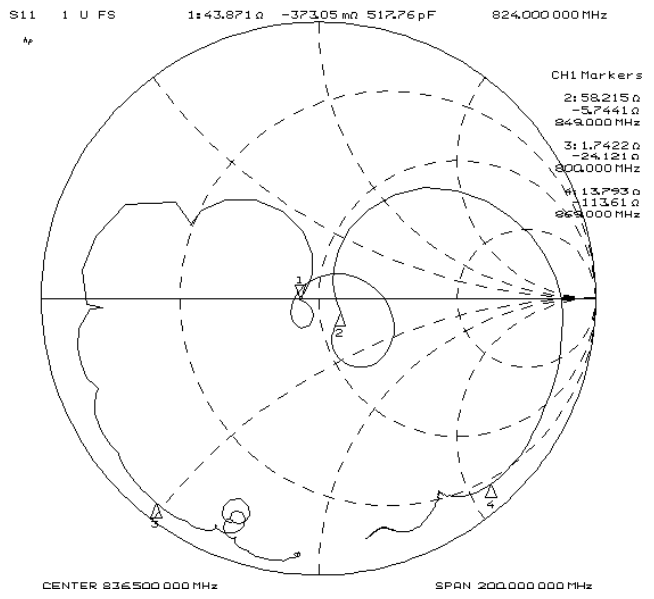
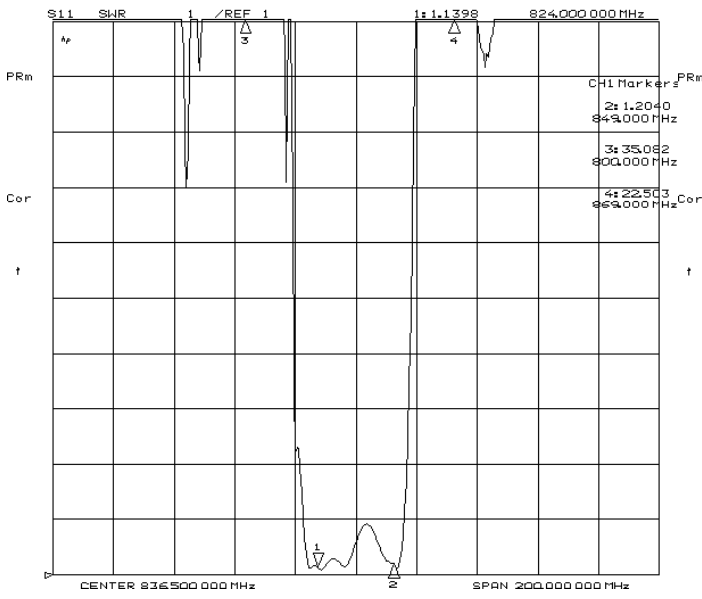
Load impedance



C. FREQUENCY RESPONSE:

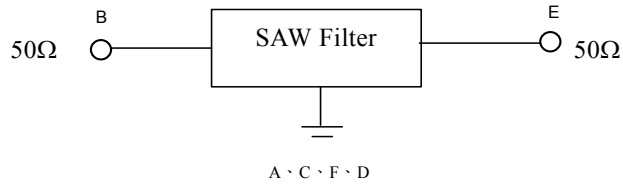


D. VSWR AND SMITH CHART:

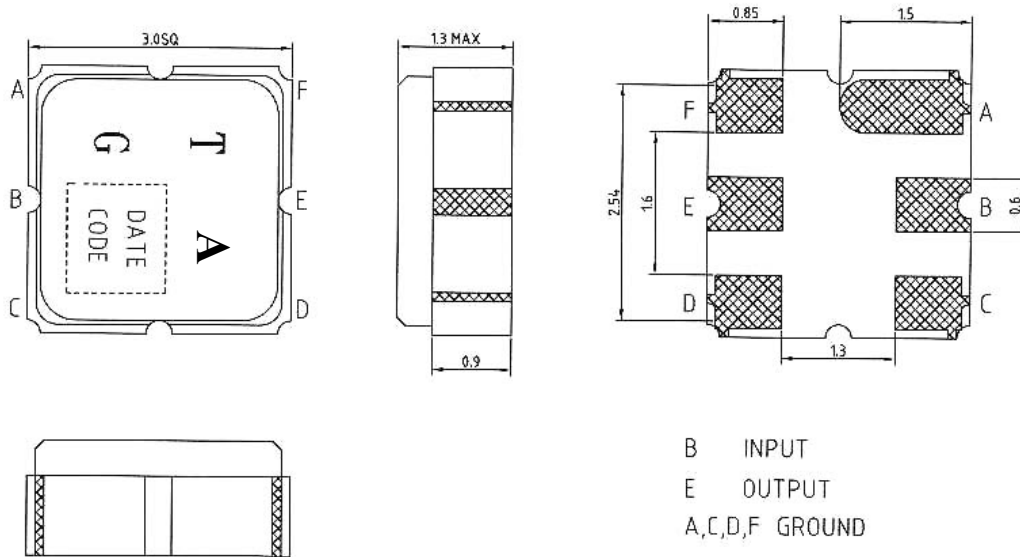


E. MEASUREMENT CIRCUIT:

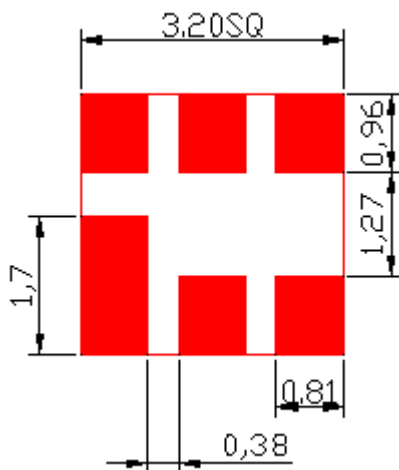
Network analyzer



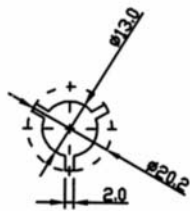
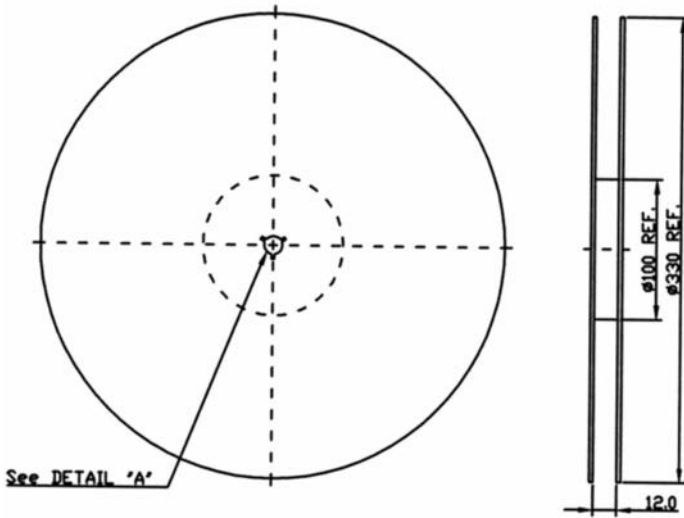
F. OUTLINE DRAWING:



G. LAND PATTERN:



H. PACKING:
REEL DIMENSION



TAPE DIMENSION

