

Specifications

Insulation Resistance:	500MΩ min. at 500 V DC
Withstanding Voltage:	500 V ACrms for 1 minute
Contact Resistance:	35mΩ max. at 10mA
Current Rating:	0.5A
Operating Temp. Range:	-55°C to +85°C
Mating Cycles:	500 insertions
Soldering Temp.:	220°C min. / 60 sec., 250°C peak

Materials and Finish

Housing:	PPS (glass filled), UL 94V-0 rated
Contacts:	Copper Alloy
Plating:	Mating Face Contacts - Gold over Nickel Solder Terminals - Au over Nickel

Features

- Low insertion and extraction forces due to bellows type contacts

Part Number (Details)

NDS 050 - 005 - BF 1

Series (socket)

No. of Leads

Terminal Type: 5 = Straight SMT

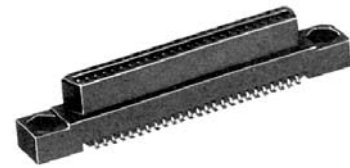
Contact Plating:

Mating Face - Au (0.3μm min.) over Ni (2.5~4.5μm)

Solder Terminals - Au (0.05μm) over Ni (2.5~4.5μm)

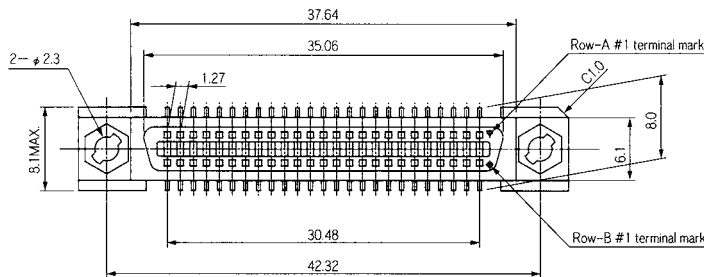
Press-fit Nut Option:

Unmarked = Without Nut 1 = With Nut

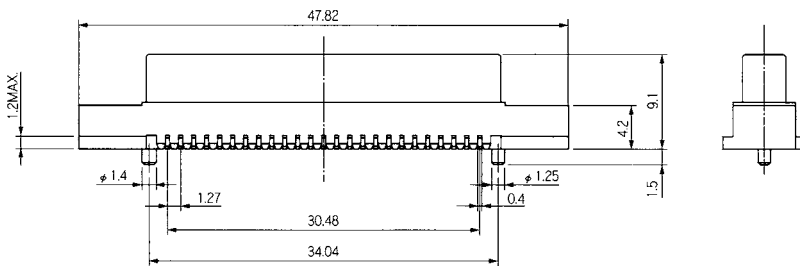
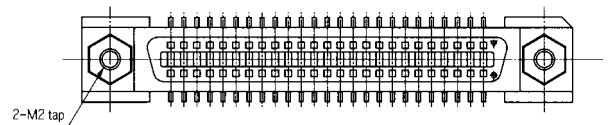


Outline Dimensions

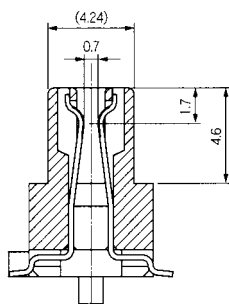
Without press-fit nut



With press-fit nut



Contact Details



Recommended PCB Layout

