

Features

- Frequency Range: 10~200MHz
- Low Noise :1.4dB(Typical)
- 21dBm Typical 1dB Compression
- Standard Hermetic Package
- Operating Temperature Range:-55°C~+85°C

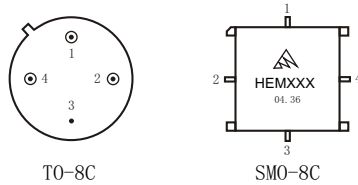
Specifications (50 Ω, V_{CC} = +15V, T_A = -55°C ~ +85°C)

| Parameter | Symbol | Unit | Guaranteed | Typical |
|--------------------------------|--------------------------------|------|------------|---------|
| Frequency Range | f _L ~f _H | MHz | 20~200 | 10~200 |
| Gain | G _p | dB | ≥10.0 | 10.5 |
| Gain Flatness | ΔG _p | dB | ≤±0.5Δ | ±0.3 |
| Noise Figure | F _n | dB | ≤1.6Δ | 1.5 |
| Input VSWR | VSWR _i | --- | ≤2.0:1 Δ | 1.8:1 |
| Output VSWR | VSWR _o | --- | ≤2.0:1 Δ | 1.8:1 |
| Output Power @ 1dB Compression | P ₋₁ | dBm | ≥19.0 * Δ | --- |
| DC Current | I _{cc} | mA | --- | 30 |

- 1) "Δ" * f = 60MHz; "Δ" T_A = 24 ± 1°C;
- 2) The G_p and P₋₁ will be reduced 0.1dB and 2.0dB respectively under operating at 12VDC (I_{cc} = 25mA Typ)

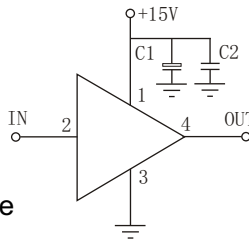
Maximum Rating

- DC Voltage : +18VDC
- RF Input: +13dBm
- Storage Temp: +125°C



Application Notes

1. Typical application shown as right, C₁ = 3.3~22 μF ; C₂ = 3300~6800pF;
2. See assembly section for mounting information
3. Connectorized package(SMA-1) available



Typical Curves

