

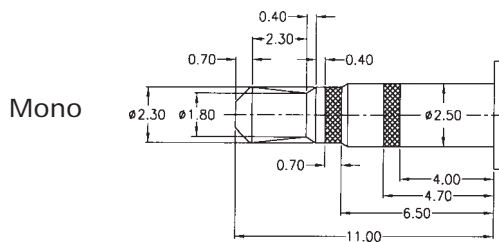


General Specifications for AJ Series

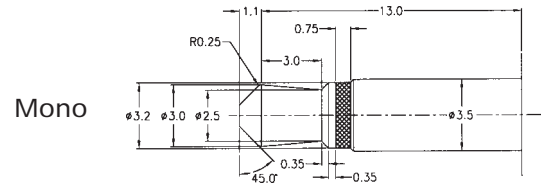
Insulation Resistance: 100MΩ min. at 500 V DC
 Withstanding Voltage: 500 V AC for 1 minute
 Contact Resistance: 50mΩ max. (initial)
 Soldering Heat Test: 260 ±5°C for 5±1 seconds
 Insertion Force: 0.3 to 2.0 Kg
 Extraction Force: 0.3 to 2.0 Kg
 Mating Cycles: 5,000 times
 Soldering Temp.: 220°C / 60 sec., 250°C peak

Mating Plugs for AJ Series (SMT Earphone Jacks)

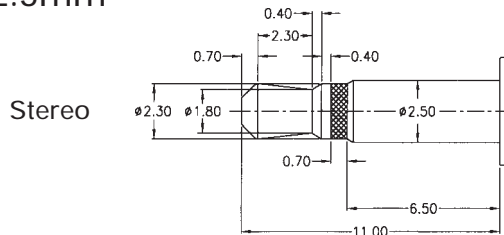
Ø 2.5mm



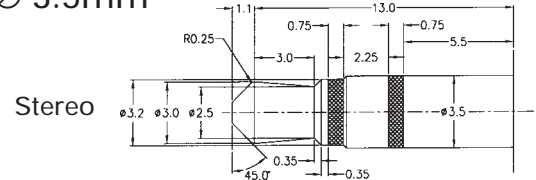
Ø 3.5mm



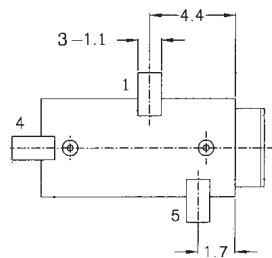
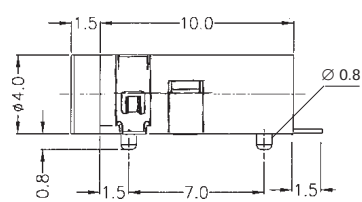
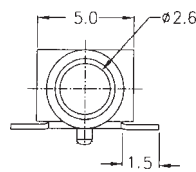
Ø 2.5mm



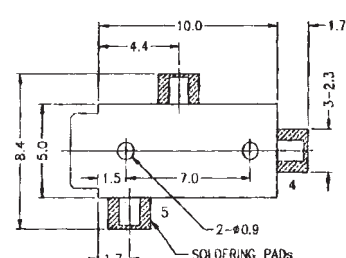
Ø 3.5mm



AJ406-3-SMT

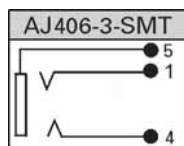


PCB-LAYOUT (Bottom View)

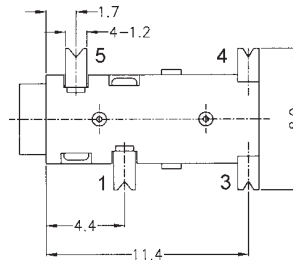
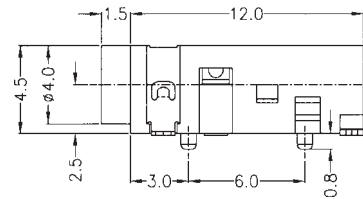
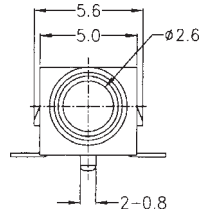


Pad Layout (mounting side)

Part No. (Details)



AJ403-*-SMT

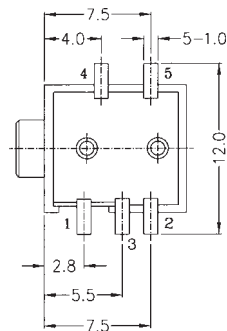
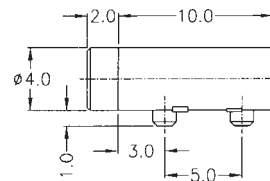
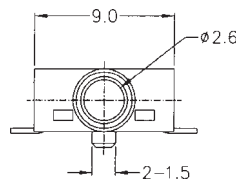


PCB-LAYOUT (Bottom View)

Part No. (Details)

AJ403-4T-SMT	AJ403-3-SMT

AJ404-*-SMT

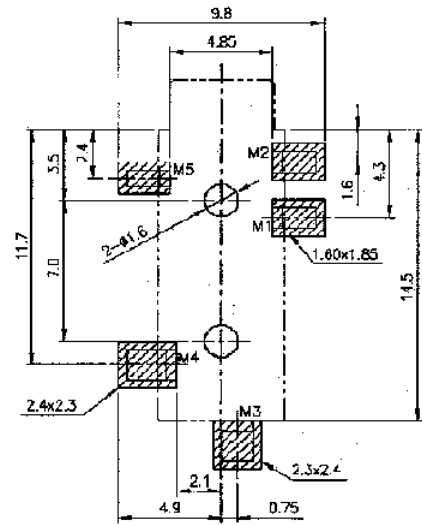
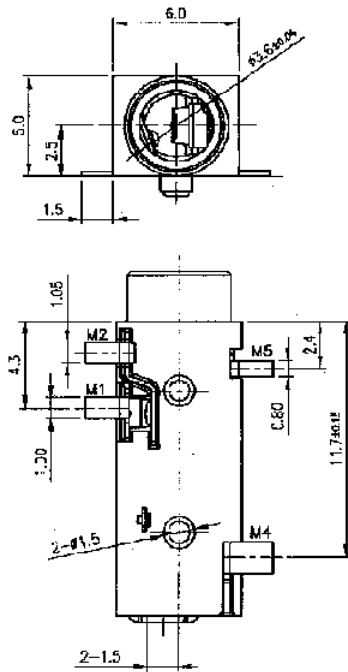
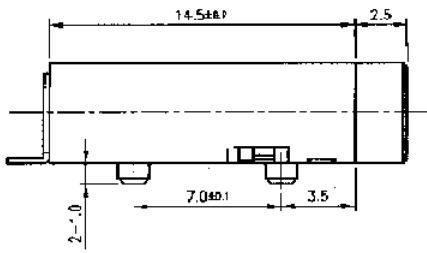


PCB-LAYOUT (Bottom View)

Part No. (Details)

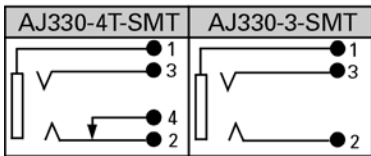
AJ404-5-SMT	AJ404-3M-SMT

AJ330-*-SMT

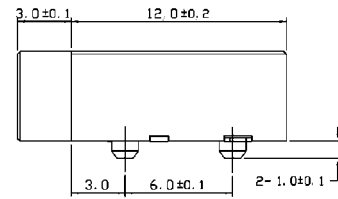
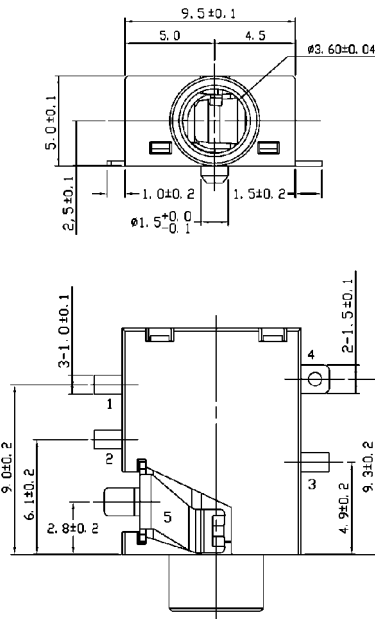
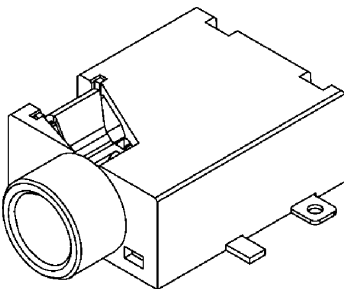


PCB-Layout (Top View)

Part No. (Details)



AJ332-*-SMT



PCB-Layout (Mounting Side)

Part No. (Details)

