



TAI-SAW TECHNOLOGY CO., LTD.

No. 3, Industrial 2nd Rd., Ping-Chen Industrial District,
Taoyuan, 324, Taiwan, R.O.C.
TEL: 886-3-4690038 FAX: 886-3-4697532
E-mail: tstsales@mail.taisaw.com Web: www.taisaw.com


Product Specifications Approval Sheet

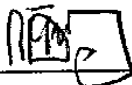
Product Description: SAW Filter 1420 MHz SMD 3.0X3.0 mm

TST Part No.: TA1077A

Customer Part No.: _____

Customer signature required
Company: _____
Division: _____
Approved by : _____
Date: _____

Checked by: _____ Bob Chau 

Approved by: _____ Francis Chen 

Date: _____ 8, 25, 2009

1. Customer signed back is required before TST can proceed with sample build and receive orders.
2. Orders received without customer signed back will be regarded as agreement on the specifications.
3. Any specifications changes must be approved upon by both parties and a new revision of specifications shall be released to reflect the changes.



TAI-SAW TECHNOLOGY CO., LTD.

No. 3, Industrial 2nd Rd., Ping-Chen Industrial District,
Taoyuan, 324, Taiwan, R.O.C.

TEL: 886-3-4690038 FAX: 886-3-4697532

E-mail: tstsales@mail.taisaw.com Web: www.taisaw.com

SAW Filter 1420 MHz

MODEL NO.:TA1077A

REV. NO.:1

A. MAXIMUM RATING:

1. Input Power Level: 10 dBm
2. DC Voltage : 3V
3. Operating Temperature: -40°C to +85°C
4. Storage Temperature: -50°C to +95°C

RoHS Compliant
Lead free
Lead-free soldering

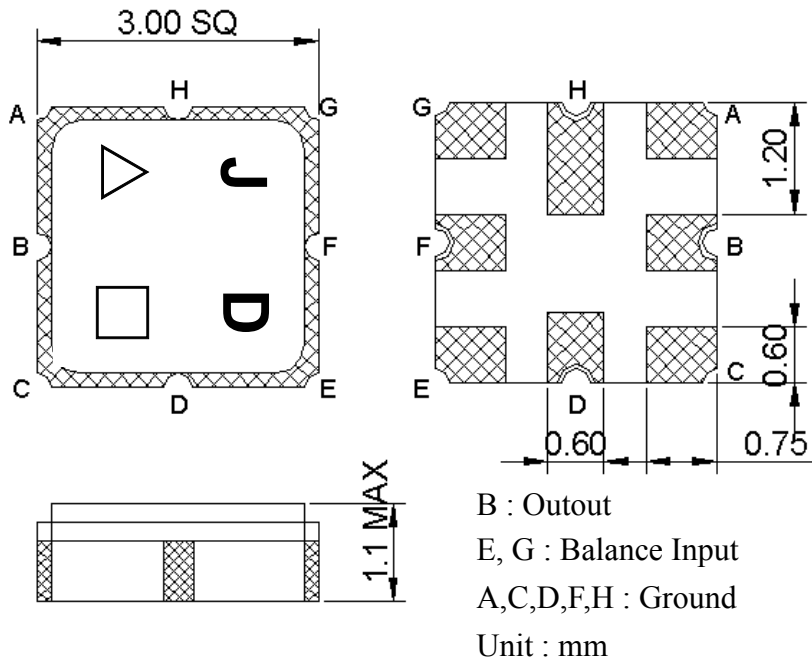
B. ELECTRICAL CHARACTERISTICS:

Terminating source impedance (balanced) : $Z_s = 200 \Omega // 22nH$

Terminating load impedance (single ended) : $Z_L = 50 \Omega$

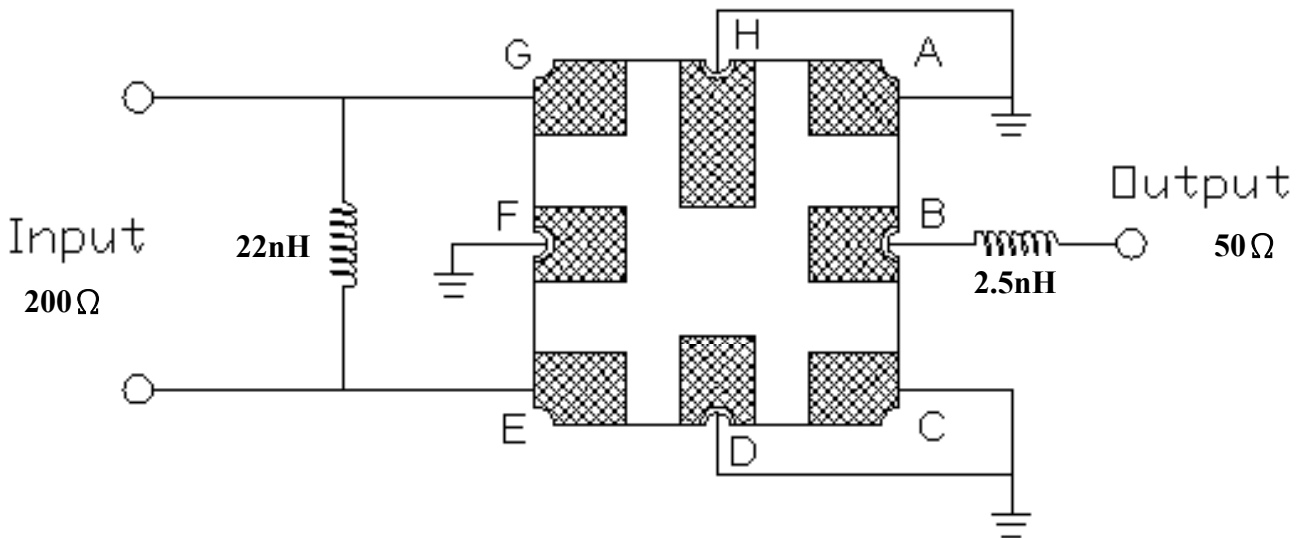
Item	Unit	Min.	Typ.	Max.	Note
Center Frequency Fc	MHz	-	1420	-	-
Bandwidth at -2 dB	MHz	60	72	-	-
Insertion Loss in 1390~1450 MHz	dB	-	3.5	5	-
Amplitude ripple (1390 MHz ~ 1450 MHz)	dB	-	1.5	2	-
I/O VSWR (1390 MHz ~ 1450 MHz)		-	2	2.5	-
Attenuation (reference level from 0 dB)					
50 ~ 1320 MHz	dB	42	62	-	-
1530 ~ 3000 MHz	dB	42	52	-	-
3000 ~ 4000 MHz	dB	30	38	-	-
4000 ~ 6000 MHz	dB	15	27	-	-

C.OUTLINE DRAWING:

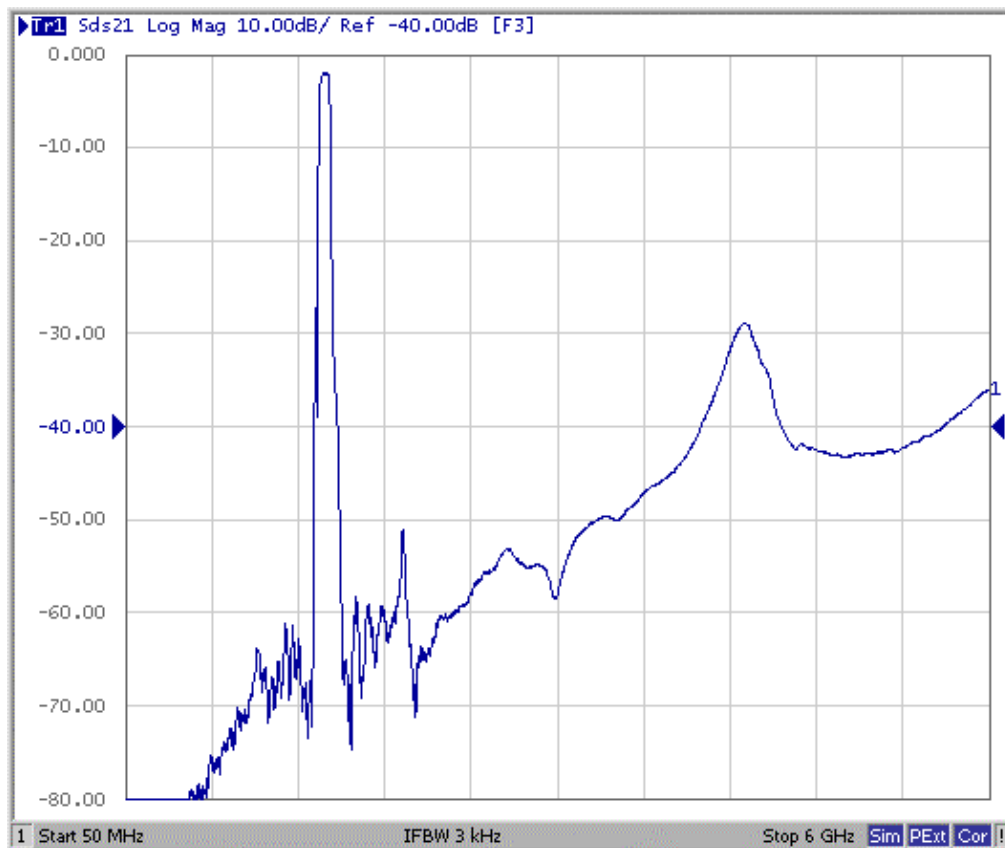
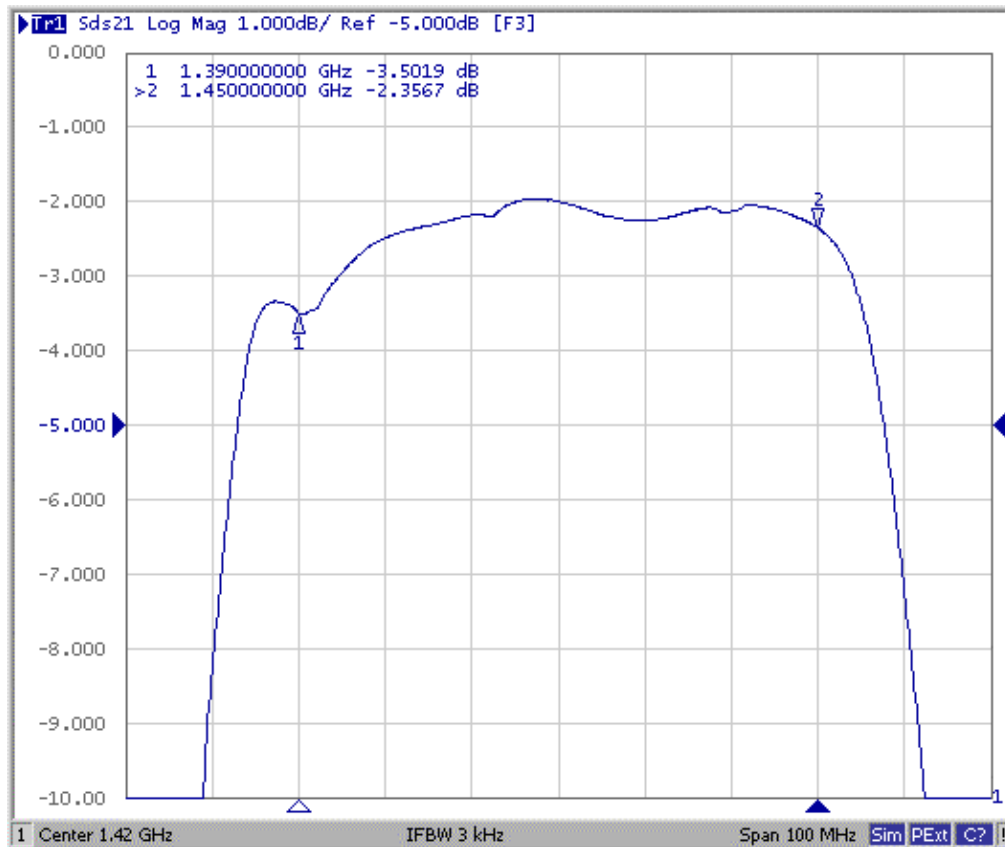


- △ : Year Code (2006->6, ..., 2009->9)
- : Date Code (W01->A,...W26->Z,...W52->z)

D. MEASUREMENT CIRCUIT:

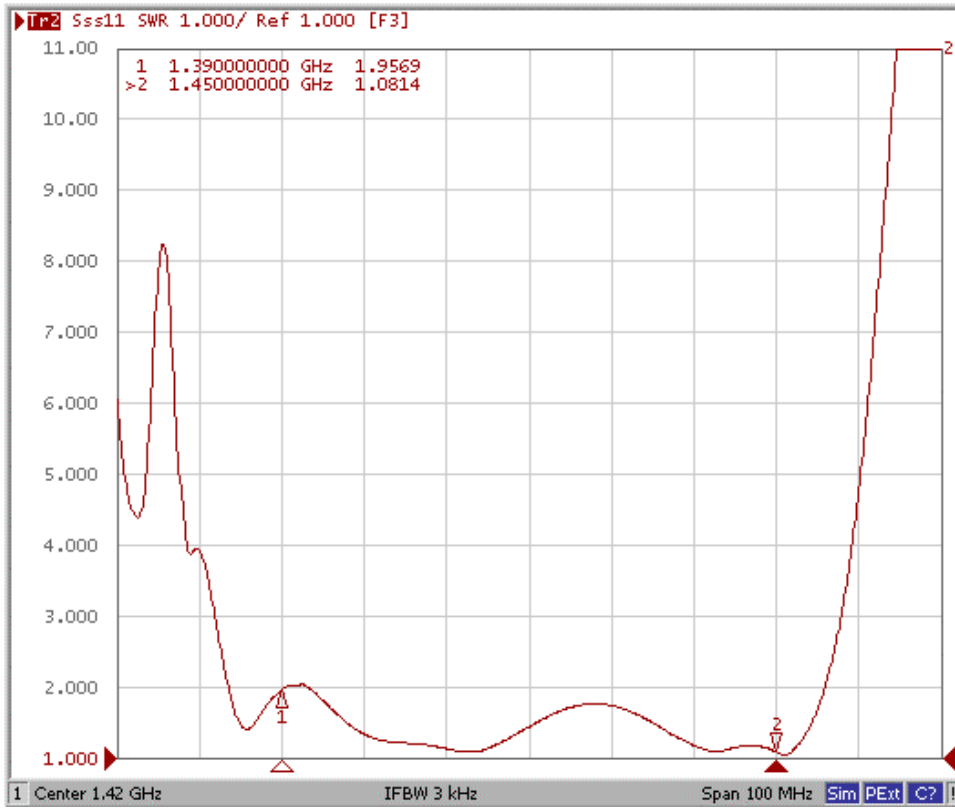


F. Frequency Characteristics :

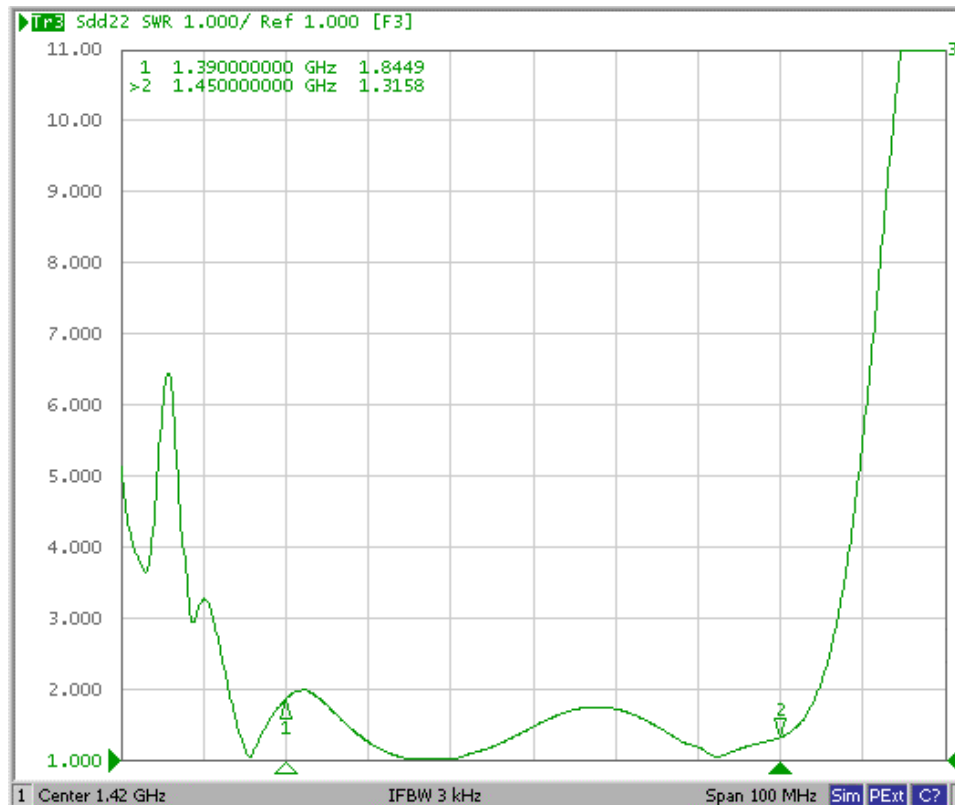


Reflection Functions :

S11



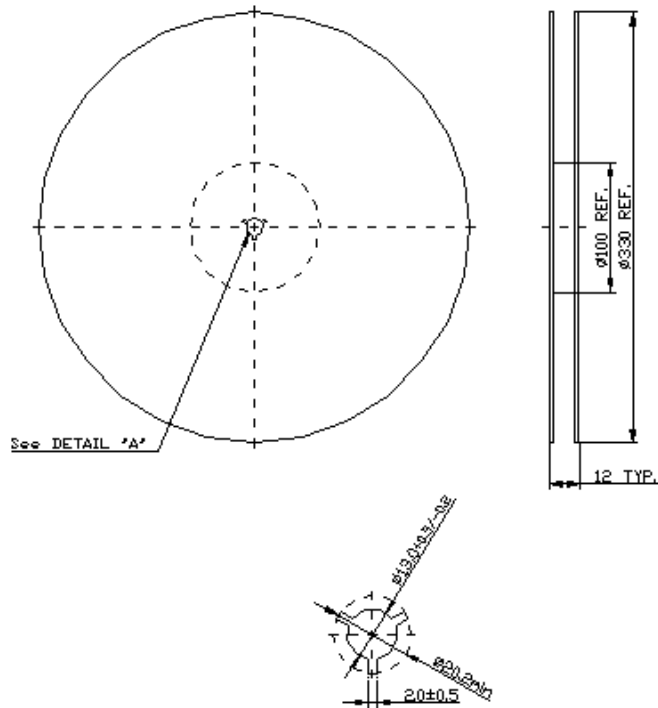
S22



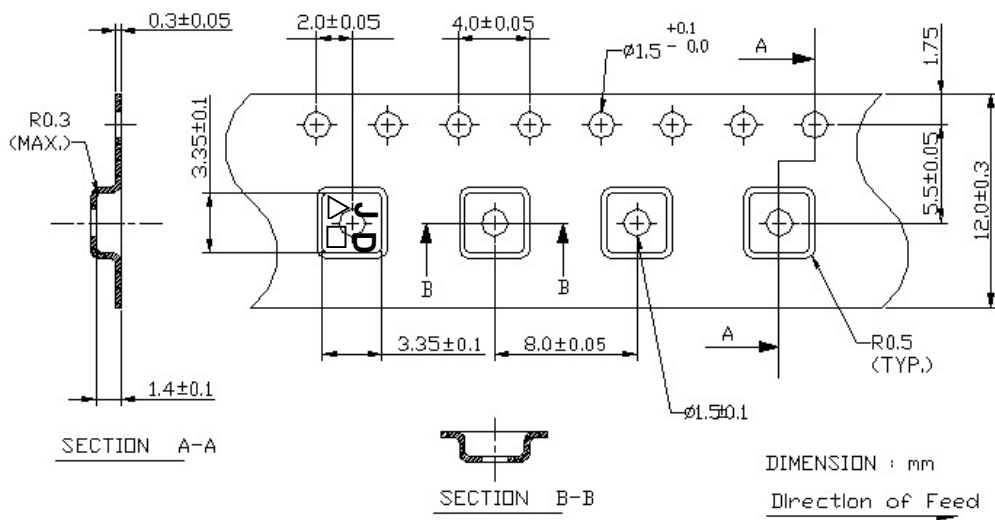
G. PACKING:

1. REEL DIMENSION

(Reel Count : 7''=1000 ; 13''=3000)



2.TAPE DIMENSION



H. RECOMMENDED REFLOW PROFILE :

