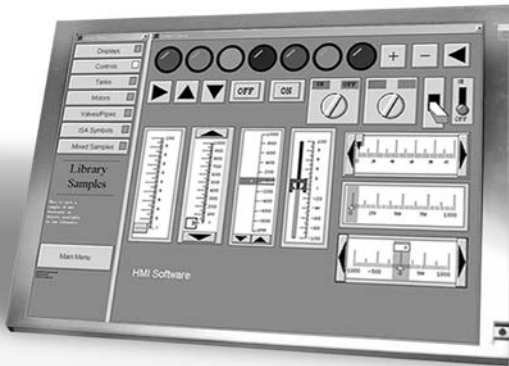


AP-LKLH1745-01

Industrial Monitor Kit 17" 1000 nits, TFT, DC, VGA, AV



Specifications

System	
Form Factor	Industrial Monitor
OS Support	MS DOS, Windows® 2000, Windows® XP
Display	
Size	17"
Resolutions	1280 x 1024
Type	TFT
Max. Colors	262K
Dot Size	0.264 x 0.264
Luminance	1000 nit
Contrast Ratio	500:1
Viewing Angle	160°/150°(Typ.)
Back Light MTBF	40000
Brightness Control	Yes
LCD Interface	LVDS
VGA input	Yes
Video input	Yes
S-video input	Yes
I/O	
Video	1 x S-video in/ 1 x Video-in (option)
Mechanical and Environmental	
Power Requirement	12V DC
Operating Temperature	0°C~50°C
Operating Humidity	95%
Storage Humidity	95%
Dimension	358.5(w) x 296.5(H) x 29(D)
Net Weight	1.93kg

Features

- Wide Viewing Angle
- Fast Response Time
- High Contrast Ratio
- Very High Brightness
- Sunlight Readable

Ordering Information

● AP-LKLH1745-01

Industrial Monitor Kit 17" 1000 nits, TFT, DC, VGA, AV

1

Medical Station Solutions - ONYX Series

2

Fanless Operator Panel Solutions - OMNI Series

3

Robust Panel PC Solutions

4

Industrial Workstation Solutions

5

Industrial Monitor Solutions

6

Embedded Control PC-BOXER Series

7

Accessory Sunreadable LCD Monitors

8

Common Accessories