

Coaxial High Pass Filter

SHP-700+

50Ω 700 to 3000 MHz

Maximum Ratings

| | |
|-----------------------|----------------|
| Operating Temperature | -55°C to 100°C |
| Storage Temperature | -55°C to 100°C |
| RF Power Input | 0.5W max. |

Features

- rugged shielded case
- other standard and custom SHP models available with wide selection of fco

Applications

- lab use
- transmitters/receivers
- radio communications



CASE STYLE: FF99

| Connectors | Model | Price | Qty. |
|------------|----------|-------------|-------|
| SMA | SHP-700+ | \$38.95 ea. | (1-9) |

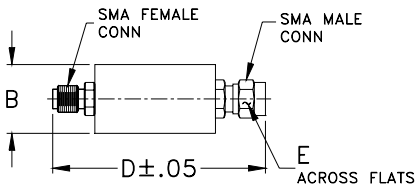
+ RoHS compliant in accordance with EU Directive (2002/95/EC)

The +Suffix has been added in order to identify RoHS Compliance. See our web site for RoHS Compliance methodologies and qualifications.

High Pass Filter Electrical Specifications

| STOPBAND (MHz) | | fco (MHz) Nom. | PASSBAND (MHz) | VSWR (:1) | |
|----------------|----------------|----------------|----------------|---------------|---------------|
| (loss > 40 dB) | (loss > 20 dB) | (loss 3 dB) | (loss < 1 dB) | Stopband Typ. | Passband Typ. |
| DC-400 | 400-520 | 640 | 700-3000 | 17 | 1.6 |

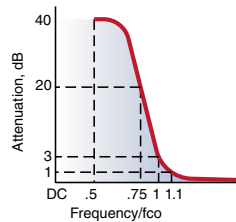
Outline Drawing



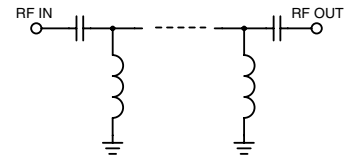
Outline Dimensions (inch/mm)

| B | D | E | wt |
|-------|-------|------|-------|
| .67 | 1.98 | .312 | grams |
| 17.02 | 50.29 | 7.92 | 42.0 |

typical frequency response

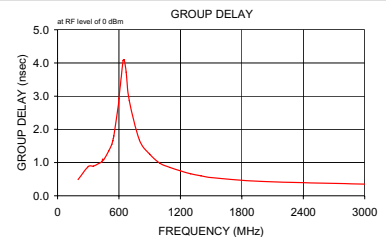
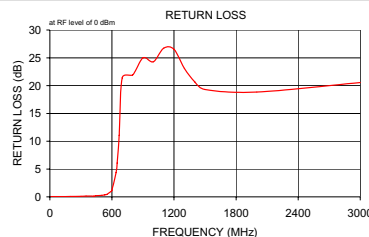
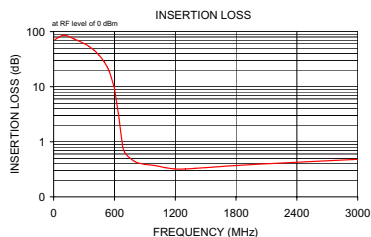


electrical schematic



Typical Performance Data

| Frequency (MHz) | Insertion Loss (dB) | Return Loss (dB) | Frequency (MHz) | Group Delay (nsec) |
|-----------------|---------------------|------------------|-----------------|--------------------|
| | \bar{x} | σ | | |
| 10.00 | 71.13 | 3.73 | 200.00 | 0.49 |
| 100.00 | 86.10 | 2.60 | 300.00 | 0.88 |
| 200.00 | 73.72 | 0.25 | 350.00 | 0.89 |
| 300.00 | 60.72 | 0.42 | 400.00 | 0.97 |
| 350.00 | 53.62 | 0.27 | 425.00 | 1.01 |
| 400.00 | 45.60 | 0.35 | 433.00 | 1.02 |
| 425.00 | 41.41 | 0.44 | 441.00 | 1.10 |
| 441.00 | 38.65 | 0.51 | 450.00 | 1.08 |
| 450.00 | 37.09 | 0.54 | 500.00 | 1.35 |
| 500.00 | 28.11 | 0.74 | 530.00 | 1.55 |
| 530.00 | 22.58 | 0.88 | 535.00 | 1.61 |
| 540.00 | 20.70 | 0.93 | 540.00 | 1.66 |
| 545.00 | 19.75 | 0.96 | 545.00 | 1.73 |
| 550.00 | 18.80 | 0.98 | 550.00 | 1.80 |
| 595.00 | 10.16 | 1.20 | 595.00 | 2.77 |
| 600.00 | 9.24 | 1.21 | 600.00 | 2.92 |
| 640.00 | 3.13 | 0.83 | 640.00 | 4.07 |
| 650.00 | 2.21 | 0.63 | 650.00 | 4.10 |
| 670.00 | 1.15 | 0.28 | 670.00 | 3.72 |
| 700.00 | 0.65 | 0.04 | 700.00 | 2.87 |
| 800.00 | 0.44 | 0.01 | 800.00 | 1.68 |
| 900.00 | 0.39 | 0.02 | 900.00 | 1.25 |
| 1000.00 | 0.37 | 0.02 | 1000.00 | 0.98 |
| 1100.00 | 0.34 | 0.01 | 1100.00 | 0.85 |
| 1200.00 | 0.32 | 0.01 | 1200.00 | 0.75 |
| 1300.00 | 0.32 | 0.01 | 1300.00 | 0.66 |
| 1400.00 | 0.33 | 0.02 | 1400.00 | 0.60 |
| 1500.00 | 0.34 | 0.02 | 1500.00 | 0.55 |
| 2000.00 | 0.39 | 0.02 | 2000.00 | 0.43 |
| 3000.00 | 0.48 | 0.02 | 3000.00 | 0.35 |



Mini-Circuits®
ISO 9001 ISO 14001 CERTIFIED

ALL NEW
minicircuits.com

P.O. Box 350166, Brooklyn, New York 11235-0003 (718) 934-4500 Fax (718) 332-4661 For detailed performance specs & shopping online see Mini-Circuits web site



The Design Engineers Search Engine Provides ACTUAL Data Instantly From MINI-CIRCUITS At: www.minicircuits.com

RF/IF MICROWAVE COMPONENTS

REV. C
M108294
SHP-700+
070723