

## FEATURES AND SPECIFICATIONS



## 2.54mm (.100") Pitch H-DAC 64™ Single Row Connector System

**31067** 3 Circuit In-line  
Connectors

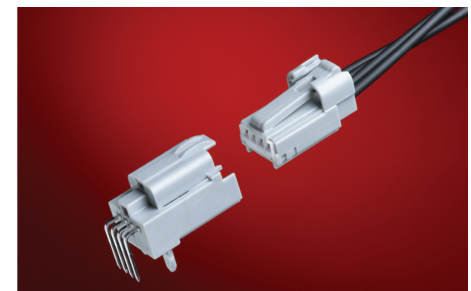
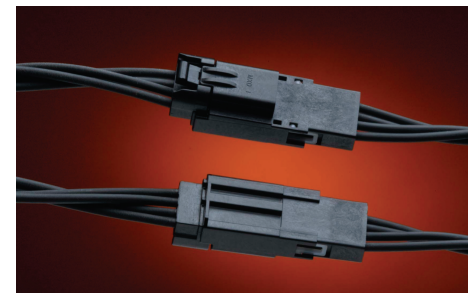
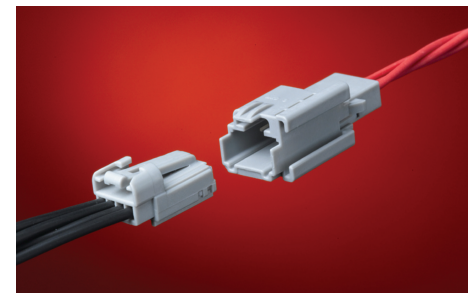
**31068** 4 Circuit In-line  
Connectors

**31072** 5 Circuit In-line  
Connectors

**31073** 6 Circuit In-line  
Connectors

**31101** 4 Circuit Vertical  
Header

**31100** 4 Circuit Right Angle  
Header



### **H-DAC 64 single row connectors offer a space-saving solution for low-circuit count-unsealed applications**

The H-DAC 64 single row product family was designed to offer a space-saving alternative to single row USCAR-designed connectors. The H-DAC 64 single row connection system meets all unsealed USCAR-2 class 2 requirements while offering a 33% reduction in package size.

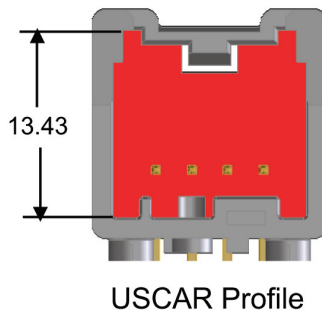
This versatile product line consists of vertical and right angle 4-circuit headers, plus male and female in-line

connectors available in 3 to 6 circuit configurations. Each terminal is capable of supporting both low-level signal as well as low-power applications up to 10.0A.

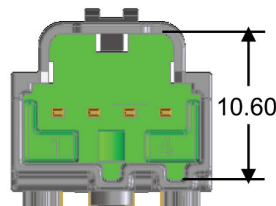
For additional information on H-DAC 64 single row products visit: [www.molex.com/link/hdac64single.html](http://www.molex.com/link/hdac64single.html).

### **Features and Benefits**

- Circuit Sizes: 1X3, 1X4, 1X5 and 1X6 product offering tooled in high-multiple cavitations to support customer's needs
- Scoop-proof housing protects against accidental bending of pins
- Three polarization options available in standard USCAR coloring scheme (black, gray and brown) providing color differentiation giving the operator visual aid during assembly to reduce the possibility of mating incorrect polarizations
- TPA feature provides increased final terminal retention.
- Positive lock provides audible click during mating offering feedback to operator to ensure mated system is secured in high-vibration systems
- Optional clip slot feature aids in vehicle routing by offering optional orientation clip attachment



USCAR Profile



Molex Profile

## SPECIFICATIONS

### **Reference Information**

Product Specifications :

PS-31067-0001, PS-31000-0001

Packaging:

Female and Male In-line Housings – Bulk Pack  
Headers – Tray Pack

Mates With:

Male and female In-line Housing:  
31067, 31068, 31072 and 31073  
Headers: 31101

Use With:

Tyco 'GET' male and female .64mm terminals

Tooling: Tyco Electronics

Designed In: Millimeters

### **Electrical**

Voltage (max.): 500V

Current (max.): 10A

Contact Resistance: 20 milliohms max.

Dielectric Withstanding Voltage: 500VDC

Insulation Resistance: 20 megohms min.

### **Mechanical/Electrical**

Mating Force: Less than 45N (10.1 lb)

Unmating Force: Less than 45N (10.1 lb)

Connector Retention (Primary latch): 110N (24.7 lb) min.

Contact Retention to Housing: 30N (6.7 lb) min.

Contact Insertion Force Into Housing: 30N (6.7 lb) max.

Connector Audible Feedback: 7dB over ambient

Polarization Feature Effectiveness: 100N min.

Durability (10 Cycles): 20 milliohms max.

Thermal Shock (Class 2, 100cycles): 20 milliohms max.

Vibration/Mechanical Shock (Class 2): 20 milliohms max.

Temperature/Humidity Cycling (Class 2): 20 milliohms max.

High temperature Exposure (Class 2): 20 milliohms max.

### **Physical**

Housing: SPS+ 30% Glass Filled

Contact: Copper Alloy

Plating:

Overplating – Overall Tin

Underplating – Overall Nickel

Operating Temperature: -40 to +100°C



# 2.54mm (.100") Pitch H-DAC 64™ Single Row Connector System

- Automotive
  - Sensors
  - Lighting, Switches

- Commercial
  - Sensors
  - Lighting, Switches



- 31067** 3 Circuit In-line Connectors
- 31068** 4 Circuit In-line Connectors
- 31072** 5 Circuit In-line Connectors
- 31073** 6 Circuit In-line Connectors
- 31101** 4 Circuit Vertical Header
- 31100** 4 Circuit Right Angle Header

## ORDERING INFORMATION

### Header Assemblies

Order No.	Orientation	Gender	Housing Assembly	Plant No. for Samples
31100-004*	Right Angle	Male	4 circuit header assembly with PCB hold down pegs	3109
31101-004*	Vertical	Male	4 circuit header assembly with PCB hold down pegs	3109

### Connector Housing Assemblies

Order No.	Component	Gender	Housing Assembly	Plant No. for Samples
31067-101*	Connector	Female	3 Circuit Receptacle	3109
31068-101*	Connector	Female	4 Circuit Receptacle	3109
31072-101*	Connector	Female	5 Circuit Receptacle	3109
31073-101*	Connector	Female	6 Circuit Receptacle	3109
31067-104*	Connector	Male	3 Circuit Plug	3109
31067-107*	Connector	Male	3 Circuit Plug, XMAS Tree Slot	3109
31068-104*	Connector	Male	4 Circuit Plug	3109
31068-107*	Connector	Male	4 Circuit Plug, XMAS Tree Slot	3109
31072-104*	Connector	Male	5 Circuit Plug	3109
31072-107*	Connector	Male	5 Circuit Plug, XMAS Tree Slot	3109
31073-104*	Connector	Male	6 Circuit Plug	3109
31073-107*	Connector	Male	6 Circuit Plug, XMAS Tree Slot	3109

\*Denotes Polarization Option 0=Option A-Black, 1=Option B-Grey, 2=Option C Brown

### H-DAC Product Family Terminal Selection Guide

Terminal Type	Source	Description	Ford P/N	Vendor P/N
0.64mm 'GET'	Tyco	18/20 AWG Tin Female	3F2T-14474-RA	1393366-1
	Tyco	22 AWG Tin Female	3F2T-14474-SA	1393367-1
	Tyco	18/20 AWG Tin Male	1L2T-14421-AA	2-1419158-5
	Tyco	22 AWG Tin Male	1L2T-14421-BA	1-1419158-6

[www.molex.com/link/hdac64single.html](http://www.molex.com/link/hdac64single.html)

**Americas Headquarters**  
Lisle, Illinois 60532 U.S.A.  
1-800-78MOLEX  
amerinfo@molex.com

**Asia Pacific North Headquarters**  
Yamato, Kanagawa, Japan  
81-46-265-2325  
apninfo@molex.com

**Asia Pacific South Headquarters**  
Jurong, Singapore  
65-6268-6868  
apsinfo@molex.com

**European Headquarters**  
Munich, Germany  
49-89-413092-0  
eurinfo@molex.com

**Corporate Headquarters**  
2222 Wellington Ct.  
Lisle, IL 60532 U.S.A.  
P: 630-969-4550 F: 630-969-1352