



PC-TFT-064VT4N1

Driving Board

Features

- Used for TFT-LCD display: 6" AND-TFT-064VT4N1
- Video input D-Sub VGA Signal
- Dual composite video channels
- Requires only +12V input
- Operating temperature: 0 °C ~ 60 °C
- Storage temperature: -20 °C ~ 70 °C
- **RoHS Compliant**

The PC-TFT-064VT4N1 is designed to work with the AND-TFT-064VT4N1-HB color TFT display which is suitable for security, video game, door phone, video phone, portable TV and instrument display applications.

Mechanical Characteristics

| Item | Specification | Unit |
|-------------------------|--------------------|------|
| Screen Size | 6.0 (diagonal) | inch |
| Outline Dimension | 85.0 x 66.0 x 12.1 | mm |
| Top Layer High (Max) | 7.0 | mm |
| Bottom Layer High (Max) | 3.9 | mm |
| Board Thickness | 1.2 | mm |
| Screws | D3.0 mm x 4 | — |

Absolute Maximum Rating

| Item | Symbol | Conditions | Min. | Max. | Unit |
|-----------------------|--------|------------|------|------|------|
| Operating Temperature | Top | — | 0 | 60 | °C |
| Storage Temperature | Tstg | — | -20 | 70 | °C |

Electrical Characteristics

| Symbol | I/O | Conditions | Min. | Typ. | Max. | Unit |
|--------|-----|------------|------|------|------|------|
| V in | I | DC (+) | 10 | 12 | 14 | V |
| I in | | DC (+12 V) | 700 | 730 | 760 | mA |
| P in | | | 8.40 | 8.76 | 9.12 | W |

Product specifications contained herein may be changed without prior notice.

It is therefore advisable to contact Purdy Electronics before proceeding with the design of equipment incorporating this product.



Driver Board Introduction

Port Definition

- CON1: External Signal Input Terminal (14pin)
- CON2: Keyboard Operation Connector (10 pin)
- CON3: Connector of Driver Board with LCD Module (TTL/30 pin)
- CON4: NC
- CON6: Connector of Driver Board with LCD B/L Driver Board (4 pin)

| Pin No. | Symbol | Input/Output | Min. |
|---------|--------|--------------|------------------------|
| 1 | Vin | Input | Vin |
| 2 | GND | Input | Ground |
| 3 | GND | Input | Ground |
| 4 | CVBS1 | Input | Composite Video |
| 5 | NC | Input | No connect |
| 6 | CVBS2 | Input | Composite Video |
| 7 | GND | Input | Ground |
| 8 | R | Input | VGA Red Signal Input |
| 9 | G | Input | VGA Green Signal Input |
| 10 | B | Input | VGA Blue Signal Input |
| 11 | GND | Input | Ground |
| 12 | H-SYNC | Input | HSYNC Input for VGA |
| 13 | V-SYNC | Input | VSYNC Input for VGA |
| 14 | GND | Input | Ground |

CON2 - Keyboard Operation Port (10 pin) Type: MOLEX 53261-1071 or compatible

| Pin | Definition | Pin | Definition | Pin | Definition |
|-----|------------|-----|------------|-----|------------|
| 1 | Auto | 5 | Power | 9 | LED-Green |
| 2 | RIGHT | 6 | +3.3 V | 10 | LED-Red |
| 3 | LEFT | 7 | GND | | |
| 4 | MENU | 8 | REMOTE | | |

CON3: 18 bit RGB Connector (30 pin) Type: MOLEX-87758-30 or compatible

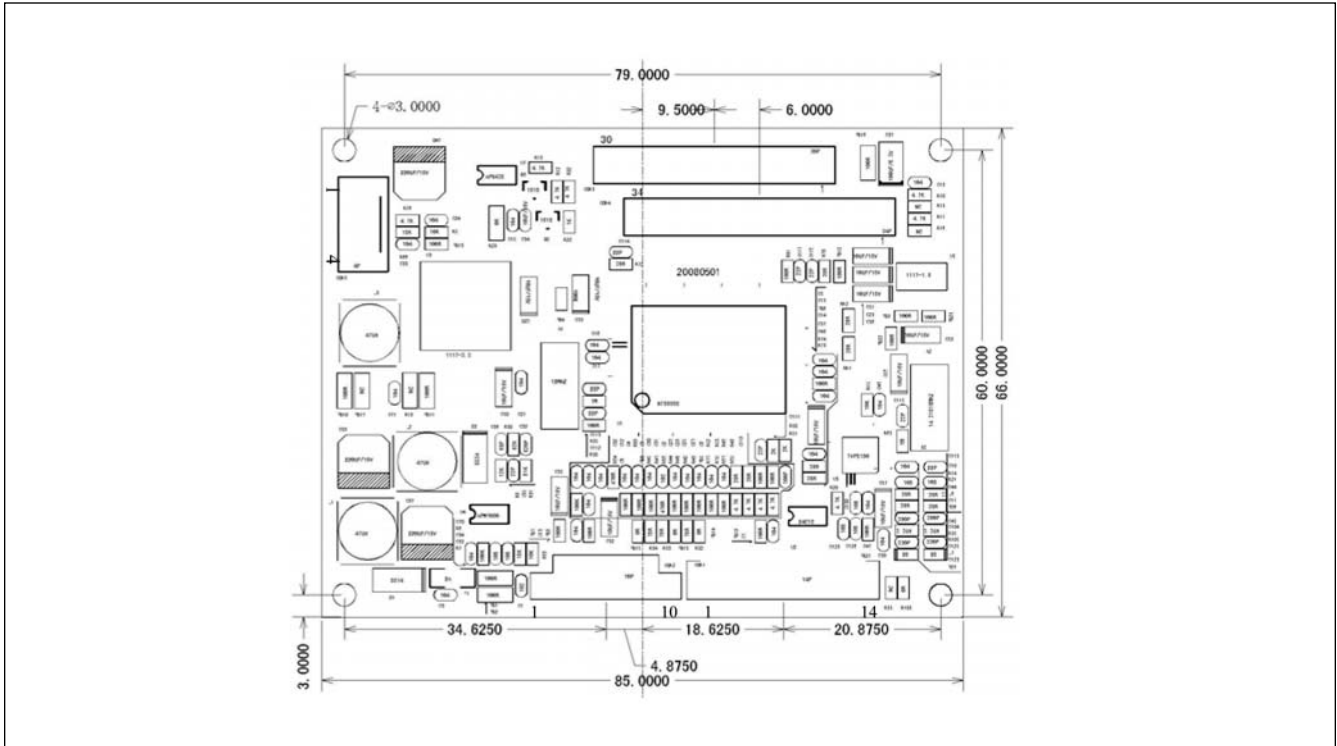
| Pin | Definition | Pin | Definition | Pin | Definition | Pin | Definition |
|-----|------------|-----|------------|-----|------------|-----|------------|
| 1 | CLK | 9 | R4 | 17 | G5 | 25 | GND |
| 2 | HSYNC | 10 | R5 | 18 | GND | 26 | DE |
| 3 | VSYNC | 11 | GND | 19 | B0 | 27 | VCC (+5V) |
| 4 | GND | 12 | G0 | 20 | B1 | 28 | VCC (+5V) |
| 5 | R0 | 13 | G1 | 21 | B2 | 29 | R/L |
| 6 | R1 | 14 | G2 | 22 | B3 | 30 | U/D |
| 7 | R2 | 15 | G3 | 23 | B4 | | |
| 8 | R3 | 16 | G4 | 24 | B5 | | |

CON6: Inverter Connector (4 pin) Type: JST B3B-XH-A or compatible

| Pin | Definition | Pin | Definition | Pin | Definition | Pin | Definition |
|-----|------------|-----|------------|-----|----------------|-----|--------------|
| 1 | +12 V | 2 | GND | 3 | On/Off (Note1) | 4 | DIM (Note 2) |

Note 1: Backlight control switch (ON: 1.5 ~ 5V, OFF: 0 ~1.5V)
 Note 2: Brightness control (0 ~ 5V)

Driver Board Outline Drawing



Item List

| | | | | | |
|--------------|----------|--------------------|--|--------------------------|-----------|
| DRIVER BOARD | | CABLE FOR DEMO KIT | | PANEL CABLE FOR PD064VT4 | |
| | | | | | |
| DEMO KIT | KEYBOARD | CABLE FOR KEYBOARD | | B/L DRIVER BOARD | B/L CABLE |
| | | | | | |