

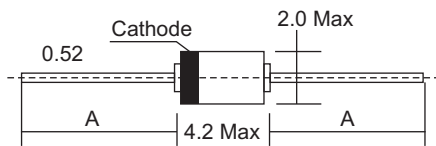
## SPECIFICATIONS

Parameters	Symbol	*(DMM)DB3	*(DMM)DB4	Units
Breakover Voltage	V(BR)1, V(BR)2	28	35	V min
		32	40	V typ
		36	45	V max
Breakover Voltage Symmetry	$ V(BR)1 - V(BR)2 $	3	3	V max
Dynamic Breakback Voltage	$I \pm V$	5	5	V max
Breakover Current	I(BR)1 AND I(BR)2	50	50	A max
Peak Pulse Current for 10 $\mu$ s, 120pps, TA 4°C	IP	2.0	2.0	A max

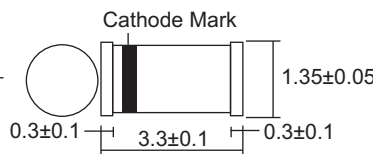
\* DMMDB3 & DMMDB4 are DL-35 (mini-MELF).  
DB3 & DB4 are DO-35.

## DIMENSIONS

DO-35 Glass Case Outline Drawing (mm)

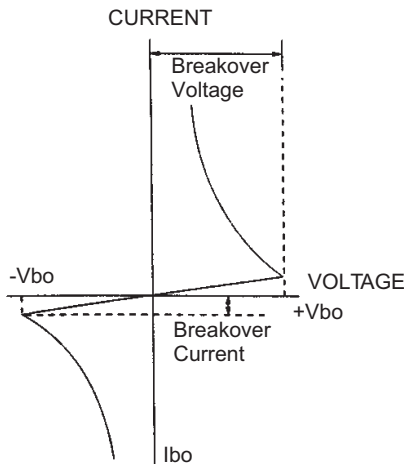


MINI-MELF Drawing (mm)

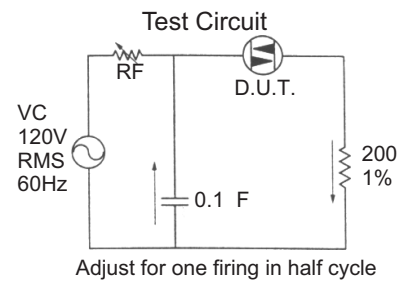
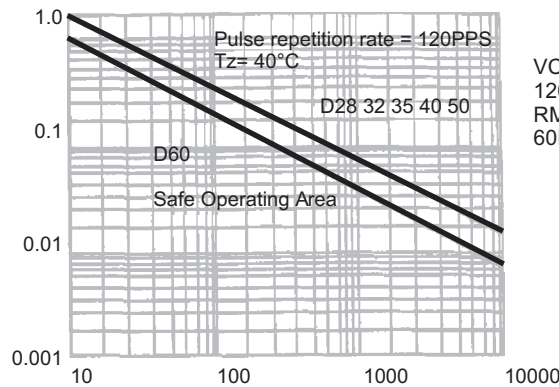


## CURVES

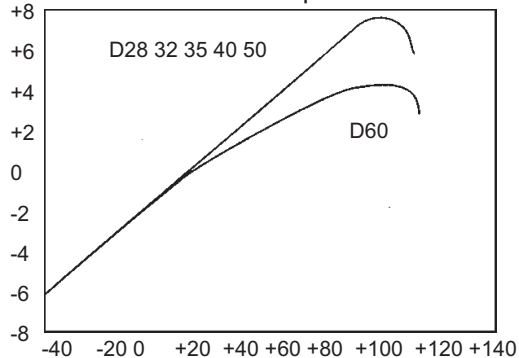
V-I Characteristics



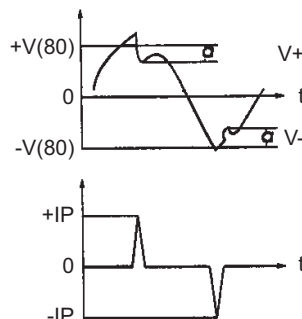
Repetitive Peak On-State Current vs Pulse Duration



Normalized VBO Change vs Junction Temperature



Test Circuit Waveforms



## PART NUMBER EXAMPLE

DMM DB3 R

- Packaging**
- R - Tape & Reel
- A - Tape & Ammo
- B - Bulk Packaging
- Series**
- DM3 for 32 volts.
- DM4 for 40 volts.
- Surface mount.**
- Omit for thru hole.