

Power Inductor CDEPI115ME



■ Features

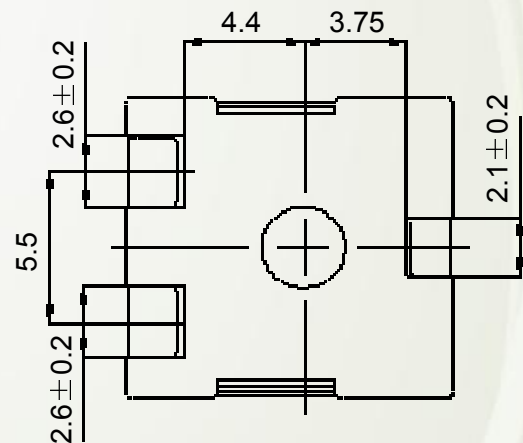
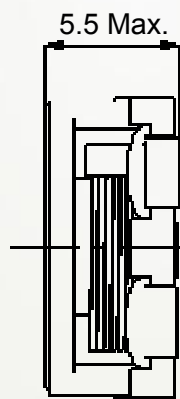
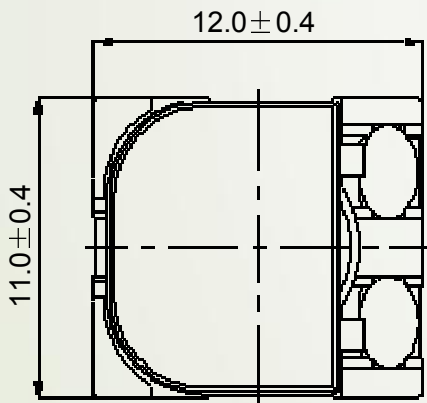
- ⊙ Magnetically shielded construction.
- ⊙ Storage temperature range: $-40^{\circ}\text{C}\sim+125^{\circ}\text{C}$.
- ⊙ Operating temperature range: $-40^{\circ}\text{C}\sim+125^{\circ}\text{C}$ (including coil's self-heat).
- ⊙ Qualification to AEC-Q200.
- ⊙ RoHS Compliance.

■ Applications

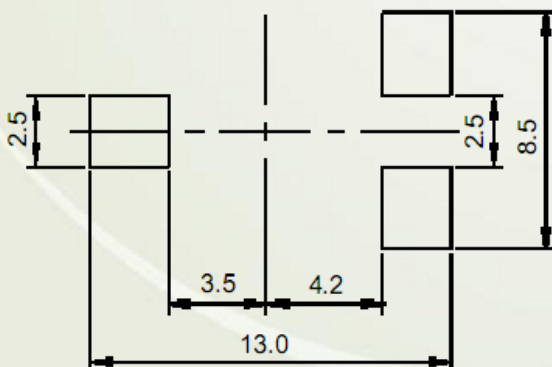
Ideally used in Automotive, etc.

■ Shapes and Dimensions/Recommended Land Patterns (mm)

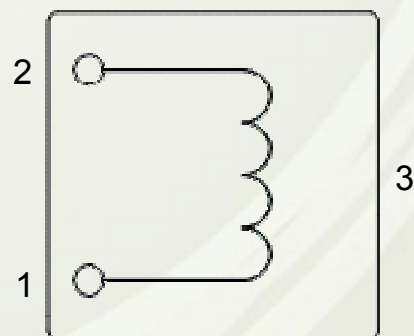
◆ Dimensions



◆ Land pattern



◆ Schematics (Bottom)



Power Inductor CDEPI115ME



■Electrical Characteristics specification.

Sumida P/N	Inductance (μ H) 100KHz/1V	D.C.R. ($m\Omega$) Max. (Typ.) at 20°C	Saturation Current (A) ※1 at 20°C	Temperature Rise Current (A) ※2
CDEPI115MENP-R27PC	0.27 \pm 25%	1.72(1.43)	42.0	16.3
CDEPI115MENP-R62PC	0.62 \pm 25%	2.77(2.31)	27.0	13.3
CDEPI115MENP-1R0PC	1.0 \pm 25%	4.28(3.57)	22.0	10.5
CDEPI115MENP-1R6PC	1.6 \pm 25%	6.73(5.61)	16.5	8.4
CDEPI115MENP-2R4PC	2.4 \pm 25%	9.85(8.21)	14.5	6.9
CDEPI115MENP-3R3PC	3.3 \pm 25%	14.3(11.9)	12.0	5.8
CDEPI115MENP-4R3PC	4.3 \pm 25%	16.3(13.6)	10.0	5.4
CDEPI115MENP-5R6PC	5.6 \pm 25%	22.6(18.8)	9.0	4.7

※1、 Saturation Current: This indicates the value of DC current when the inductance decreases to 80% of its nominal value.

※2、 Temperature Rise Current: The actual current when temperature of coil becomes $\Delta T=40^{\circ}\text{C}$. ($T_a=20^{\circ}\text{C}$)

For More Information

Hong Kong

Tel.+852-2880-6688
FAX.+852-2565-9600

Shanghai

Tel.+86-021-58363299
FAX.+86-021-58363266

Shenzhen

Tel.+86-755-82910228
FAX.+86-755-82910338

Taipei

Tel.+886-2-27065228
FAX.+886-2-27065229

Tokyo

Tel.+81-3-5202-7112
FAX.+81-3-5202-7105

Seoul

Tel.+82-2-6237-0777
FAX.+82-2-6237-0778

Singapore

Tel.+65-6296-3388
FAX.+65-6296-3390

Malaysia

Tel.+60-3-8733-0900
FAX.+60-3-8737-7384

Chicago

Tel.+1-847-545-6700
FAX. +1-847-545-6720

California

Tel.+1-408-321-9660
FAX. +1-408-321-9308