

5A Low-dropout Positive Linear Regulator

FEATURES

- Dropout voltage 1.3V at 5A output current.
- Fast transient response.
- Extremely tight line and load regulation.
- Current limiting and thermal protection.
- Adjustable output voltage or fixed at 1.5V, 1.8V, 2.5V, 3.3V.
- Standard 3-pin power packages.

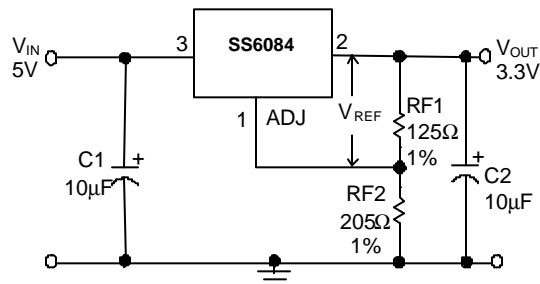
APPLICATIONS

- Motherboard I/O Power Supplies.
- Microprocessor Power Supplies.
- High-Current Regulators.
- Post-regulator for Switching Supplies.

DESCRIPTION

The SS6084 is a low-dropout three-terminal linear regulator with 5A output current capability. The output voltage is adjustable with a resistor divider or fixed at 1.5V, 1.8V, 2.5V or 3.3V. Dropout voltage is guaranteed to be a maximum of 1.4V at the maximum output current. This low dropout voltage and fast transient response make the SS6084 ideal for low-voltage microprocessor applications. Current and thermal limiting provide protection against overload conditions that would create excessive junction temperatures.

TYPICAL APPLICATION CIRCUIT



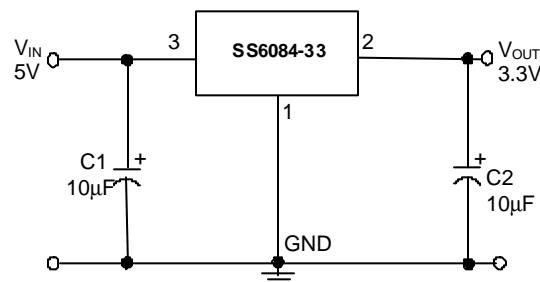
$$V_{REF} = V_{OUT} - V_{ADJ} = 1.25V \text{ (typ.)}$$

$$V_{OUT} = V_{REF} \times (1 + R_{F2}/R_{F1}) + I_{ADJ} \times R_{F2}$$

$$I_{ADJ} = 55\mu A \text{ (typ.)}$$

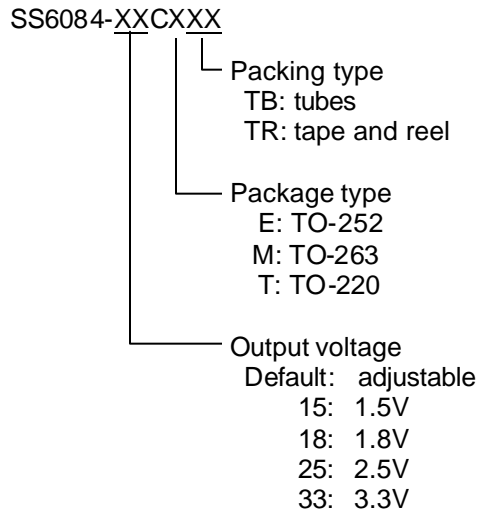
- (1) C1 is needed if the device is physically far from the filter capacitors.
- (2) C2 is required for stability.

Adjustable Voltage Regulator



Fixed Voltage Regulator

ORDERING INFORMATION

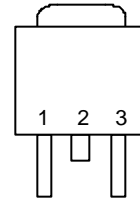


Example: SS6084-15CETR
 → 1.5V fixed output in TO-252
 shipped in tape and reel

PIN CONFIGURATION

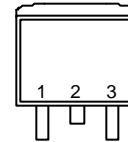
TO-252
TOP VIEW

1: ADJ (GND)
2: VOUT (TAB)
3: VIN



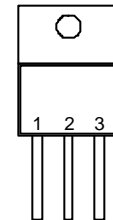
TO-263
TOP VIEW

1: ADJ (GND)
2: VOUT (TAB)
3: VIN



TO-220
FRONT VIEW

1: ADJ (GND)
2: VOUT (TAB)
3: VIN



ABSOLUTE MAXIMUM RATINGS

VIN pin to ADJ/GND pin.....	7V
Operating Junction Temperature Range	0°C~ 125°C
Storage Temperature Range.....	- 65°C ~ 150°C
Thermal Resistance Junction to Case TO-252.....	12.5°C/W
TO-263, TO-220	3°C /W
Thermal Resistance Junction to Ambient TO-252	100°C/W
(Assume no ambient airflow, no heatsink) TO-263	60°C /W
TO-220	50°C /W
Lead Temperature (Soldering) 10 sec.....	260°C

TEST CIRCUIT

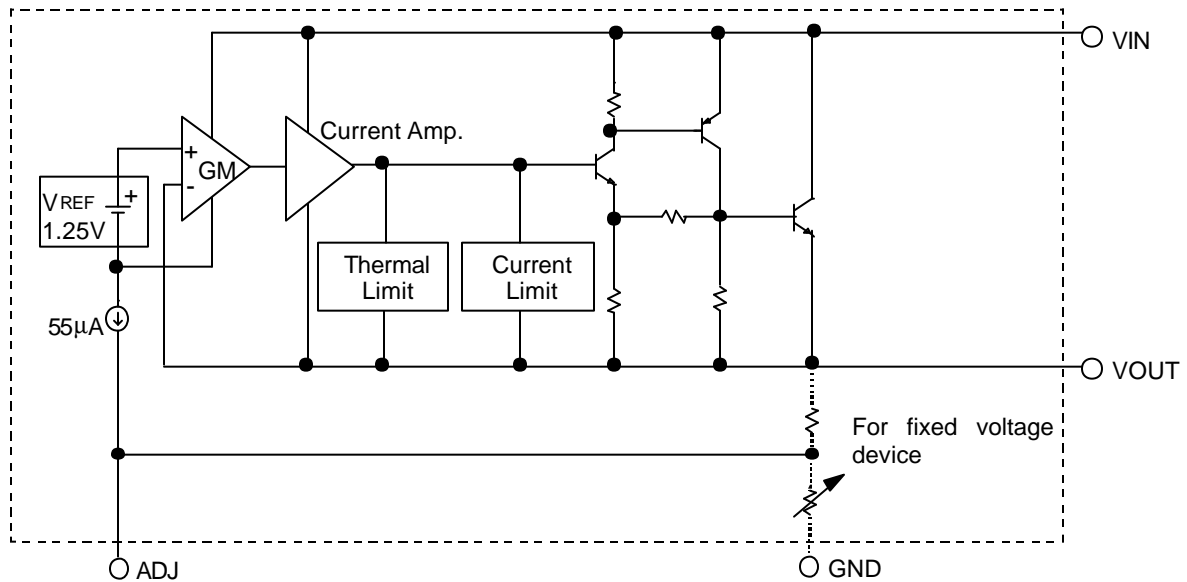
Refer to TYPICAL APPLICATION CIRCUIT.

ELECTRICAL CHARACTERISTICS

($V_{IN}=5V$, $T_J=25^\circ C$, $I_O=10mA$, unless otherwise specified)

PARAMETER	TEST CONDITIONS	MIN.	TYP.	MAX.	UNIT
Reference Voltage	SS6084 (ADJ) $T_J=25^\circ C$	1.238	1.25	1.262	V
Output Voltage	SS6084-15, $V_{IN}=5V$ SS6084-18, $V_{IN}=5V$ SS6084-25, $V_{IN}=5V$ SS6084-33, $V_{IN}=5V$	1.48 1.78 2.47 3.26	1.50 1.80 2.50 3.30	1.52 1.82 2.53 3.34	V
Line Regulation	ADJ : $2.65V \leq V_{IN} \leq 7V$ $V_{OUT}=1.25V$ Fix : $V_{OUT}+1.4V \leq V_{IN} \leq 7V$ $T_J=25^\circ C$		0.015	0.2	%
Load Regulation	$10mA < I_O < 5A$ $T_J=25^\circ C$			0.6	%
Dropout Voltage	ΔV_{OUT} , $\Delta V_{REF}=1\%$ $10mA \leq I_O \leq 5A$ $0^\circ C \leq T_J \leq 125^\circ C$		1.3	1.4	V
Current Limit	$0^\circ C \leq T_J \leq 125^\circ C$	5	6		A
Adjusted Pin Current	$2.65V \leq V_{IN} \leq 7V$		55	120	μA
Adjusted Pin Current Change (ΔI_{ADJ})	$2.65V \leq V_{IN} \leq 7V$ $0^\circ C \leq T_J \leq 125^\circ C$		0.2	5	μA
Temperature Stability	$I_O=0.5A$ $0^\circ C \leq T_J \leq 125^\circ C$		0.5		%
Minimum Load Current	$0^\circ C \leq T_J \leq 125^\circ C$		5	10	mA
RMS Output Noise (% of V_{OUT})	$10Hz \leq f \leq 10KHz$		0.003		%
Ripple Rejection Ratio	120Hz input ripple $C_{OUT}=25\mu F$ $(V_{IN}-V_{OUT})=3V$	60	72		dB

BLOCK DIAGRAM



PIN DESCRIPTIONS

- ADJ PIN - Providing $V_{REF}=1.25V$ (typ.) for adjustable V_{OUT} . $V_{REF}=V_{OUT}-V_{ADJ}$ and $I_{ADJ}=55\mu A$ (typ.)
- GND PIN- Power ground.
- VOUT PIN - Adjustable output voltage.
- VIN PIN - Power Input.

TYPICAL PERFORMANCE CHARACTERISTICS

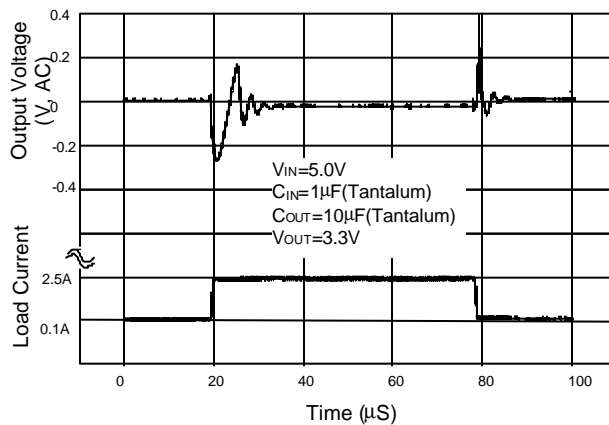


Fig. 1 Load Transient Response

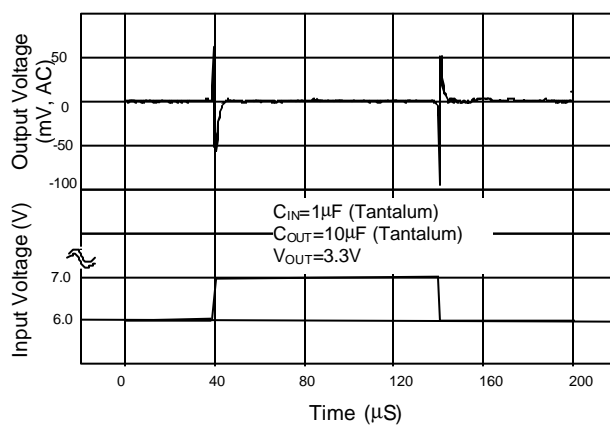


Fig. 2 Line Transient Response

TYPICAL PERFORMANCE CHARACTERISTICS (Continued)

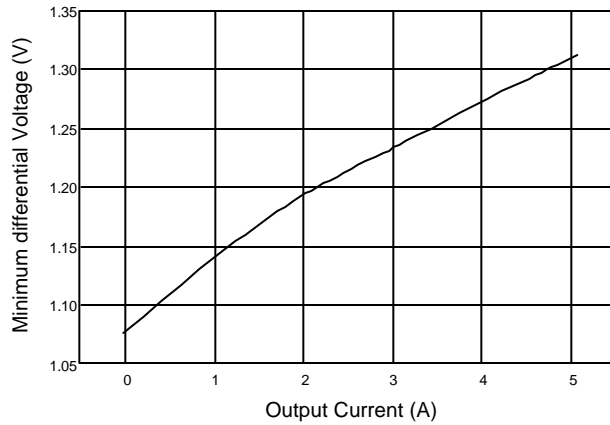


Fig. 3 Dropout Voltage ($V_{OUT}=3.3V$)

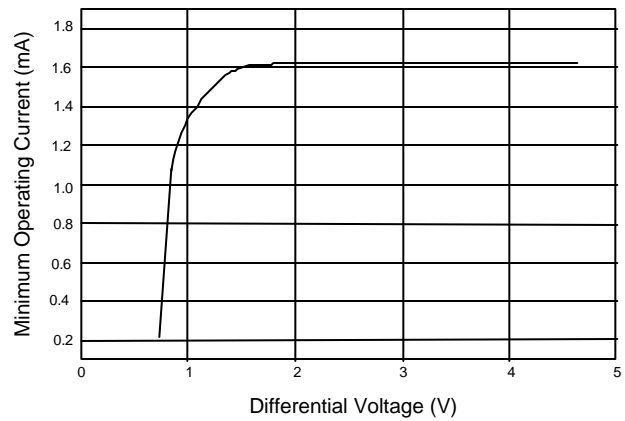


Fig. 4 Minimum Operating Current

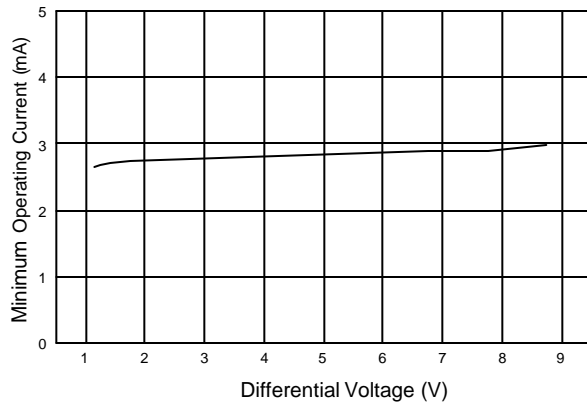


Fig. 5 Minimum Operating Current

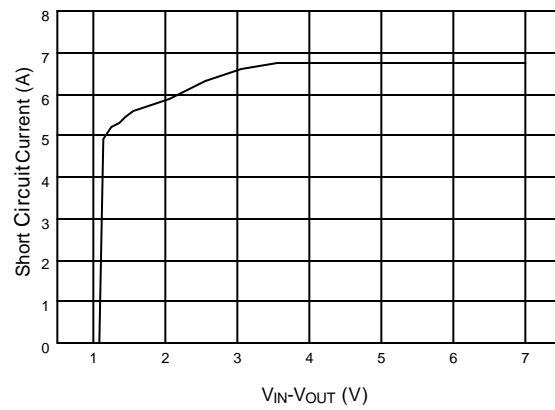


Fig. 6 SS6084 (ADJ.) Short Circuit Current

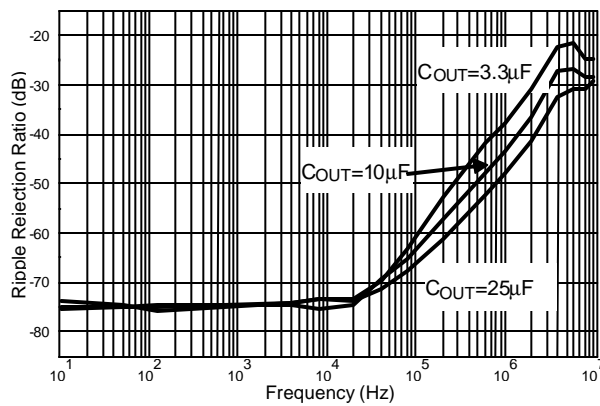
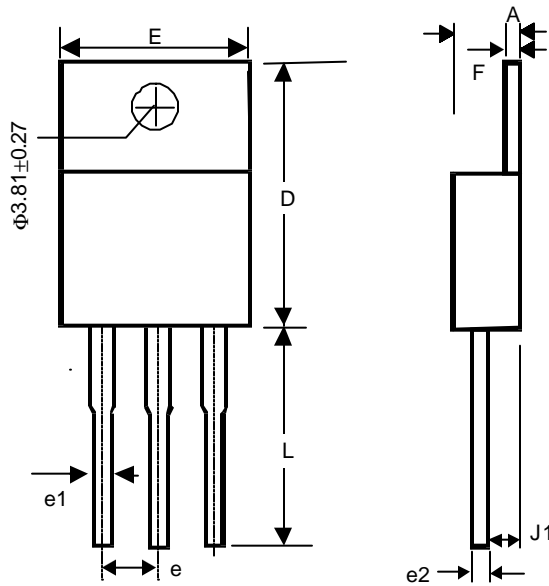


Fig. 7 SS6084 (ADJ.) Ripple Rejection

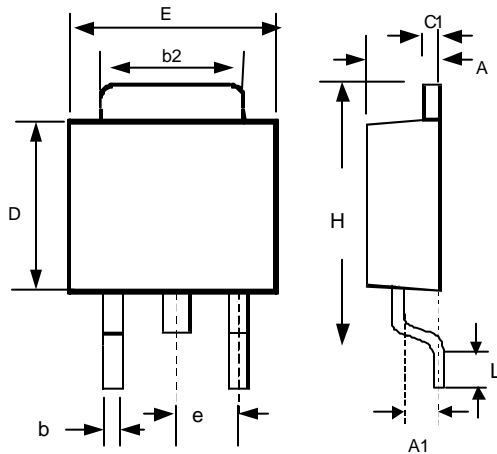
PHYSICAL DIMENSIONS

● TO-220 (unit: mm)



SYMBOL	MIN	MAX
A	3.56	4.82
D	14.23	16.51
E	9.66	10.66
e	2.29	2.79
e1	0.50	1.15
e2	-	1.10
F	0.51	1.39
J1	2.04	2.92
L	12.70	14.73

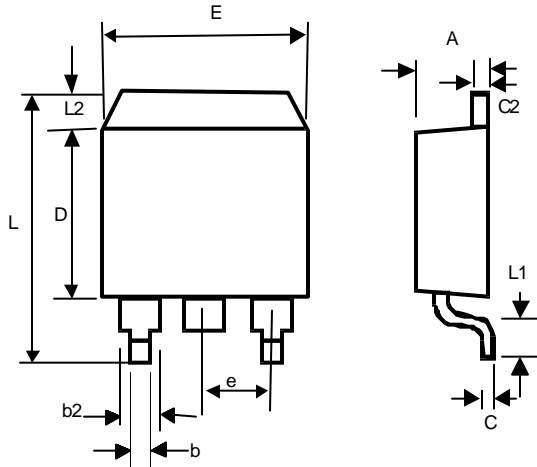
● TO-252 (unit: mm)



SYMBOL	MIN	MAX
A	2.19	2.38
A1	1.02	1.27
b	0.64	0.88
b2	5.21	5.46
C1	0.46	0.58
D	5.33	5.59
E	6.35	6.73
e	2.28 (TYP.)	
H	9.40	10.42
L	0.51	-

PHYSICAL DIMENSIONS (cont.)

- TO-263 (unit: mm)



SYMBOL	MIN	MAX
A	4.06	4.83
b	0.50	1.00
b2	1.14	1.40
C	-	0.7
c2	1.14	1.40
D	8.63	9.66
E	9.65	10.29
e	2.54 (TYP.)	
L	14.60	15.88
L1	2.28	2.80
L2	-	1.40

Information furnished by Silicon Standard Corporation is believed to be accurate and reliable. However, Silicon Standard Corporation makes no guarantee or warranty, express or implied, as to the reliability, accuracy, timeliness or completeness of such information and assumes no responsibility for its use, or for infringement of any patent or other intellectual property rights of third parties that may result from its use. Silicon Standard reserves the right to make changes as it deems necessary to any products described herein for any reason, including without limitation enhancement in reliability, functionality or design. No license is granted, whether expressly or by implication, in relation to the use of any products described herein or to the use of any information provided herein, under any patent or other intellectual property rights of Silicon Standard Corporation or any third parties.