

AC Power Line Choke

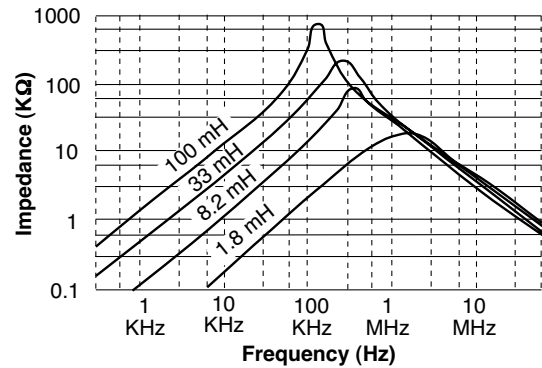
EPZ3050M-XXX

- Used as AC Power Line Filters in CTV, VTR, Audios, PC's, Facsimilies and Power Supply Applications
- UL940-V Recognized Materials
- Temperature Rise : 45°C Max.
- UL1446 Insulating System
- 2000 Vrms Isolation

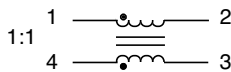
Electrical Parameters @ 25° C

Part Number	Inductance (mH Min.) [Pins 1-2, 4-3]	Current Rating (A rms Max.)
EPZ3050M-501	0.5	1.0
EPZ3050M-701	0.7	0.9
EPZ3050M-801	0.8	0.8
EPZ3050M-102	1.0	0.7
EPZ3050M-152	1.5	0.6
EPZ3050M-252	2.5	0.5
EPZ3050M-352	3.5	0.4
EPZ3050M-602	6.0	0.3
EPZ3050M-123	12	0.2
EPZ3050M-303	30	0.1

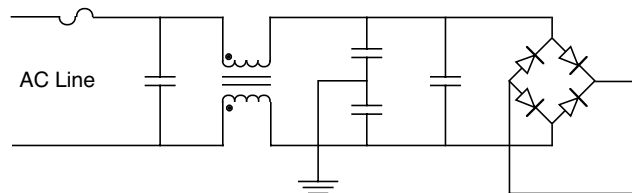
Impedance Characteristics



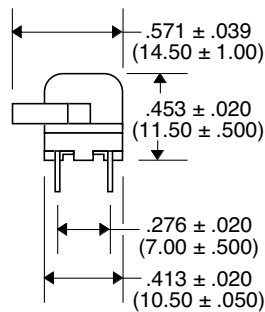
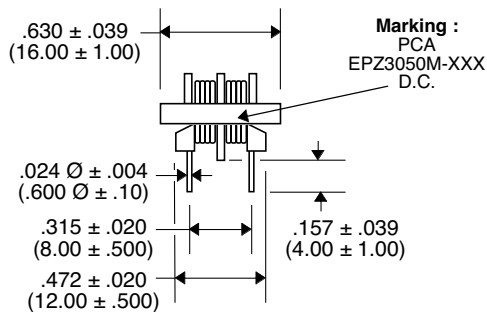
Schematic



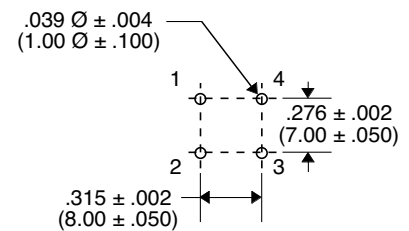
Circuit Sample



Package



Recommended PWB Piercing Plan



Unless Otherwise Specified Dimensions are in Inches /mm ±.010 /.25