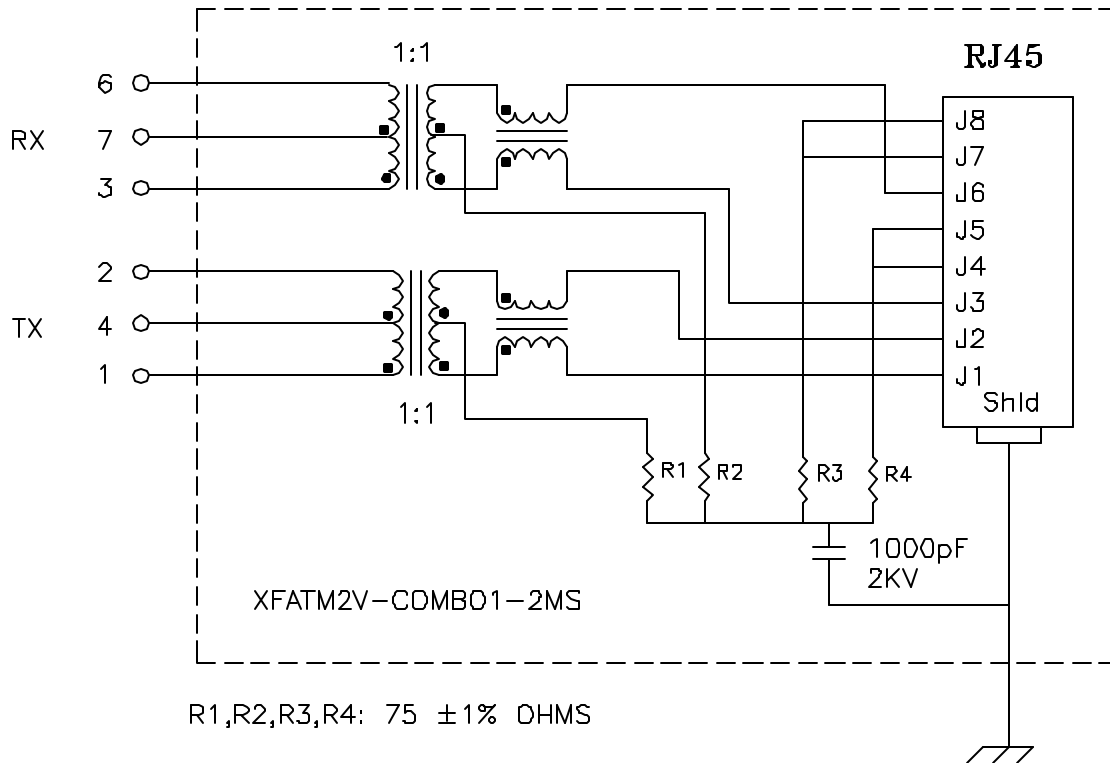


Schematic:



Electrical Specifications: @25°C

Isolation Voltage: 1500 Vac
 Isolation Voltage: 500 Vac (1+2+3+5+6+7)
 UTP SIDE OCL: 350uH Min @100KHz 100mV 8mADC
 Rise Time (10-90%): 2.5ns Typical
 Insertion Loss (300KHz-100MHz): -1.1dB Maximum
 Insertion Loss (100MHz-125MHz): -1.5dB Maximum
 Return Loss: -12dB Typical @300KHz - 100MHz
 Crosstalk:
 100KHz-60MHz -40dB Typical
 60MHz-100MHz -38dB Typical
 Common Mode to Differential Mode Rejection:
 1MHz-100MHz -30dB Typ (Tx) / -30dB Typ (Rx)
 200MHz -20dB Typ (Tx) / -20dB Typ (Rx)

Notes

1. Solderability: Leads shall meet ML-STD-202, Method 208D for solderability
2. Flammability: UL94V-D
3. ASTM oxygen index > 28%
4. Insulation System: Class F 155°C UL file E121535
5. Operating Temperature Range All listed parameters are to be within tolerance from -40°C to +85°C
6. Storage Temperature Range: -55°C to +125°C
7. Aqueous wash compatible

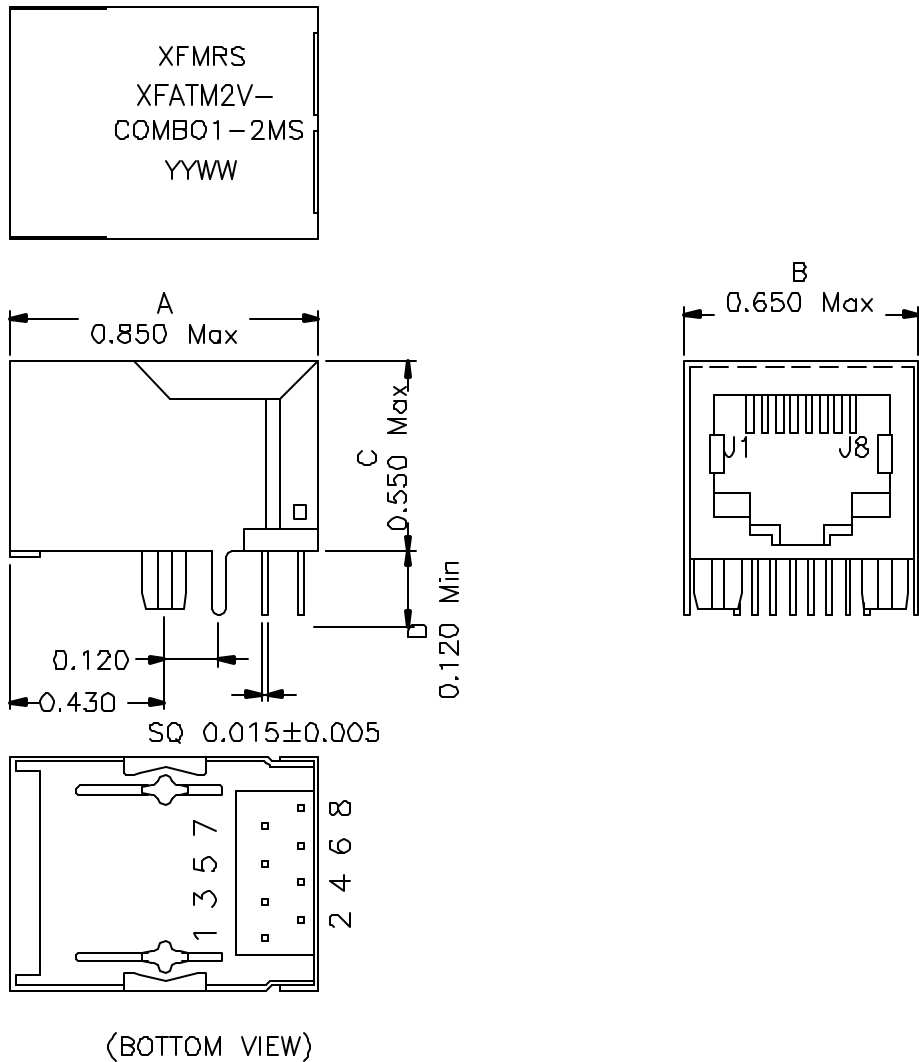
DOC. REV: A/3

XFMS Inc. UNLESS OTHERWISE SPECIFIED TOLERANCES: .xxx ±0.010 Dimensions in Inch SHEET 1 OF 2	Title: SINGLE PORT COMBO	
	P/N: XFATM2V-COMBO1-2MS	REV. A
	DWN. 李小锋	Feb-10-04
	CHK. 廖玉坤	Feb-10-04
APP. MS	Feb-10-04	

PROPRIETARY:

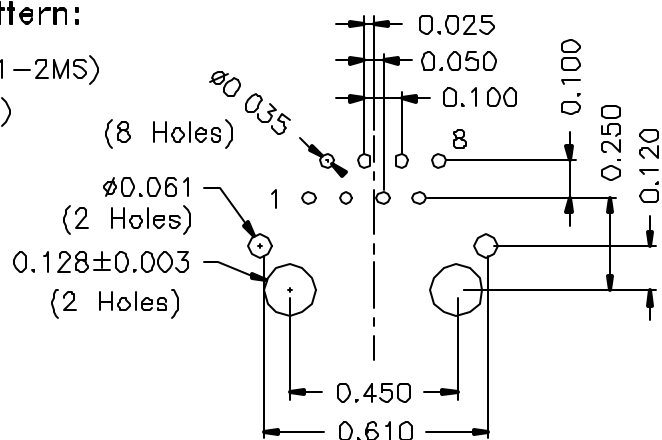
Document is the property of XFMS Group & is not allowed to be duplicated without authorization.

Mechanical Dimensions:



Mounting Pattern:

(FOR COMBO1-2MS)
(COMP SIDE)



DOC. REV: A/3

XFMR5 Inc.

Title: Mechanical Dimensions
For COMBO1-2MS Series

UNLESS OTHERWISE SPECIFIED
TOLERANCES:
.xxx ±0.010
Dimensions in Inch

P/N: XFATM2V-COMBO1-2MS

REV. A

DWN.

廖玉坤

Feb-10-04

CHK.

李清儿

Feb-10-04

SHEET 2 OF 2

APP.

MS

Feb-10-04

PROPRIETARY:

Document is the property of XFMR5 Group & is not allowed to be duplicated without authorization.