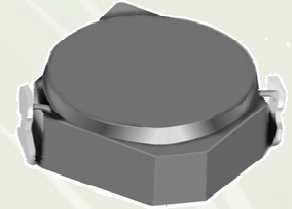


SMD Power Inductor CDRH6D18/HP



■ Features

- ◎ 7.0 × 7.0mm Max.(L × W),2.0mm Max. Height.
- ◎ Operating temperature range: -40°C~+105°C.
- ◎ RoHS and Halogen-Free Compliance.

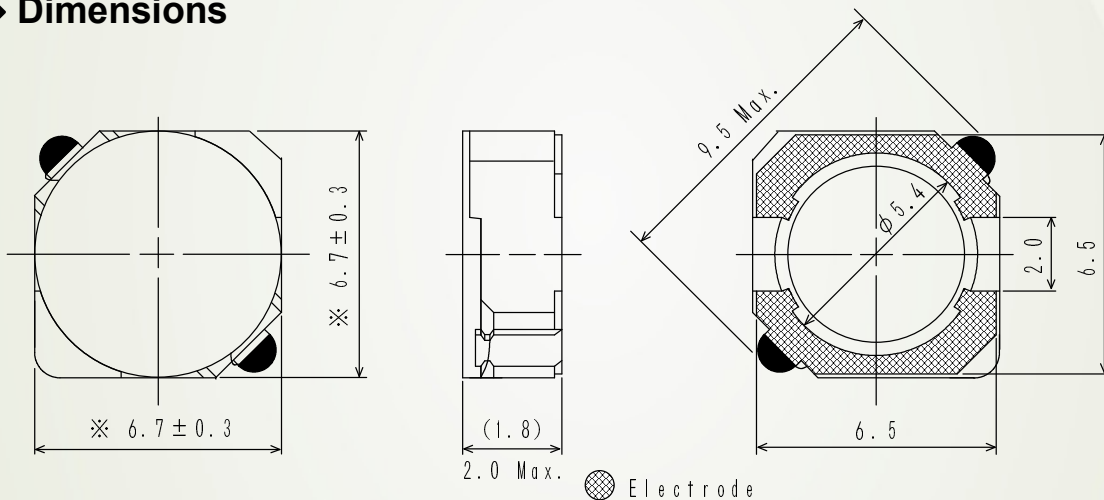


■ Applications

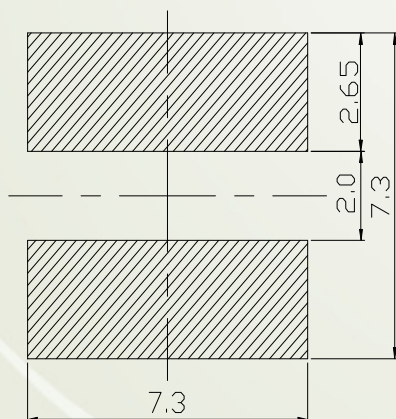
Surface mount inductor for PDA,HDD,DSC/DVC, etc.

■ Shapes and Dimensions/Recommended Land Patterns(mm)

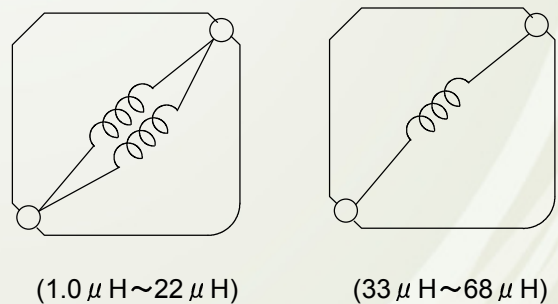
◆ Dimensions



◆ Land pattern (mm)



◆ Schematics (Bottom)



SMD Power Inductor CDRH6D18/HP



■Electrical Characteristics specification.

Part Name ※	Stamp	Inductance (μH)	D.C.R.($\text{m}\Omega$) (at 20°C)	Saturation Current (A) ※1		Temperature Rise current (A) ※2
				at 20°C	at 105°C	
CDRH6D18HPNP-1R0PC	1R0	1.0 \pm 25%	18.5 \pm 25%	5.50	4.60	4.00
CDRH6D18HPNP-1R8PC	1R8	1.8 \pm 25%	24.0 \pm 25%	4.50	3.50	3.50
CDRH6D18HPNP-2R7PC	2R7	2.7 \pm 25%	35.5 \pm 25%	3.60	3.00	2.75
CDRH6D18HPNP-3R9PC	3R9	3.9 \pm 25%	45.5 \pm 25%	3.00	2.50	2.35
CDRH6D18HPNP-4R7PC	4R7	4.7 \pm 25%	53.0 \pm 25%	2.80	2.35	2.20
CDRH6D18HPNP-6R8PC	6R8	6.8 \pm 25%	82.0 \pm 25%	2.35	1.95	1.70
CDRH6D18HPNP-8R2PC	8R2	8.2 \pm 25%	98.0 \pm 25%	2.10	1.80	1.50
CDRH6D18HPNP-100PC	100	10 \pm 25%	125 \pm 25%	1.95	1.60	1.30
CDRH6D18HPNP-150PC	150	15 \pm 25%	190 \pm 25%	1.60	1.30	1.10
CDRH6D18HPNP-220PC	220	22 \pm 25%	220 \pm 25%	1.35	1.10	1.00
CDRH6D18HPNP-330PC	330	33 \pm 25%	374 \pm 25%	1.10	0.90	0.70
CDRH6D18HPNP-470PC	470	47 \pm 25%	535 \pm 25%	0.90	0.70	0.60
CDRH6D18HPNP-560PC	560	56 \pm 25%	605 \pm 25%	0.85	0.65	0.55
CDRH6D18HPNP-680PC	680	68 \pm 25%	758 \pm 25%	0.70	0.60	0.50
CDRH6D18HPNP-820PC	820	82 \pm 25%	859 \pm 25%	0.65	0.58	0.45
CDRH6D18HPNP-101PC	101	100 \pm 25%	970 \pm 25%	0.60	0.55	0.40
CDRH6D18HPNP-121PC	121	120 \pm 25%	1290 \pm 25%	0.58	0.50	0.35

※1. Saturation Current: The DC current at which the inductance decreases to 70% of it's nominal value.

※2. Temperature rise current: The DC current at which the temperature rise is $\Delta t=40^{\circ}\text{C}$. ($T_a=20^{\circ}\text{C}$)

For More Information

Hong Kong

Tel.+852-2880-6688
FAX.+852-2565-9600

Shanghai

Tel.+86-021-58363299
FAX.+86-021-58363266

Shenzhen

Tel.+86-755-82910228
FAX.+86-755-82910338

Taipei

Tel.+886-2-27065228
FAX.+886-2-27065229

Tokyo

Tel.+81-3-5202-7112
FAX.+81-3-5202-7105

Seoul

Tel.+82-2-6237-0777
FAX.+82-2-6237-0778

Singapore

Tel.+65-6296-3388
FAX.+65-6296-3390

Malaysia

Tel.+60-3-8733-0900
FAX.+60-3-8737-7384

Chicago

Tel.+1-847-545-6700
FAX.+1-847-545-6720

California

Tel.+1-408-321-9660
FAX.+1-408-321-9308