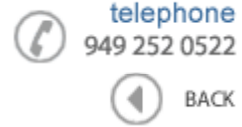




Data Sheet



Product Category: IF SAW Filter

Part Number	Package	Application	Last Modified
813-SL300.0M-02	13.3 x 6.5 SMD	IF SAW Filter	Jan 01, 2007

TYPE :
300.0 MHz IF SAW Filter



PART NUMBER :
813-SL300.0M-02

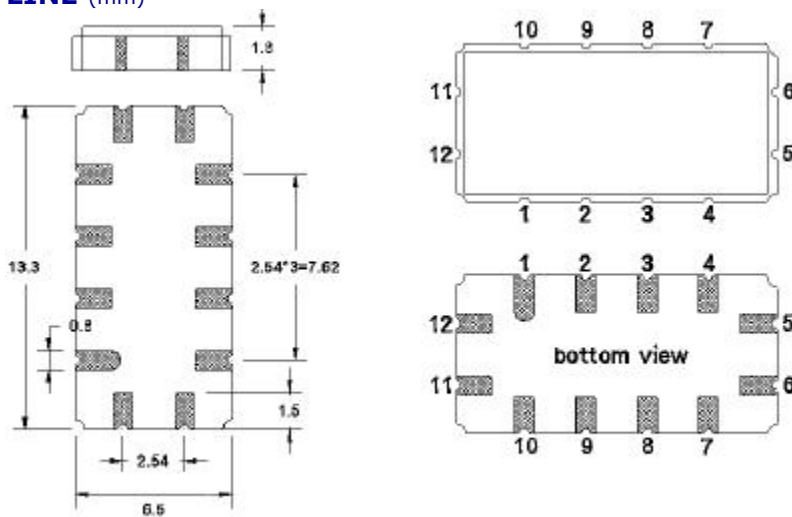
OPERATING CONDITIONS / ELECTRICAL CHARACTERISTICS

PARAMETERS	Minimum	Typical	Maximum	Units
Center Frequency (Fo)	-	300.0	-	MHz
Insertion Loss at Fo	-	17.5	-	dB
Source Impedance (single ended)*	-	50	-	ohm
Load Impedance (single ended)*	-	50	-	ohm
Temperature Coefficient	-	-0.03	-	ppm/C
Amplitude Ripple	-	1.0	1.5	dBp-p
1dB Bandwidth	2.0	2.54	-	MHz
3dB Bandwidth	3.0	3.66	-	MHz
40dB Bandwidth	-	9.74	11.0	MHz
Relative Attenuation:	-			
Lower Sidelobe	50	55	-	dB
Upper Sidelobe	50	55	-	dB
Absolute Delay at Fo	-	0.509	1.2	us
Group Delay Variation	-	150	200	ns
Ambient Temperature	-	25	-	C

*With Matching Network (Ref. Testing Environment Circuit as Shown Below).

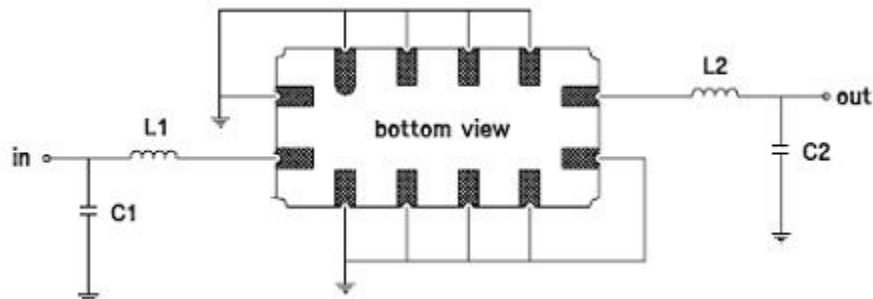
Those impedances could be modified with different impedance values and/or structures, if necessary

PACKAGE OUTLINE (mm)



PIN Descriptions: IN – 11, OUT – 5, GROUND - 1,2,3,4,6,7,8,9,10,12

TEST CIRCUIT

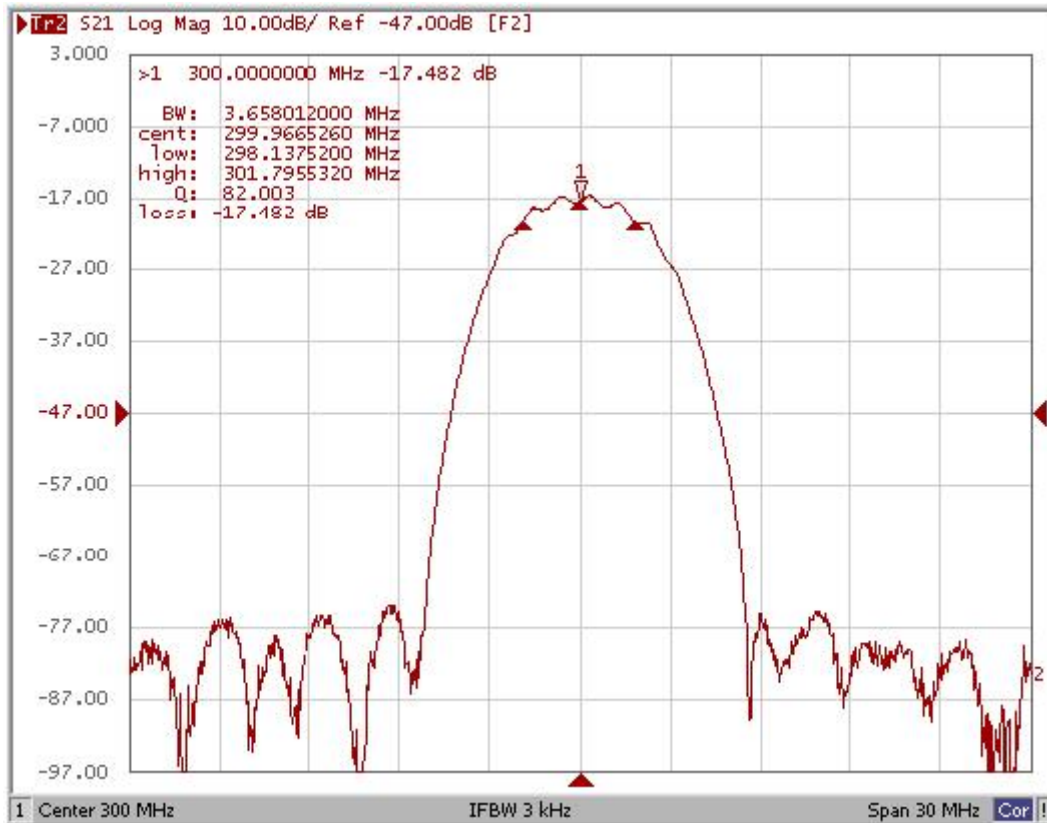


TEST FIXTURE AND VALUES/SOURCE AND LOAD IMPEDANCE 50 ohm

INPUT: L1: 55 nH; C1: 23 pF

OUTPUT: L2: 54 nH; C2: 23.3 pF

FREQUENCY RESPONSE



Oscilent Corporation - CALL **949.252.0522**

Part No.: 813-SL300.0M-02

18195 East McDermott Street, Building D, Irvine, CA 92614, USA
 Fax: 949.252.0599, E-Mail: Sales@Oscilent.com