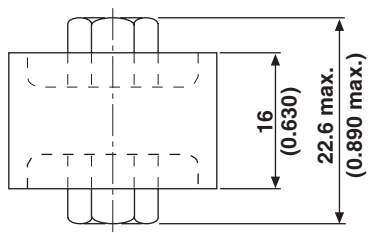
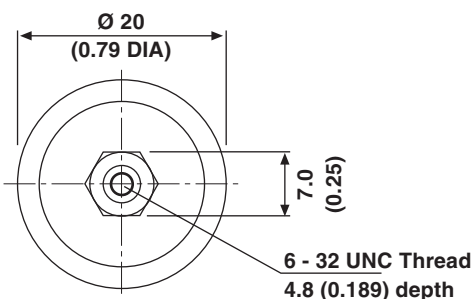
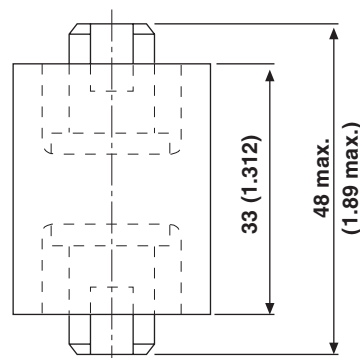
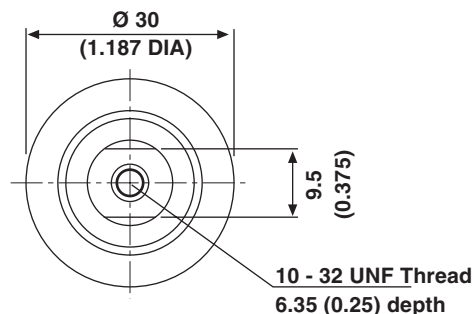


Barrel-Style Capacitors - Class 1 and 2 Ceramic

TOS 020016 7.5 KV_{DC}



TOS 030033 15 KV_{DC}



• Dimensions in millimeters (inches)

MATERIAL:

Capacitor elements made from Class 1 or Class 2 ceramic dielectric with noble metal electrodes.
Connection Terminals: Copper/brass, silver plated.

FINISH:

Noble metal electrodes and insulating rim completely lacquered.

MARKING:

Type designator, Capacitance value and tolerance, Rated voltage, Production date code, Ceramic material code, DRALORIC Logo.

INSTALLATION GUIDELINES:

We recommend the use of a wrench when tightening and fastening screws.

ORDERING INFORMATION				
TOS 030030	15 KV _{DC}	1500 pF	± 20 %	R 2000
MODEL	RATED VOLTAGE	CAPACITANCE VALUE	TOLERANCE	CERAMIC



TOS 020016								
CERAMIC	CAPACITANCE VALUE [pF]	RATED VOLTAGE [KV _{DC}]	RATED POWER* [KVA _r]			RATED CURRENT [A _{RMS}]		
			1 MHz	10 MHz	30 MHz	1 MHz	10 MHz	30 MHz
NP 0	10	7.5	1.7	10	10	0.3	2.5	4.3
	15		3.2	10	10	0.6	3.1	5.3
	25		4.4	10	10	0.8	4.0	6.9
	30		5.3	10	10	1.0	4.4	7.5
	40		7.0	10	10	1.3	5.1	8.7
N 750	50		8.8	10	10	1.7	5.6	9.7
	75		10	10	7.0	2.2	6.9	10
N 5600	100		10	10	5.3	2.5	7.9	10
	150		5.0	5.0	3.5	2.2	6.9	10
	200		5.0	5.0	2.7	2.5	7.9	10
R 700	300		5.0	5.0	1.8	3.1	9.7	10
	400		0.4	0.4	0.4	1.0	3.2	5.5
R 1400	500		0.4	0.4	0.4	1.1	3.6	6.1
	600		0.4	0.4	0.4	1.2	3.9	6.7
R 2000	800		0.4	0.4	0.4	1.4	4.5	7.8
	1000		0.2	0.2	0.2	1.1	3.6	6.1
R 4000	1500		0.2	0.2	0.2	1.4	4.3	7.5
	2000		0.2	0.2	0.2	1.6	5.0	8.7
	2500		0.2	0.2	0.2	1.8	5.6	9.7

CAPACITANCE TOLERANCES:

NP0, N 750, N 5600: ± 10 %
 R 700, R 1400, R 2000, R 4000: ± 20 %
 Other capacitance values are available on request.

TOS 030033								
CERAMIC	CAPACITANCE VALUE [pF]	RATED VOLTAGE [KV _{DC}]	RATED POWER* [KVA _r]			RATED CURRENT [A _{RMS}]		
			1 MHz	10 MHz	30 MHz	1 MHz	10 MHz	30 MHz
NP 0	10	15	7	35	35	0.7	4.7	8.1
	25		18	35	35	1.7	7.4	13
	50		35	35	35	3.3	11	18
N 750	75		35	35	35	4.1	13	22
	100		35	35	35	4.7	15	26
	150		22	22	22	4.6	14	25
N 3300	200		15	15	15	4.3	14	24
	300		5	5	5	3.1	10	17
	400		5	5	5	3.6	11	19
	500		5	5	5	4.0	13	22
R 2000	750		0.5	0.5	0.5	1.5	5.0	8.4
	1000		0.5	0.5	0.5	1.8	6.0	9.7
	1200		0.5	0.5	0.5	2.0	6.0	12
	1500		0.5	0.5	0.5	2.2	6.0	12

CAPACITANCE TOLERANCES:

NP0, N 750, N 3300: ± 10 %
 R 2000: ± 20 %
 Other capacitance values as well as metric threads are available on request.

* The surface temperature of 100 °C must not be exceeded



Disclaimer

All product specifications and data are subject to change without notice.

Vishay Intertechnology, Inc., its affiliates, agents, and employees, and all persons acting on its or their behalf (collectively, "Vishay"), disclaim any and all liability for any errors, inaccuracies or incompleteness contained herein or in any other disclosure relating to any product.

Vishay disclaims any and all liability arising out of the use or application of any product described herein or of any information provided herein to the maximum extent permitted by law. The product specifications do not expand or otherwise modify Vishay's terms and conditions of purchase, including but not limited to the warranty expressed therein, which apply to these products.

No license, express or implied, by estoppel or otherwise, to any intellectual property rights is granted by this document or by any conduct of Vishay.

The products shown herein are not designed for use in medical, life-saving, or life-sustaining applications unless otherwise expressly indicated. Customers using or selling Vishay products not expressly indicated for use in such applications do so entirely at their own risk and agree to fully indemnify Vishay for any damages arising or resulting from such use or sale. Please contact authorized Vishay personnel to obtain written terms and conditions regarding products designed for such applications.

Product names and markings noted herein may be trademarks of their respective owners.