



## PL00291 Series SMD LED Right Angle 1104 Package

### Features

- \*Oval Lens Side View Package 3.0 x 2.0 x 1.0mm
- \*AlGaInP Ultra Bright Amber Chip used
- \*Low Current Requirements
- \*High Light Output
- \*Compatible with IR Solder-Process
- \*Industry Standard Footprint
- \*2000 or 1000 pcs per Reel
- \*RoHS Compliant

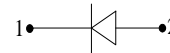
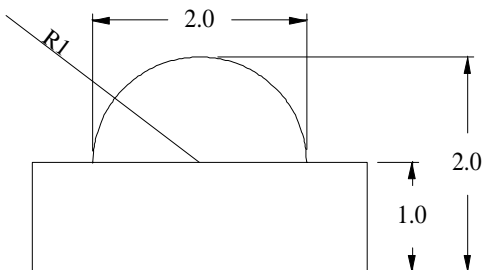
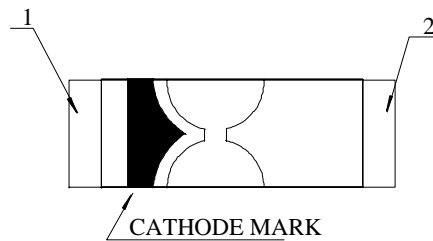
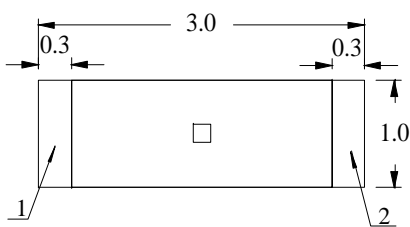
### Absolute Maximum Ratings at $T_A = 25^\circ\text{C}$

Power Dissipation .....	72mW
Reverse Voltage (<100 $\mu$ A) .....	5.0V
Max Forward Current .....	30mA
Peak Forward Current(1/10 Duty Cycle, 0.1ms Pulse Width) .....	100mA
Operating Temperature Range .....	-40°C to +85°C
Storage Temperature Range .....	-40°C to +85°C
Reflow Soldering Temperature.....	260°C for 10 seconds

### Electrical & Optical Characteristics at $T_A = 25^\circ\text{C}$

Part Number	Emitting Color	Chip Material	Peak Wave Length	Dominant Wave Length	Viewing Angle 2 $\theta$ 1/2	Forward Voltage @20mA (V)		Luminous Intensity @20mA (mcd)	
						Typ	Max	Min	Typ
Water Clear Lens			nm	nm	Deg				
PL00291-WCA03	Amber	AlGaInP	618	610	120°	2.0	2.4	35.0	70.0

Package Dimensions are in **Millimeters**. Tolerance is  $\pm 0.25\text{mm}$  unless otherwise specified.



### Recommended Soldering Pad Layout

