

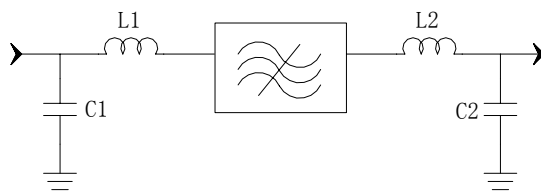
Specifications

Parameter	Unit	Minimum	Typical	Maximum
Center Frequency	MHz		240	
Insertion Loss	dB		15.1	16
1 dB Bandwidth	MHz	30	32.15	
3 dB Bandwidth	MHz		34.34	
40 dB Bandwidth	MHz		44.54	65
Passband Variation	dB		0.9	2
Ultimate Rejection($f_0 \pm 35\text{MHz}$)	dB	35	38	
Group Delay Variation	nsec		60	
Substrate Material			YZ	
Ambient Temperature	°C		25	
Package Size		SMD0705A (7x5x1.6mm ³)		

Notes:

1. All specifications are based on the test circuit shown
2. In production, devices will be tested at room temperature to a guardbanded specification to ensure electrical compliance over temperature
3. Electrical margin has been built into the design to account for the variations due to temperature drift and manufacturing tolerances
4. This is the optimum impedance in order to achieve the performance show

Matching Configuration



$$L1 = 27 + 27\text{nH} \quad L2 = 22 + 18\text{nH}$$

$$C1 = 15\text{pF} \quad C2 = 18\text{pF}$$

Source/Load Impedance=50 ohm

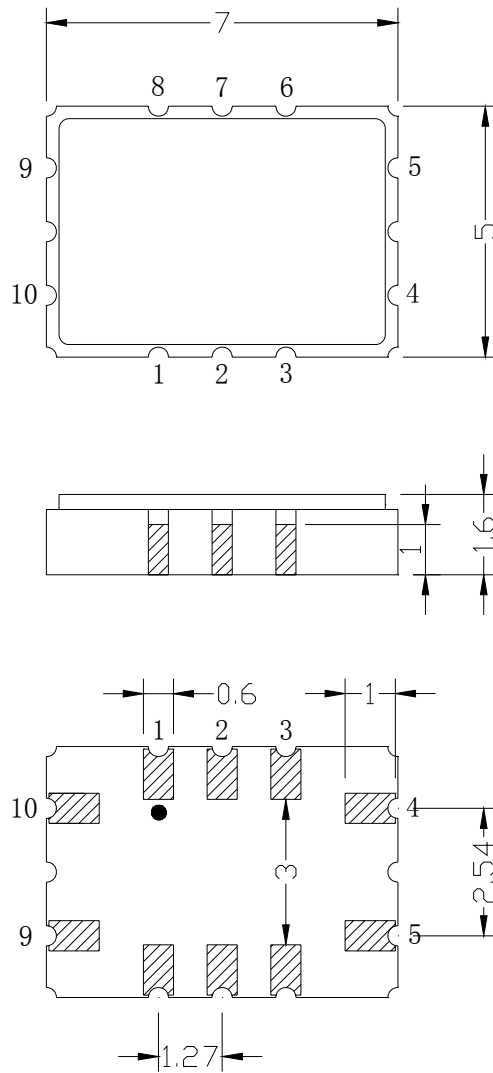
Notes - Component values may change depending on board layout.



SIPAT Co., Ltd.
(CETC No. 26 Research Institute)
Nanping Huayuan Road No. 14
Chongqing, China, 400060

Part Number	LB240DS01	
Rev. Date	2005-6-27	
Rev.	4.0	Page 1/3

Package Dimension



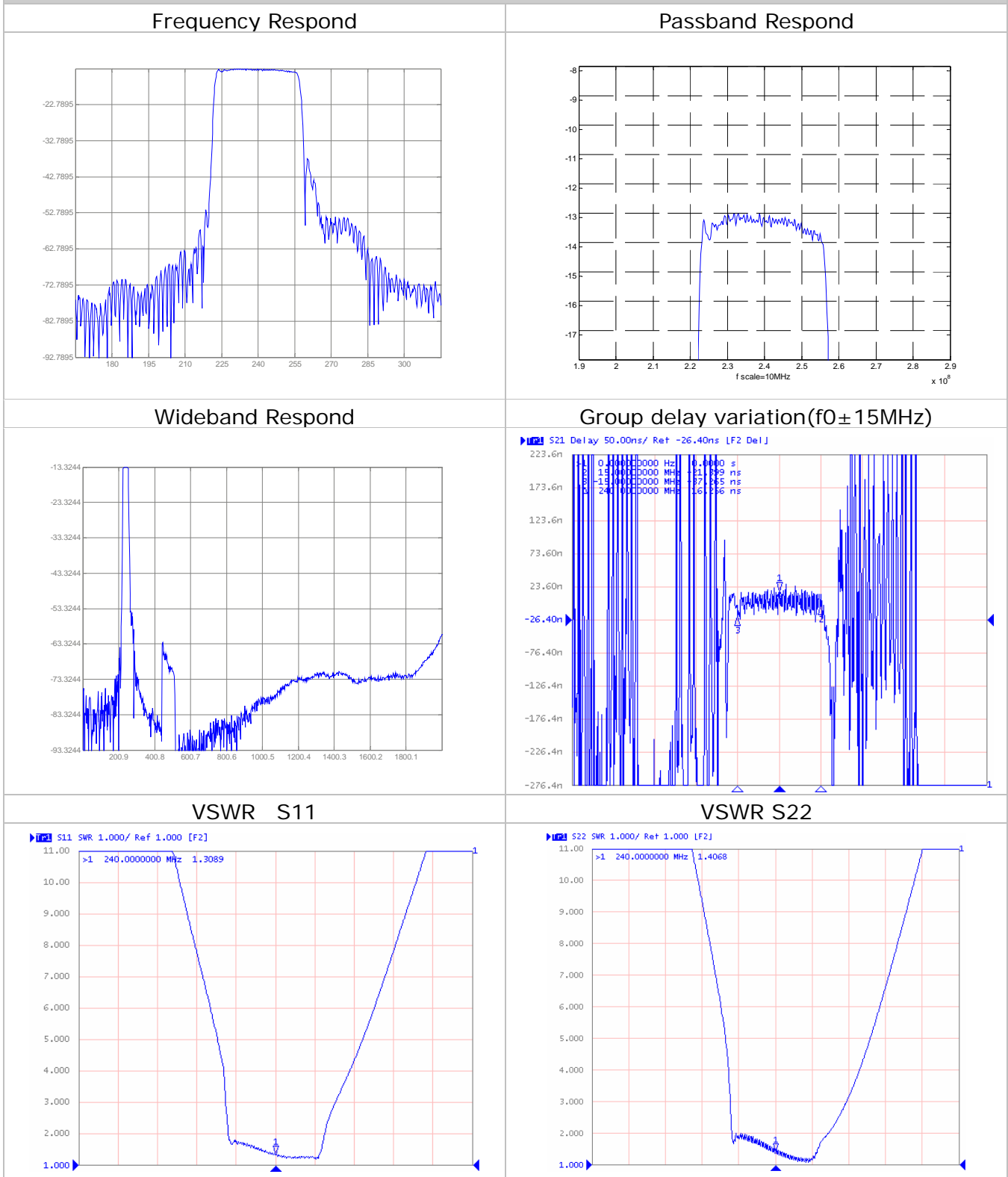
Input:9
Output:4



SIPAT Co., Ltd.
(CETC No. 26 Research Institute)
Nanping Huayuan Road No. 14
Chongqing, China, 400060

Part Number	LB240DS01	
Rev. Date	2005-6-27	
Rev.	4.0	Page 2/3

Typical Performance



SIPAT Co., Ltd.
(CETC No. 26 Research Institute)
Nanping Huayuan Road No. 14
Chongqing, China, 400060

Part Number	LB240DS01	
Rev. Date	2005-6-27	
Rev.	4.0	Page 3/3